



**Singapore
Association for
Counselling**

FOR COUNSELLING
AND PSYCHOTHERAPY



2
0
2
5

ANNUAL
REPORT

Table of Contents

About SAC	1
President's Message	5
2024 - 2026 Executive Committee	9
Report of the Executive Committee 2025	14
Membership Strength	24
Acknowledgement	28
Membership Listing as at 31 December 2025	30
Contact Information	49

ABOUT SAC

VISION

To be a professional body representing the interests of counsellors and psychotherapist in Singapore, including generating knowledge sharing and establishing best practice standards, to generate continued growth of the profession to meet the interests of clients.

MISSION

- To protect the interest of clients, the community and the profession by maintaining standards of counsellor training and practice, including establishing standards of supervision.
 - To involve individuals, groups and stakeholders with interest in the field of counselling through dialogue and activities.
 - To be the accreditation body for counselling professions and practitioners in Singapore.
-

VALUES

- Professionalism:** We commit to the development of competencies.
- Respect:** We believe in human dignity and choice.
- Integrity:** We practise honest communication and engagement.
- Diversity:** We embrace multiculturalism.
- Ethics:** We uphold the standards expressed within our code of ethics.



MILESTONES

1982

FOUNDING OF SAC

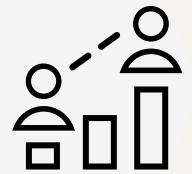
Singapore Association for Counselling (SAC) was pioneered by Mr Anthony Yeo & a group of counsellors.



1996 TO
1999

PROFESSIONAL STANDARDS INITIATIVE

SAC developed a proposal on standards for the recognition and licensing of professional counsellors in Singapore.



1999

ETHICS AND MEMBERSHIP STANDARDS

Training standards for membership were introduced and SAC adopted its first Code of Ethics.



2000

COURSE ACCREDITATION

Guidelines established for the accreditation of counsellor training courses in Singapore.



2003

REGISTER OF COUNSELLORS ESTABLISHED

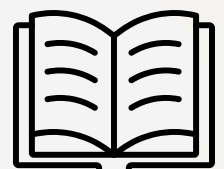
The SAC Register of Counsellors was launched and the first SAC website introduced.



2005

COURSE RECOGNITION FRAMEWORK

Launch of the first Course Recognition Manual for counselling training programmes.



MILESTONES

2013

MEMBERSHIP AND GOVERNANCE REVIEW

New membership categories were introduced and the SAC Constitution underwent a major review.



2015

INAUGURAL SAC SYMPOSIUM AND ETHICS FRAMEWORK

SAC became a full member of NCSS and launched the Ethics Manual of Procedures at its inaugural symposium, officiated by Dr Amy Khor



2016

CLINICAL SUPERVISION FRAMEWORK

The SAC Register of Clinical Supervisors was established.



2017

SAC BRAND AND DIGITAL TRANSFORMATION

The new SAC logo, website and member portal were launched during the 35th Anniversary Conference.



2019

ESTABLISHMENT OF SECRETARIAT OFFICE

SAC established its own Secretariat office, employing staff and engaging external accounting services.



2020

MEMBERSHIP MILESTONE

SAC membership surpassed 1,000 members.



MILESTONES

2021

INTERNATIONAL COLLABORATION

MOU signed with the Hong Kong Professional Counselling Association.



2022

40TH ANNIVERSARY AND ACADEMIC MILESTONE

SAC celebrated its 40th Anniversary and launched Singapore's first academic counselling journal.



2023

ASEAN REGIONAL NETWORK

Six (6) ASEAN counselling associations signed an MOU to establish a regional counselling network.



2024

MEMBERSHIP GROWTH AND SECTOR LEADERSHIP

Membership exceeded 2,000 members and an MOU was signed with ATAS, APTS and AMFTS for multidisciplinary collaboration. SAC supported sector development including the Counselling Track under the Skills Framework for Social Service (est. 2023).



2025

SECRETARIAT EXPANSION & HEART ASSOCIATES ONBOARDING

New Secretariat office and SAC HEART Associates initiative launched to support national mental health crisis response.



PRESIDENT'S MESSAGE

The 28th Executive Committee of the Singapore Association for Counselling (SAC) is pleased to present the Annual Report for 2025. This past year has been a poignant reminder that progress in our profession is never accidental – it is built through commitment, shared purpose, and the continuity of a team that believes deeply in the work we do.

I am pleased to report that our membership remains on a growing trend. As of 31 December 2025, our total membership stood at 2,293! This trend was similarly noted for our registered practitioners – Registered Counsellors grew by 19% to 828 (2024: 693) and Registered Clinical Supervisors, by 7% to 169 (2024: 158). Financially, SAC ended the year with a surplus of \$96,069 and total funds increased by 13% to \$853,314 (2024: \$757,245).

Across 2025, SAC stood at the intersection of rapid societal change and rising expectations of mental health care. Yet amid this evolving landscape, one truth remained constant: the counselling profession continues to be a vital anchor of hope and resilience for individuals, families, and communities. Our collective efforts this year reflect not only what we have achieved, but what we are becoming – a stronger, more connected, and more future-ready fraternity, some of which were expounded through the various events:

- **Counsellors' Education Board Tea Session with Institutions** (11 April 2025), where leaders from SAC-recognised programmes gathered to discuss emerging trends and challenges in counselling education. Such conversations strengthen the pipeline of future practitioners and ensure that our standards remain robust and relevant.
- **Legal Essentials for Private Practice** (26 June 2025) equipped practitioners with critical legal knowledge, bridging professional practice with legal literacy.
- **Am I Competent Enough as a Counsellor** (22 July 2025) by the Community Counsellors Sub-Committee.
- **New Members' Orientation** (2 August 2025) welcomed almost 40 new members into a profession that is rapidly transforming, with the session aptly themed "Counselling in the Age of AI: Bridging Bytes & Bonds". Their enthusiasm and curiosity remind us that the future of counselling will be shaped by those who can integrate timeless human connection with emerging technologies.
- **Discover Community Mental Health** (30 September 2025), co-organised with the Agency for Integrated Care (AIC), highlighted the importance of community-based mental health support and the role of counselling professionals in this domain of national attention.

PRESIDENT'S MESSAGE

Beyond strengthening our foundations as an association, SAC continues to play a pivotal role in deepening professional excellence at the wider sector, through our contributions to the Ministry of Social & Family Development (MSF)'s sectoral initiatives – including the Family Services Landscape Review, Code of Practice for FAM@FSC Counsellors¹, and the SkillsFuture Tripartite Taskforce Counselling Sub-Team. The Inaugural Counsellors' Network Session on 9 May 2025, attended by over 250 professionals, was a landmark moment in fostering sector-wide collaboration.

Our involvement in the HEART Network², including the launch together with the Ministry of Home Affairs (MHA), Singapore Association of Social Workers (SASW), Singapore Psychiatric Association (SPA) and Singapore Psychological Society (SPS) on 16 July 2025 and the SPS–SAC HEART Associates Onboarding Ceremony on 17 November 2025, reinforced SAC's role in supporting Singapore's crisis readiness and psychological resilience.

A significant milestone this year was the launch of Volume 2 of the Counselling & Psychotherapy Review Singapore (CPRS)³ on 12 November 2025. The journal continues to deepen local scholarship and provide a platform for practitioners, researchers, and students to contribute to the growing body of knowledge in Singapore's mental health field.

SAC also contributed to public discourse through media engagements, including the Straits Times article on 27 February 2025 addressing concerns about unqualified online counselling services.

Our regional engagements in 2025 reflected SAC's growing role as a trusted partner in Asia's mental health landscape. We hosted delegations from the Pacifica Congress (1 April 2025), the Guidance Psychology Association of Thailand (10 April 2025) and the Universitas Pendidikan Indonesia (21 August 2025) as part of their regional research study on mental health in education. These exchanges deepened cross-cultural understanding and opened new pathways for collaboration.

These partnerships are possible because of the continuity of SAC's leadership and the relationships nurtured over time. In a region where trust is built through consistency and presence, our sustained engagement has positioned SAC as a valued and reliable collaborator.



The HEART Network² was launched on July 16 by Senior Minister of State for Home Affairs Sim Ann (centre) at the Asian Conference on Criminal and Operations Psychology

PRESIDENT'S MESSAGE

As we look toward the future, we do so with a renewed sense of purpose. The challenges ahead – technological disruption, rising mental health needs, and an increasingly complex social landscape – require not only skill, but unity. They require a team that understands where we have come from, and is committed to where we must go.

The continuity of SAC's leadership and volunteers is not merely organisational – it is strategic. It ensures that our national, sectoral, and regional engagements remain strong, credible, and forward-moving. It allows us to build on long-standing relationships, sustain momentum across multi-year initiatives, and advocate with clarity and confidence.

On behalf of all members, I extend my deepest appreciation to the Chairpersons and member-volunteers of all Boards, and Sub-Committees. My heartfelt thanks to my Vice Presidents – Ms Jenny Giam and Ms Hema Gurnani – and to the 28th Executive Committee for their unwavering dedication. I also wish to acknowledge our Honorary Legal Advisor, Ms Angelina Hing, our secretariat team, Ms Stephanie Chin, Ms Sandra Lim and Mr Sebastian Li, and our finance partners from Genesis Consulting & Solutions, Ms Sarah Phua and Ms Lee Pei Yee.

To all members, thank you for your trust, partnership, and belief in SAC's mission. Our progress is only possible because you choose to journey with us. Together, let us continue to build a profession that uplifts lives, strengthens communities, and shapes a more compassionate Singapore.

MR ANDY LAM
PRESIDENT
28TH EXECUTIVE COMMITTEE
SINGAPORE ASSOCIATION FOR COUNSELLING

- 1 - https://sacsingapore.org/wp-content/uploads/Practice-Guidelines-for-FAM-Counsellors_FINAL.pdf
- 2 - <https://www.straitstimes.com/singapore/courts-crime/new-network-links-home-team-psychologists-mental-health-bodies-to-boost-emergency-response>
- 3 - <https://sacsingapore.org/counselling-psychotherapy-review-singapore/>

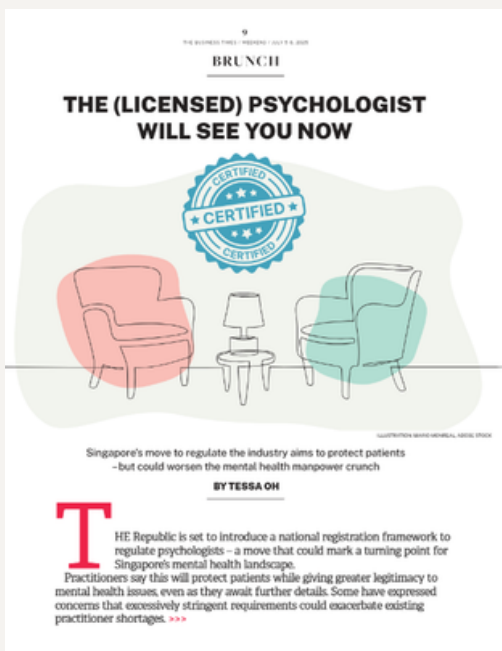
SAC IN THE NEWS

Advancing Public Awareness and Professional Standards in Mental Health



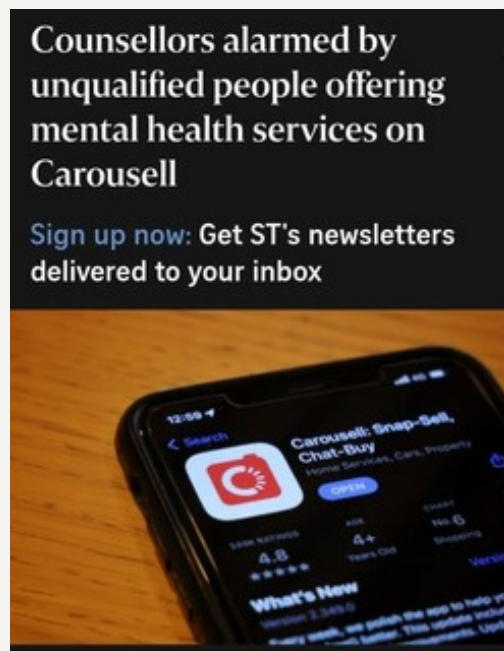
The Straits Times | 17 Jul 2025

SAC President Andy Lam participated in the launch of the HEART Professionals Network, strengthening collaboration for crisis response in Singapore.



The Business Times | 5 Jul 2025

SAC highlighted the importance of professional standards in the evolving mental health sector.



The Straits Times | 25 Feb 2025

Concerns raised about unqualified individuals offering counselling services online.

Executive Committee 2025



President

Mr Andy Lam, BSc GDip(SW) MSocSc (Counselling) RegCLR RegClinSup RSW MMSAC

Andy is currently the Executive Director of Viriya Community Services, a social service organisation, and has been in practice for close to 20 years. His areas of interest include the provision of casework services and clinical supervision, improving standards of practice through practice evaluation, and training and organisational development. Andy was previously a Senior Court Family Specialist with the Family Justice Courts, focusing on family dispute resolution work, extending from his strong belief in systemic principles. Andy has served in various capacities with the Singapore Association for Counselling in the last 15 years. He was the Chairperson of the Community Counsellors Sub-Committee, Counsellors' Education Board, Honorary Secretary, Vice-President and most recently, President. Within the sector, Andy serves as a Member of the AIC's Community Care Manpower Development Award Selection Committee, a Judge for the NCSS' Sector Awards for Social Service Professionals, and a Member of MOH's Advisory Panel for Mental Health and Well-Being.

1st Vice President

Ms Giam Xiuhui Jenny, MSocSc (Counselling) RegCLR RegClinSup RSSP MMSAC PCC

Jenny Giam has over a decade of experience supporting individuals and families across diverse counselling and clinical settings. Through her varied roles, she has developed strong counselling and case management skills. She has served on various boards under the Singapore Association for Counselling. In addition, she serves as an Auxiliary Counsellor with the Singapore Armed Forces Volunteer Corps and as a Victim Care Officer with the Singapore Police Force.



2nd Vice President

**Ms Hema Gurnani, MA(Counselling) PGDip (Edu) Dip (Child Psy)
MMSAC RegCLR RegClinSup RSSP**

Hema is the Co-founder and Director for AppleTree Counselling Pte Ltd. Prior to this; she was the Head of a Social Service Agency for eleven (11) years. Equipped with more than two (2) decades of clinical experience, she has extensive experience working with the local and expatriate community, and she continues to work with children, youths, and their families. As a systemic family therapist, she is skilled in working with a variety of family and couple related issues, and she is passionate in supporting divorce and divorcing families, single parents, and their children. She is a practicing clinical supervisor, an educator, and a lecturer, with her passion residing in grooming interns and supporting community practitioners and MOE counsellors. She had served the Singapore Association for Counselling (SAC) as Honorary Secretary, in the Community Counsellor Sub-Committee, Counsellors' Education Board, Register of Counsellors Board, and she is currently serving as the 2nd Vice President.



Executive Committee 2025

Honorary Secretary

Ms Au Hoi Ting, BPsych(Hons) SDip (Couns) MCouns MSW RegCLR RSW CMSAC

Hoi Ting has more than a decade of experience in the social service sector. With a dual Masters in Counselling and Social Work, she is deeply committed to continuous learning and professional growth. Currently, Hoi Ting's focus lies in the provision of family counselling and divorce support, alongside her role in supervision work. Utilising experiential approaches, she strives to enrich her practice with individuals and multi-stressed families. Her dedication to enhancing her skills leads her to pursue training in psychodrama, further enriching her therapeutic toolkit. In addition to Hoi Ting's professional endeavors, she has been actively involved in various capacities within SAC, serving on Boards and Sub-Committees since 2016. Furthermore, she is passionate about contributing to the well-being of children and youths, dedicating her time to volunteer work with non-profit organisations. Currently, she has the privilege of serving as a Victim Care Officer with the Singapore Police Force.



Assistant Honorary Secretary

Ms Loh Bee Chin Cindy, BSc(Psych) MSocSc(Counselling) RegCLR RegClinSup MMSAC

Cindy has been in counselling practice since 2009, journeying with distressed couples and families through life's complex transitions. She holds a degree in Psychology from the UK Open University and a Master of Counselling from the University of South Australia. As a Certified Emotionally Focused Therapist (ICEEFT, Asia-EFT), she brings a relationship-focused lens to her clinical work.



Honorary Treasurer

Ms Xiao Li En, MCouns RegCLR RegClinSup CMSAC CCTP-II

Ms Xiao Li En is a Clinical Member and Registered Counsellor, as well as a Registered Clinical Supervisor, with the Singapore Association for Counselling (SAC).

She holds a Master of Counselling from Monash University, where she also completed a degree majoring in Psychology and Sociology. In addition, she possesses a Diploma in Special Needs from the National Institute of Education and a Diploma in Dyslexia Studies from the Dyslexia Association of Singapore.

With 18 years of professional experience across the social service, education and healthcare sectors, Ms Xiao has served as a practitioner, mentor and supervisor. She has worked with individuals across the lifespan facing a broad range of challenges, including family conflict, academic stress, mental health concerns, special educational needs, trauma, financial difficulties and blood cancer. Ms Xiao currently serves as Assistant Director (Lead Counsellor) at the University Counselling Centre, Nanyang Technological University.



Executive Committee 2025



Assistant Honorary Treasurer

Dr Anthony Wong, PhD (Trauma & Crisis Counselling) MA(Counselling & Guidance) PGCert(Clinical Supervision) RegCLR RegClinSup MMSAC

Dr. Anthony Wong is a Basic Instructor with the William Glasser Institute (WGI), a Master Clinical Member and Supervisor with the Singapore Association for Counselling (SAC), and an APSAC Certified Substance Abuse Counsellor. Dr Wong is formally trained in CBT, IPT, EMDR, and Narrative Therapy, and provides supervision to counselling professionals across modalities. He specializes in trauma-informed care, suicide intervention, addiction recovery, and transformational counselling. Dr Anthony is also the developer of the ISN model—Integrative Somatic Narrative (Self-Navigation)—a clinical approach designed to aid in the processing of complex trauma and mental health issues. Inspired by Choice Theory and Reality Therapy, and drawing from somatic processing and narrative integration, ISN emerged from the limitations of single-modality therapies in addressing the fragmented, multilayered impact of chronic trauma. This model helps individuals reclaim safety, meaning, and choice across mind, body, and emotion.

Committee Member

Mr Sam Roberts, PGDip(Counselling) MAC RegCLR CMSAC

Mr Sam Roberts is the Founder and Director of Olive Branch Psychology and Counselling Services, a family-centred counselling clinic. With a background in regional HR management grounded in leadership and counselling, he brings a versatile skill set and a strong understanding of human dynamics. He leads a dynamic team providing tailored psychological and counselling support to a diverse clientele in a multigenerational and multicultural setting, including expatriates across children, teenagers, adults, couples, and seniors.

A keen learner and currently pursuing a doctorate in psychology, Sam is deeply focused on the science of the brain and applied neuroscience in real-world mental health and relationship challenges. His research explores how childhood attachment shapes adult neurobiology, influencing emotional regulation, perceived safety, and relational responses—insights he applies to strengthen assessment and intervention, while also developing preventive programs that promote mental health safety and resilience.



Committee Member

Ms Ruth Chua, BA(Social Work & Sociology) MSc(Family & Systemic Psychotherapy) RegCLR RegClinSup MMSAC

Ruth Chua obtained her first degree in Social Work (NUS) and subsequently completed her Masters in Family and Systemic Psychotherapy with Middlesex University (London). She spent 25 years in Counselling and Care Centre working as a Psychotherapist and continued as the Executive Director from Year 2013 till July 2022. She is currently working part-time as a family therapist at KKH and a Clinical Consultant and Trainer for various Social Service agencies.



Executive Committee 2025

Committee Member

Ms Denise Yap, BA(Psych) MSocSc(Counselling) RegCLR RegClinSup CMSAC



Denise holds a Masters in Counselling (Swinburne University), a Bachelors degree in Psychology (National University of Singapore), and a Post Graduate Certificate in Clinical Supervision (Swinburne University). She has been practising counselling for over a decade and focuses mainly on the work with youths and their parents across the educational and social service settings. Besides counselling and supervision, Denise has experience as a trainer and has held managerial positions in the social service setting. She is currently working at Limitless as a senior counsellor leading the CREST-Y team.

Committee Member

Ms Carolyn Lim, MCouns MSW RegCLR RSW CMSAC

Carolyn Lim is currently a counsellor at Care Corner Counselling Centre. She is also a certified team lead in Therapeutic Spiral Model (TSM) supporting people in both experiential personal and group therapy in Trauma and Mental Health for over a decade enhancing people's lives. She runs monthly personal and group supervision. Previously, she worked with Association of Women for Action and Research (AWARE) and AWWA Family Service Centre.



Co-Opted Committee Member

Mrs Lydia Cheng-Ern Lim, MSocSc Couns. BA Psych. PEAKS CertMT CMACCS CMSAC RegCLR



Lydia Lim (Chang) has over 25 years of working with people across all ages as a Developmental Therapist, PEAKS Psychologist and Management Consultant. Lydia's passion for integrating mental wellness in life, relationships, families & organisations has led to over 20 years of rigorous practice with cutting-edge psychometric profiling, coaching & training across corporate industries, educational institutions and broad development domains - personal & professional. Her clinical practice include: developmental interventions; marriage and family psychotherapy; parenting coaching; counsellor clinical training & supervision. Her corporate expertise include: HR profiling; career coaching; people development; synergistic team deployment & development; strategic leadership development; succession planning; research & data-mining for organisations and communities. Over the years since 2005, Lydia has served on the Singapore Association for Counselling's EXCO across more than 3 terms and is still actively serving on the EXCO today. As a certified PEAKS Master Trainer, People Analytics Consultant and a Co-Founder & Chief Psychologist of [GetConnected.SG](https://www.getconnected.sg), Lydia is a strong advocate for building stronger marriages, families and communities. Blissfully married for over 20 years to Charis Lim, they believe in "walking the talk" with each other and their two (2) teenagers.

Executive Committee 2025



Co-Opted Committee Member, Immediate Past President

A/P Frederick Low, DProfSt RegCLR RegClinSup CPsychol AFBPsS MMSAC

A/Prof Frederick Low is a counselling practitioner and educator with over 35 years of experience in the social service and education sectors in Singapore. He has held clinical leadership and management roles in social service agencies, including previously serving as Executive Director of Children's Aid Society.

He is currently an Associate Professor of Counselling at James Cook University and continues to maintain a small but active private practice.

Frederick has served the Association in multiple capacities since 2010. He is currently the Immediate Past President, Co-Chair of the Research & Publications Committee, and a member of the Private Practitioners' Sub-Committee and the Nomination Committee. He has also previously served as Chair of the School & College Counsellors Sub-committee, Chair of the Register of Counsellors Board, and Chair of the Counsellors Education Board.

Beyond the Association, he has contributed to governmental expert panels on family life education and family counselling, and served on a university Advisory Board on student wellness. He also supports the work of Ministry-appointed Child Protection Specialist Centres as a member of multidisciplinary case review teams.

Frederick is a Registered Counsellor, Psychologist and Social Service Practitioner in Singapore, a Chartered Psychologist in the UK, and an Associate Fellow of the British Psychological Society.

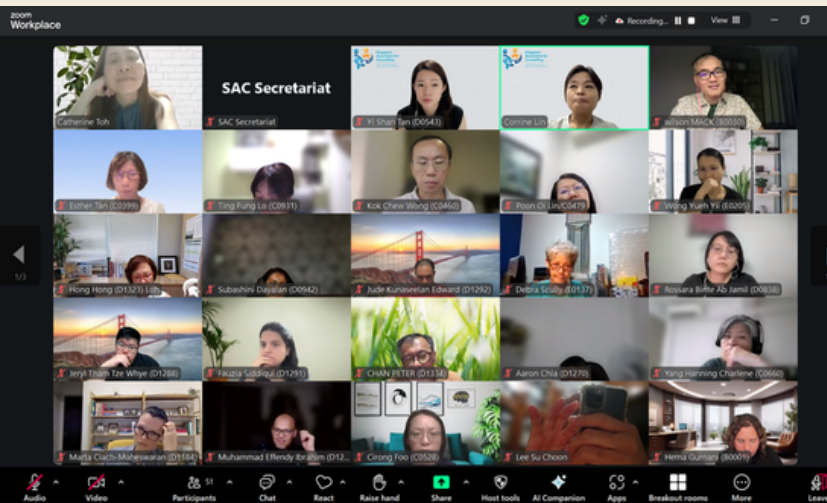


Community Counsellors Sub-Committee

- Co-Chairpersons:** Mr Wilson Mack
Mr Leow Hock Chuan John
- Members:** Ms Tan Yi Shan
Ms Lin Zee Ling Corrine
Ms Gan Sih Tar Michele (Stepped down 26 Nov 2025)
Ms Chan May Peng (Effective 17 Sep 2025)

On 22 July 2025, the Sub-Committee organised the virtual learning event "Am I Competent Enough as a Counsellor – A Longitudinal SG Study" sharing on "Hindering Self-Awareness" (HSA) and the perceived influence on trainee counsellors' self-efficacy and supervisory working alliance, which created space for reflection on practice and self-care. Post-event feedback indicated that 95.3% of participants gained new knowledge from the session.

Members are encouraged to look out for details of upcoming CCSC initiatives and events, which will be announced in due course.



Membership Sub-Committee

Co-Chairpersons:

Ms Abigail Catherine Yang Wenjie
Ms Lim Bee Bee Carolyn

Members:

Mr Abdul Hakim Bin Adzhari
Ms Atika Shukla
Ms Edmund Celine Vasantha
Ms Rachel Chan Wen Yeu
Mr Sam Roberts
Ms Smitha Venkatesh
Ms Tan Sook Khuan Helenna
Mr Toh Huat Peng Benjamin
Mr Desouza Karl Francis
Ms Thakore Chitragada (Effective 26 Nov 2025)

Mr Muhammad Danial bin Ahmad Sufyan
Ms Koh Yun Qing Irene
Mdm Anusha Balasingham
Mdm Tan Meow Lan Joyce
Mr Ian Ong
Ms Sunita Rai
Ms Loh Li Nah
Mr Lim Mou Nyee
Mr Chew Hock Meng



The SAC Membership Sub-Committee (MSC) supported three key events in 2025. During the year, new members were welcomed through the annual SAC New Members Orientation held at Care Corner Counselling Centre. The programme included breakout group discussions for private practitioners and community-based counsellors (e.g. FAMs, schools), centred on the theme "Bridging Bytes and Bonds: Counselling in the Age of AI."

Significant milestones for new MSC members included volunteer opportunities in registration and logistics support at the SAC Annual General Meeting (AGM) 2025, as well as participation in the Community Outreach Event.

The year concluded with the MSC Retreat 2025, which served to recognise and appreciate members for their dedicated and selfless contributions across various roles.



Private Practitioners' Sub-Committee

- Co-Chairpersons:** Ms Hema Gurnani
Ms Jean Tay
- Members:** Mr Desouza Karl Francis
Dr Gloria Kong
A/Prof Frederick Low
Mr Winston Tay
Ms Sophia Goh (Effective 26 Nov 2025)

SAC started as an initiative under the banner of Private Practitioners Networking Group (PPNW) to study and address the increasing number of private practitioners post Covid-19. The first PPNW team consisted of veteran private practitioners. The focus is:

- To engage and support the SAC registered private practitioners.
- To facilitate discussions to keep abreast on the Best Practices and trends relevant to the private practitioners.
- To conduct Events/Focus Group Discussions (FGD) that will benefit the SAC-registered private practitioners and other SAC members.



In the term 2022-2024: The first PPNW meeting was on 3 August 2022 and during the term, a 'Needs Analysis Survey' was administered to SAC members and 247 participants responded. A notable finding is that young and fresh graduates of SAC-accredited Counselling programme were starting their own practice or joining online private practice platforms. With this post Covid-19 new norm, the need to support private practitioners became essential.

In the term 2024-2026: The first PPNW event, held on 30 July 2024, was a Hi-Tea for private practitioners to meet & greet. Additionally, SAC President, Mr Andy Lam, addressed the ethical issues related to the private practice, A/Prof Frederick Low addressed how private practitioners could represent themselves professionally, and Mr Karl DeSouza showed how private practitioners can publicise their private practice on the SAC website.

The second event, 'Legal Essentials for Private Practice', was held on 26 June 2025 at Singapore Polytechnic. Mr Joel Lim Jian Wei, Deputy Course Chair and Law Lecturer at Singapore Polytechnic, with his panel, addressed the "Legal Concerns Related to the Private Practice of Counsellors/Psychotherapists".

On 30 July 2025, the SAC EXCO officially declared that the PPNW be established as an official Sub-Committee (PPSC). The current team plans to organise knowledge-based learning and networking opportunities that are relevant for private practitioners and SAC members.

Research and Publication Sub-Committee

- Co-Chairpersons:** A/Prof Frederick Low
Dr Lee Boon Ooi
- Members:** Dr Bibi Jan Binte Mohamed Ayyub
Dr Chan Pei See Joyce
Dr Fan Kam Tong Gilbert
Dr Kok Jin Kuan
Dr Ng Da Xuan
Dr Pon Kwai Ling Alicia
Dr Saravanakannan Ganapathi
Dr Toh Mui Hua, Catherine
Dr Muhammad Hafiz Bin Zainal Abidin

The year under review saw the continuation of the work in growing our journal – Counselling & Psychotherapy Review Singapore. While online access was facilitated to all members to the journal, we also carried the Association's initiative to send printed copies of the inaugural issue to all members. We ordered a reprint as more new members joined during the year under review. In total, we reached a circulation of over 2020 copies by the end of the December.

At the same time, the call for papers went out for the second issue. We are pleased to report that we received good interest and a healthy number of submissions. We look forward to another fruitful year of disseminating local research and practice wisdom among our members and joining others in the global discourse in the field of counselling.

We must thank fellow members of this Sub-Committee who also double up as members of the Editorial Board for the Journal. In the same breath, we thank reviewers who helped ensure standards and quality of this nascent publication.



School & College Counsellors Sub-Committee

- Co-Chairpersons:** Mr Jeffrey Lee Chung Yean (Took over 30 Jul 2025)
Mr Mohammed Zullkarnain Bin Abdul Aziz (Took over 30 Jul 2025)
- Members:** Ms Duraipandi, Angeline Jayanthi (Effective 28 May 2025)
Ms Esendemir Sekhon Berna (Stepped down 30 Jun 2025)
Mr Joshi s/o Chandrasenan
Mr Leong Kok Kuan Tony
Ms Shamini Ras Ramachandran
Mr Teo Donovan
Ms Wong Zhi Xin, Charlene (Effective 28 May 2025)
Ms Xiao Li En (Stepped down 24 Sep 2025)
Ms Yap Mei Mei



The sub-committee experienced some initial challenges in appointing two (2) Co-Chairpersons during the early part of the term. Fortunately, by the end of July, both Mohammed Zullkarnain and Jeffrey Lee stepped forward to volunteer their services. They quickly initiated meetings to explore possible activities that would engage and benefit both sub-group members and the wider community.

Although initial plans were developed, the process of identifying suitable speakers, securing approvals, and coordinating logistics led to some delays.

Nevertheless, with the support of the sub-committee members, preparations are now well underway for at least one (1) community event aimed at supporting school counsellors.

The selected topic, "Managing School Refusal," addresses one of the key challenges currently faced in schools. Tony, a sub-committee member with extensive experience and relevant credentials, has been invited to speak at the event.

The session is tentatively scheduled for the second quarter of the year and is expected to draw approximately 100 to 150 participants.

Clinical Supervision Board

Co-Chairpersons:	Dr Jessica Leong-Chan Lai Cheng Mr Joachim Lee, PBM
Members:	Ms Koh Choo Choo Sharon (Mrs Sharon Sng) Ms Livingston Anna Catherine Mr Michael Gabriel Pillai Ms Reena Goenka Mr SB Viknesan

The Clinical Supervision Board received twenty five (25) applications for Registered Clinical Supervisor (RCS) status for the year 2025.

Total Applications: 25

- Approved: 24
- Rejected: 1

Out of the twenty five (25) applications that we received, one (1) was rejected due to insufficient hours for the supervision received component.

During the review process, the Board encountered the challenges related to incomplete documentation. In particular, some applications were submitted with missing documents, especially in the provision of Training in Clinical Supervision certification and log sheets reflecting clinical supervision hours received. Such omissions resulted in delays to the assessment process.

The Board continues to uphold rigorous standards in its evaluation of RCS applications and encourages applicants to ensure that all required documentation is complete at the point of submission to facilitate timely review.



Counsellors' Education Board

Co-Chairpersons:	Ms Au Hoi Ting Mr Seow Kwee Yong (stepped down 26 Feb 2025)
Members:	Ms Koh Chin Mei, Diana Ms Loh Bee Chin Cindy Dr Wong Teck Boon Anthony Ms Ang Bin Hua Yvonne Ms Sukumaran Nair Indu Mr Ganeshkumareshan S/O Sukumaran (Joined 26 March 2025) Mr Solomon Chua (22 January to 29 October 2025)
External Representatives	Ms Ng Wei Chern, Ministry of Social & Family Development Mr Nicholas Gabriel Lim, Singapore Psychological Society Mr Lee Wee Chee, National Council of Social Service



1. Overview of Activities

In 2025, the Counsellors' Education Board convened nine (9) meetings, including a dedicated work retreat. The year was marked by an intensive workload, reflecting both the volume and complexity of programme reviews undertaken.

The Board conducted detailed reviews of seven (7) programmes, comprising:

- Five (5) re-recognition applications; and
- Two (2) new programme applications.

In addition, one (1) new programme was reviewed at a preliminary level and consultation was provided to one (1) institution with keen interest to run a SAC-recognised programme.

Beyond documentary evaluations, the Board met with three (3) institutions to discuss identified concerns, clarify expectations, and better understand their future development plans. These engagements enabled constructive dialogue and strengthened mutual understanding of course recognition standards.



Counsellors' Education Board

2. Policy Review and Sector Engagement

In response to evolving sector needs, CEB commenced work on revisions to the Course Recognition Manual. The review aims to enhance clarity, strengthen standards, and ensure continued alignment with professional requirements. This work remains ongoing.

To foster collaboration and transparency, CEB hosted a tea engagement session on 11 April 2025 with representatives from most institutions offering SAC-recognised programmes. The session provided an opportunity to:

- Share potential revisions to CEB's course recognition requirements;
- Gather institutional feedback; and
- Discuss implementation considerations.

A key area of discussion was the merits and limitations of allowing remote counselling for practicum training. A robust exchange of views highlighted both the potential flexibility afforded by remote modalities and the importance of safeguarding training quality and competency development.

Following careful consideration, institutions were informed that students enrolling from 1 January 2026 are required to resume practicum training fully in a face-to-face format.

In view of the ongoing revisions to the Course Recognition Manual, CEB has paused the acceptance of new programme applications since late 2025. Further details regarding the revised requirements and the resumption of new applications will be communicated in 2026.



3. Board Membership Updates

2025 saw significant changes in Board composition.

- Mr Seow Kwee Yong resigned as Co-Chairperson of CEB in February 2025.
- Mr Solomon Chua stepped in to support the Board from January to October 2025.
- Mr Ganeshkumareshan S/O Sukumaran joined the Board in March 2025.

In addition, CEB appointed three (3) external representatives to be on Board from 1 March 2025 to 31 March 2026 to strengthen the Board's expertise and support its expanding workload.

- Ms Ng Wei Chern, Senior Assistant Director & Principal Social Worker, Office of the Director-General of Social Welfare, Ministry of Social and Family Development
- Mr Nicholas Gabriel Lim, Vice President (Development), Singapore Psychological Society
- Mr Lee Wee Chee, Director, Social Service Institute, National Council of Social Service

The Board records its sincere appreciation to all members and appointed representatives for their commitment, time, and valuable contributions throughout the year.

4. Conclusion

The year 2025 was one of substantial review, reflection, and transition. Amid an intensive schedule of programme evaluations and policy development, CEB remained committed to upholding rigorous standards while engaging constructively with institutions. The Board looks forward to completing the revision of its Course Recognition Manual and continuing its work in strengthening professional education standards in 2026.

Ethics Board

Co-Chairpersons: Ms Sophia Ang

Ms Denise Yap Xiu Fen (Effective 1 Aug 2024)

Rev Sam Kuna (08 May 2023 - 31 Jul 2024)

Members:

Mdm Koh Ai Sim Linda

Ms Mittal Vinti

Mr Tony Ong Kie Wee

Ms Ng Ai Ling

Dr Muni Winslow* (Psychiatrist)

Ms Rose Apphia Rujiab Faquir

Ms Low Seow Ling* (Lawyer) (Effective 11 October 2025)

Dr Steven Tham

Ms Stacey Teng* (Lawyer)

Mrs Toh-Chua Juliana Swee Lin

This year has been marked by significant activity and transition. The Board extends its deepest gratitude to all members and the Secretariat for their considerable time and diligent effort in conducting thorough investigations and hearings. Special thanks are due to our specialist board members, lawyers Ms Stacey Teng and Ms Low Seow Ling, and psychiatrist Dr Muni Winslow for their invaluable specialist insights.

In August 2024, we thanked Rev Sam Kuna for his many years of dedicated leadership as he stepped down as Co-Chair, welcoming Ms Denise Yap to the role. In 2025, note an upward trend in complaints, with sixteen (16) complaints. Six (6) complaints did not proceed beyond preliminary investigation, and three (3) undergoing preliminary review at the point of reporting.

Seven (7) complaints proceeded to full hearing; four (4) complaints remain under active hearing. Of the concluded hearings, one (1) complaint was unsubstantiated, while two (2) complaints were substantiated and resulted in disciplinary action for multiple ethical breaches.

We remind all members to practise diligently and ethically. The Association is committed to supporting members against unjustified complaints but will be unequivocal in addressing flagrant disregard for ethical principles and dishonesty in practice.

Register of Counsellors Board

- Co-Chairpersons:** Ms Liyana Gatot
Ms Yuyu Kow Jia Qi
- Members:** Ms Au Hoi Ting
Ms Chan Jia Hui, Candace (Effective 30 Jul 2025)
Mr Kenneth Ng Zheng Aik
Ms Liew Man Qin Jenny Yoanna
Ms Wong Poh Hoon Jackie
Ms Denise Yap Xiu Fen

	Reviewed		Approved		Number of Meetings	
	2024	2025	2024	2025	2024	2025
Clinical Member + Registered Counsellor (New Applications)	176	213	140	163	8	10
Registered Counsellor (Renewals)	216	303	226	327		

2025 was a landmark year for the Register of Counsellors Board, with record numbers showing the growing strength of Singapore's counselling profession.

The Board received 213 applications from prospective members, the highest number in our history. We approved 163 of these applications, maintaining our commitment to professional standards. We are also pleased to warmly welcome our new member Ms Candace Chan, whose addition reflects the quality of professionals joining our community. The Board also processed a record number of membership renewals, approving 327 applications from existing members. This high renewal rate shows the ongoing commitment and engagement within our Association.

The counselling landscape continues to evolve with new therapeutic approaches and changing client needs. We continue to adapt our processes and standards to accommodate these developments whilst upholding quality practice.

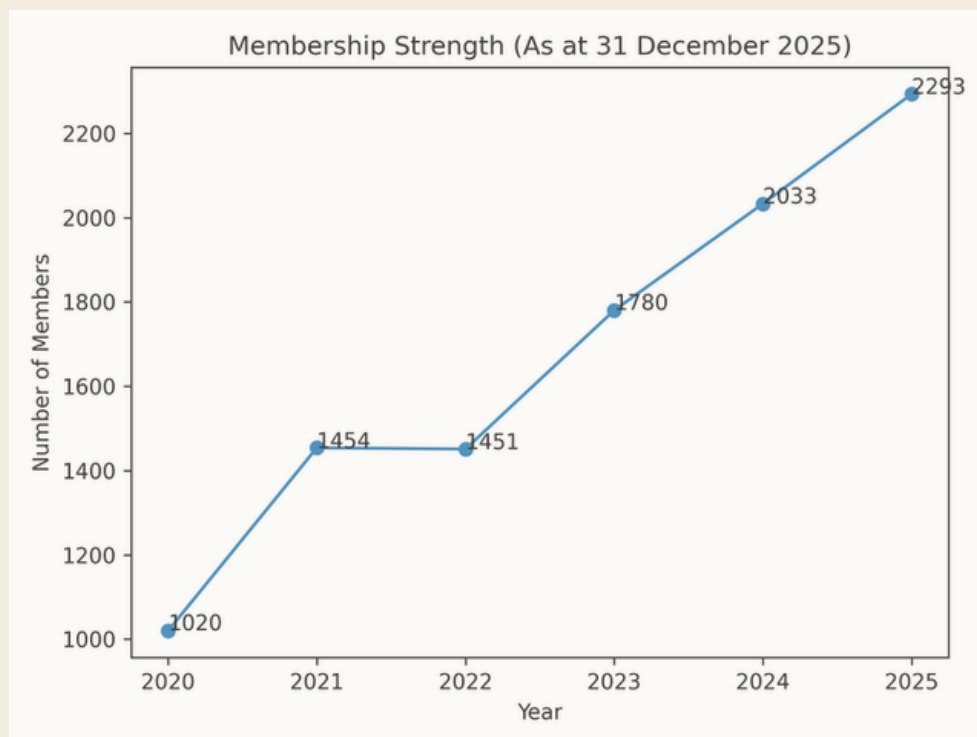
The Board convened ten (10) times during the year to ensure timely processing of all applications and renewals. We thank all members and volunteers for their dedication and support. We look forward to continuing to advance the counselling profession and serve the community.



MEMBERSHIP STRENGTH

AS AT 31ST DEC 2025

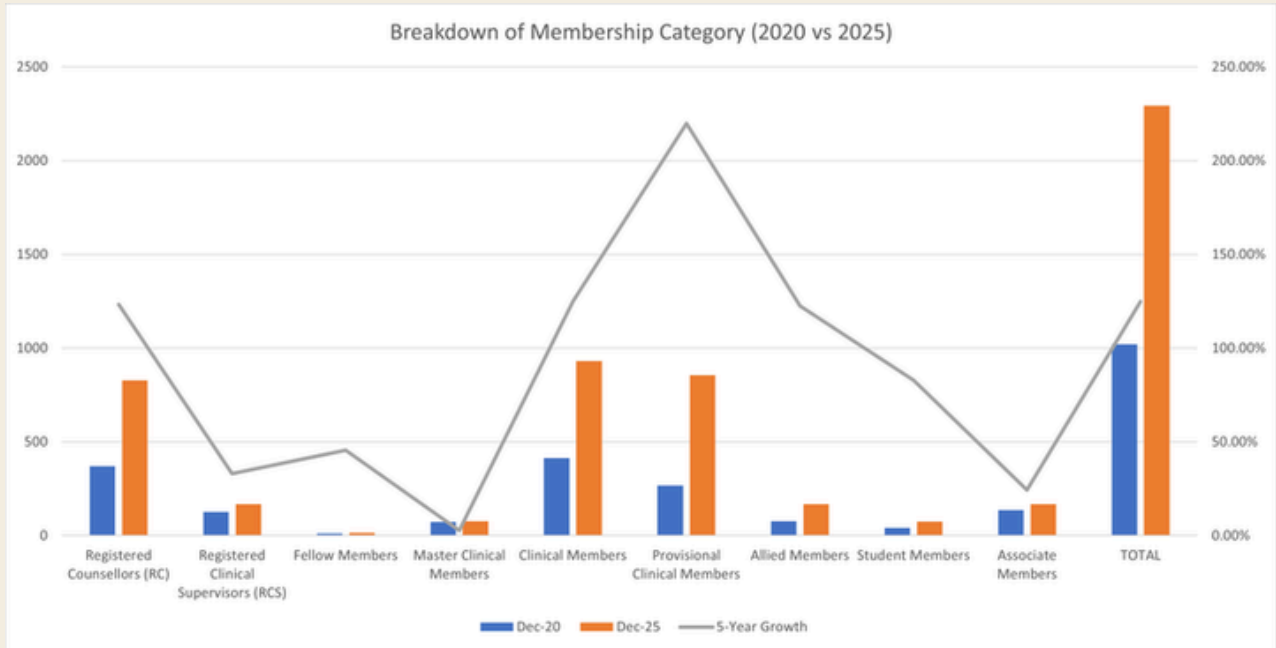
	MEMBERSHIP CATEGORIES	DEC 2021	DEC 2022	DEC 2023	DEC 2024	DEC 2025
	Registered Counsellor (RC)	341	472	570	693	828
	Registered Clinical Supervisor (RCS)	106	126	139	158	169
CAT A:	Fellow Member	12	13	14	16	16
CAT B:	Master Clinical Member	80	68	72	74	76
CAT C:	Clinical Member	527	555	669	789	931
CAT D:	Provisional Clinical Member	427	511	692	769	857
CAT E:	Allied Member	106	98	122	144	169
CAT F:	Student Member	71	71	71	85	75
CAT G:	Associate Member	231	135	140	156	169
	TOTAL:	1454	1451	1780	2033	2293



From 2020 to 2025, SAC's membership grew by an average of 17.6% per year, reflecting the strength, commitment and growing confidence of our professional community.

MEMBERSHIP GROWTH ACROSS CATEGORIES (2020-2025)

AS AT 31ST DEC 2025



Growth of Each Membership Category over five (5) years:

Clinical Members: +124.9%

Provisional Clinical Members: +219.8%

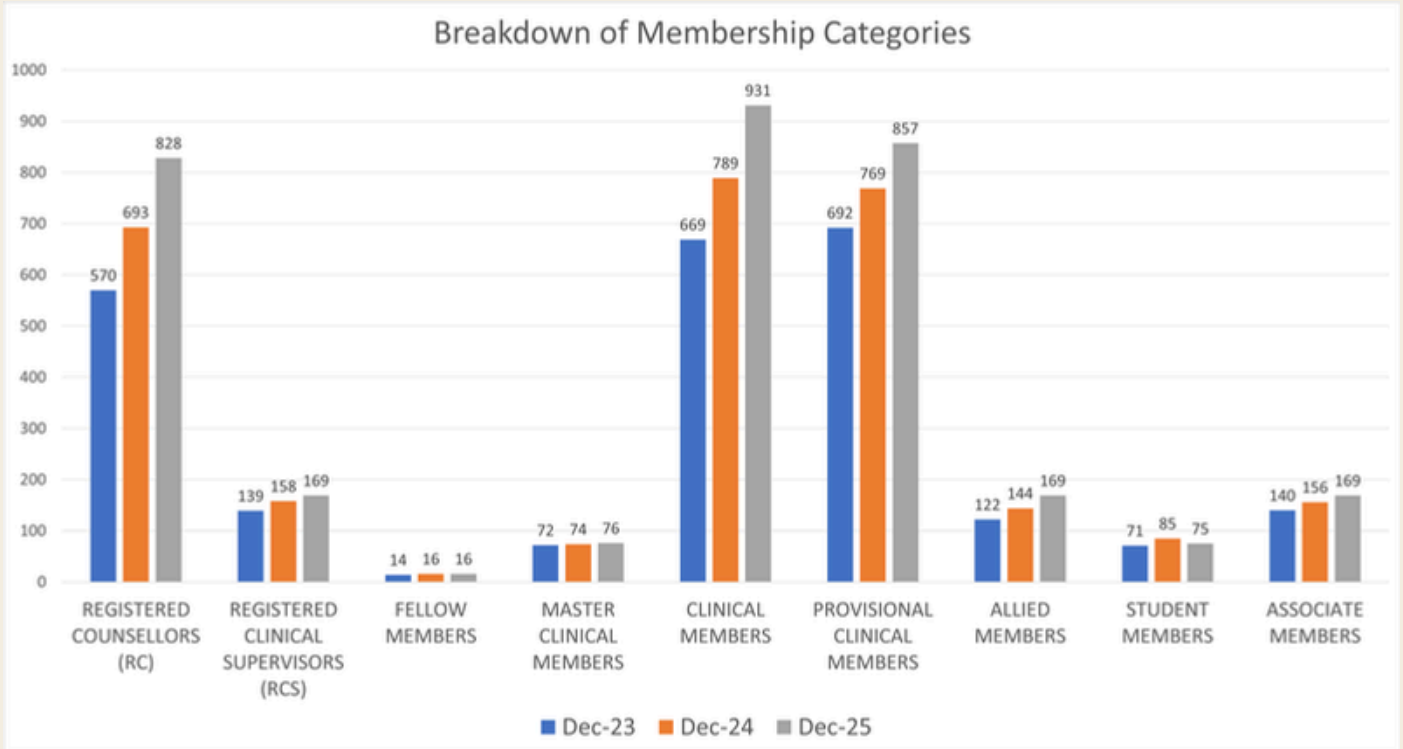
Allied Members: +122.4%

Over the past five (5) years, SAC's core professional membership categories have more than doubled. Clinical Members and Allied Members each recorded growth of over 120%, while Provisional Clinical Members grew by nearly 220%, reflecting a strong and expanding professional pipeline.



MEMBERSHIP STRENGTH

AS AT 31ST DEC 2025



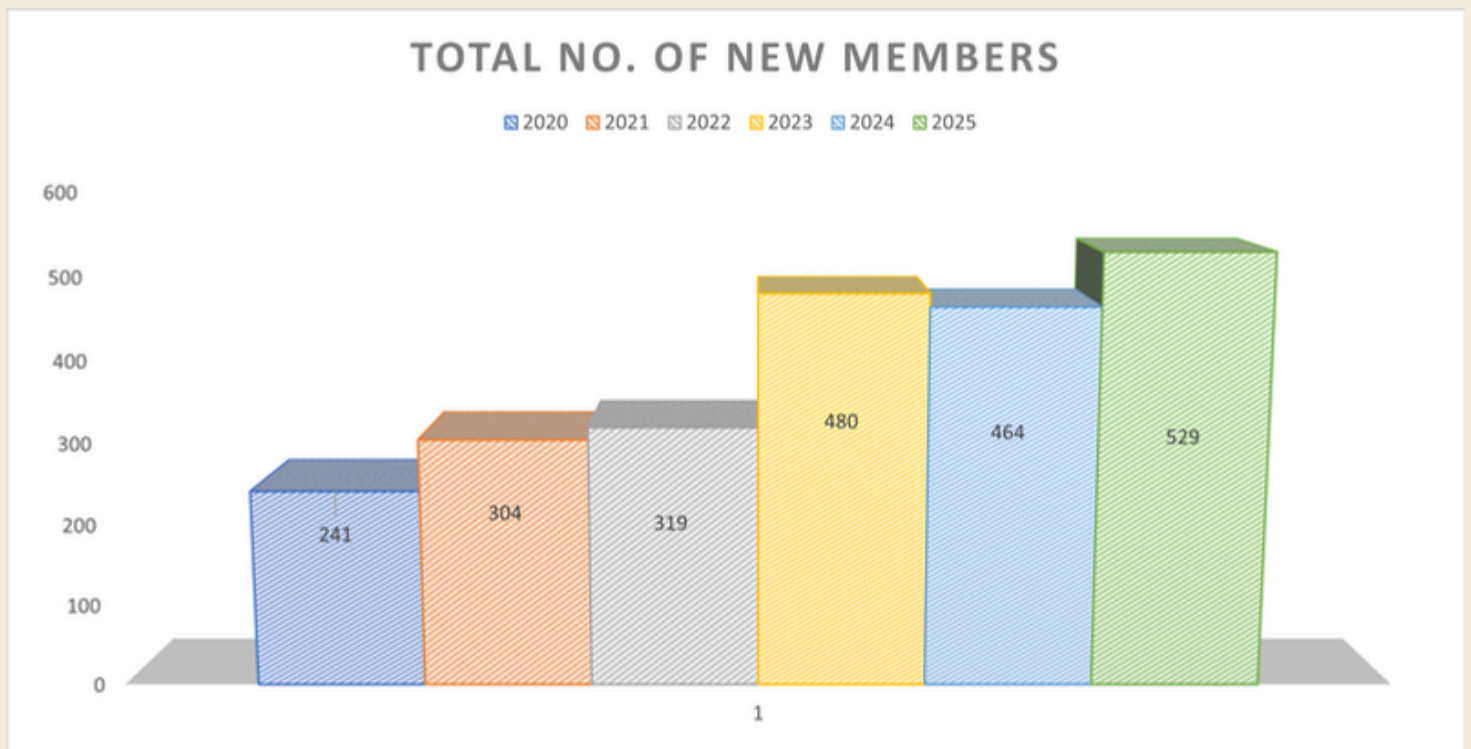
Membership grew across major categories between 2023 and 2025, with Clinical and Provisional Clinical Members forming the largest segments of SAC's membership base. Notable increases were seen in Registered Counsellors, Clinical Members and Provisional Clinical Members.



MEMBERSHIP STRENGTH

AS AT 31ST DEC 2025

	2020	2021	2022	2023	2024	2025
Total Number of New Members	241	304	319	480	464	529



Acknowledgement

SAC Honorary Legal Advisor

Ms Angelina Hing

Angelina Hing, Managing Director of Integro Law Chambers LLC, has extensive legal experience. A former litigator and District Judge in the Family Justice Courts (2009–2016), she mediated complex child custody and divorce cases. Inspired by her work, she founded Integro Law Chambers in 2016 to promote amicable resolutions in family law.

Angelina is an accredited mediator with the Singapore Mediation Centre (SMC), Singapore International Mediation Institute (SIMI), and the Centre for Effective Dispute Resolution (CEDR). She also serves as an adjudicator at the Financial Industry Disputes Resolution Centre Limited (FIDREC).



SAC BOARDS

Clinical Supervision Board

Co-Chairpersons: Dr Jessica Leong – Chan Lai Cheng
Mr Joachim Lee, PBM

Members: Ms Koh Choo Choo Sharon (Mrs Sharon Sng)
Mr SB Viknesan
Ms Livingston Anna Catherine
Ms Reena Goenka
Mr Michael Gabriel Pillai

Ethics Board

Co-Chairpersons: Ms Sophia Ang
Ms Denise Yap

Members: Mdm Koh Ai Sim Linda
Ms Low Seow Ling* (Lawyer)
Ms Mittal Vinti
Dr Muni Winslow* (Psychiatrist)
Ms Ng Ai Ling
Ms Rose Apphia Rujiab Faquir
Ms Stacey Teng* (Lawyer)
Mr Steven Tham
Mrs Toh-Chua Juliana Swee Lin
Mr Tony Ong Kie Wee

Counsellors' Education Board

Co-Chairpersons: Ms Au Hoi Ting
Mr Seow Kwee Yong

Members: Ms Ang Bin Hua Yvonne
Mr Chua Ming Hwee Solomon
Mr Ganeshkumareshan S/O Sukumaran
Ms Koh Chin Mei, Diana
Mdm Loh Bee Chin Cindy
Ms Sukumaran Nair Indu
Dr Wong Teck Boon Anthony
Mr Nicholas Gabriel Lim (SPS)
Mr Lee Wee Chee (NCSS)
Ms Ng Wei Chern (MSF)

Register of Counsellors Board

Co-Chairpersons: Ms Yuyu Kow Jia Qi
Ms Liyana Gatot

Members: Ms Au Hoi Ting
Mr Kenneth Ng Zheng Aik
Ms Chan Jia Hui Candace
Ms Liew Man Qin Jenny Yoanna
Ms Wong Poh Hoon Jackie
Ms Yap Xiu Fen Denise

ACKNOWLEDGEMENT

SAC SUB-COMMITTEES

COMMUNITY COUNSELLORS SUB-COMMITTEE

Co-Chairpersons: Mr Wilson Mack
Mr Leow Hock Chuan John

Members: Ms Chan May Peng
Ms Lin Zee Ling Corrine
Ms Gan Sih Tar Michele
Ms Tan Yi Shan

PRIVATE PRACTITIONERS' SUB-COMMITTEE

Co-Chairpersons: Ms Hema Gurnani
Ms Jean Tay

Members: Mr Desouza Karl Francis
Dr Gloria Kong
A/Prof Frederick Low
Mr Winston Tay
Ms Sophia Goh

MEMBERSHIP SUB-COMMITTEE

Co-Chairpersons: Ms Abigail Catherine Yang Wenjie
Ms Lim Bee Bee Carolyn

Members: Mr Abdul Hakim Bin Adzhari
Mdm Anusha Balasingham
Ms Atika Shukla
Mr Chew Hock Meng
Mr Desouza Karl Francis
Ms Edmund Celine Vasantha
Mr Ian Ong
Ms Koh Yun Qing Irene
Mr Lim Mou Nyee
Ms Loh Li Nah
Mr Muhammad Danial bin Ahmad Sufyan
Ms Rachel Chan Wen Yeu
Mr Sam Roberts
Ms Smitha Venkatesh
Ms Sunita Rai
Mdm Tan Meow Lan Joyce
Ms Tan Sook Khuan Helenna
Ms Thakore Chitragada
Mr Toh Huat Peng Benjamin

RESEARCH & PUBLICATION SUB-COMMITTEE

Co-Chairpersons: A/Prof Low Poi Kee Frederick
Dr Lee Boon Ooi

Members: Dr Bibi Jan Binte Mohamed Ayyub
Dr Chan Pei See Joyce
Dr Fan Kam Tong Gilbert
Dr Kok Jin Kuan
Dr Muhammad Hafiz Bin Zainal Abidin
Dr Ng Da Xuan
Dr Pon Kwai Ling Alicia
Dr Saravanakannan Ganapathi
Dr Toh Mui Hua, Catherine

SCHOOL & COLLEGE COUNSELLORS SUB-COMMITTEE

Co-Chairpersons: Mr Jeffrey Lee Chung Yean
Mr Mohammed Zulkarnain Bin Abdul Aziz

Members: Ms Esendemir Sekhon Berna
Ms Duraipandi, Angeline Jayanthi
Mr Joshi s/o Chandrasenan
Mr Leong Kok Kuan Tony
Ms Shamini Ras Ramachandran
Mr Teo Donovan
Ms Wong Zhi Xin, Charlene
Ms Xiao Li En
Ms Yap Mei Mei

MEMBERS LISTING

AS AT 31st DEC 2025

FELLOW MEMBER

A0002 D'ROZARIO VILMA
 A0003 ELIZABETH NAIR
 A0004 THIO-HO TWA MOI VICKY
 A0005 YEOH GUEH KWANG
 A0006 NG TIAT KHUAN JONATHAN
 A0007 ONG TECK HONG
 A0008 TAN SWEE YEE JOYCE
 A0009 TOH-CHUA JULIANA SWEE LIN
 A0010 KHOO MOLLY
 A0011 SYN MARGARET
 A0012 KUNA SAM
 A0013 JIM BIN ISMAIL OMAR BEK
 A0014 TAN BOON HUAT
 A0015 JESSICA LEONG - CHAN LAI CHENG
 A0016 LIM BENG KHUAN CHRISTINE
 A0017 ANG SOPHIA

MASTER CLINICAL MEMBER

B0001 HEMA GURNANI
 B0003 LEE BOON OOI
 B0005 LOI IRENE
 B0008 TAN LI LIAN TRINA
 B0009 JOSEPH JOHN
 B0011 ONG KWEE HIONG CLARE
 B0012 HOGAN, DEBBIE (DEBORAH CANNON HOGAN)
 B0013 RUTH CHUA WANG SOON
 B0016P KOH CHOO CHOO SHARON (MRS SHARON SNG)
 B0017 TAN CHIN YEOW AUGUSTINE
 B0019 BUNG THERESA (TAN LEE)
 B0020 HO SWEE MIN LAURENCE
 B0023 KOK LEE FONG
 B0024 NG BEE ENG DEBBIE
 B0025 QUEK JWEE LENG EDWIN
 B0026 HO GEOK CHOON DANNY
 B0027 LYNETTE BALOTA
 B0028 LIM PENG ANN ADRIAN
 B0030 MACK WING HUNG WILSON
 B0031 KOH AI SIM LINDA
 B0032 TAN KAY SAN WILSON
 B0033 JOYCE CHAN PEI SEE (JOYCE ZENG PEISI)
 B0035 KONG SEET MUI
 B0037 RAMACHANDRAN SARADHA
 B0040 ONG CHOOI SENG
 B0043 NG CAROLYN
 B0045 NISHA RANI D/O RUGNATH
 B0046P YOO SIEW FOONG FLORENCE
 B0048 EVELYN ROCHELLE KOH HWEE LIN
 B0051 PUSHPALATHA SHEENA JEBAL
 B0052 LOKE KENG CHOONG
 B0053 YEO KONG LEONG ALAN
 B0054 CHEN XIAO MING JEAN
 B0055 CHO CHIA MIN
 B0057 RAJ NUR FARHA QAIYISHAH @ SUNITA DEVI
 B0058 YAP LAY KHOON DORIS
 B0059 TEO LAK KWANG WILLIAM
 B0060P BONG BENNY
 B0061P CHANDRA DIANA
 B0062P TONY ONG KIE WEE

B0063 BRYAN CRUCIS SHEN SHUYLIANG
 B0064 DANG THI QUE HUONG ESTHER
 B0066 GUPTA SUHRITA (RITA)
 B0067 CHAN TECK YOONG THERESA
 B0068 LIM-TEO LEK MEI
 B0069 WONG MEE YIN (MAY)
 B0070 TOH HWEE BOON
 B0071 NG CHONG CHEE DAN
 B0072 LAM KEE SOON ANDY
 B0073 CHUNG YEE LIN
 B0074 WONG GAH MUN CONNIE
 B0075 LAU HON SHIN
 B0076 KOAY MICHELLE LI MAY
 B0077 ANG TECK EE
 B0078 MOONG SAN HWEE LEONARD
 B0079 CHEONG WAH LOONG ALVIN
 B0080 KOH AI JIN
 B0081 JOSHI S/O CHANDRASENAN. PB.PBS
 B0082 RAM NARAIN DUBEY
 B0083 LO-TAN LI CHING REBECCA
 B0084 LU WINNY ALDRIDGE
 B0085 LOH BEE CHIN CINDY
 B0086 ANDY SIM YIH SHYANG
 B0087 ANGELINE JAYANTHI DURAIPANDI
 B0088 LOW POI KEE FREDERICK
 B0089 TEOH TAN PING ANGELINE
 B0090 TAN YEN LING ADELINE
 B0091 WONG TECK BOON (HUANG DEWEN), ANTHONY
 B0092 REENA GOENKA
 B0093 GIAM XIUHUI
 B0094 LOH KOOI KENG JOSELYN
 B0095 TANG SOOK FONG
 B0096 VANDANA KHANNA
 B0097 TAY JEAN JIN LU
 B0098 PNG TIANG HSIA MICHELLE
 B0099 FONG YUN LING ELLEN

CLINICAL MEMBER

C0001 FLORENCE RUTH LOO
 C0003 KAN SEE MUN
 C0004 TOH QUEE YONG JOANNE
 C0010 CHIA LEE MENG PAULINE
 C0015 MICHAEL GABRIEL PILLAI
 C0016 TAN SOON CHOON HENRY
 C0017 LYDIA CE LIM (CHANG)
 C0019 PNG ROBIN
 C0021 AUDREY KOH KARMEN
 C0022 TAN LAY BEE NAOMI
 C0025 LUI HAH WAH ELENA
 C0026 LIM-TAN GUAY NEO FLORENCE
 C0029 CHIA KWOK YING
 C0030 GOH SIEW KIM WENDY
 C0034 NG SIANG KIAT VIVIENNE
 C0035P SOH GUAN HENG STEVEN
 C0039 MOK NELLIE
 C0040P KOH BEE HOON BELINDA
 C0041 EDMUND TEO WEI PIN
 C0046 CHENG CHEE-SENG
 C0049 PATRICE PEDJOE LEE
 C0050 LEE-LEK SIEW LING YVONNE
 C0052 JOHN PHILIP LOUIS

MEMBERS LISTING

AS AT 31st DEC 2025

C0057 CLAIRE RUTH HOLMES
 C0059 RAFAEH BTE BUANG
 C0060 KOH CHIN MEI DIANA
 C0061 LEONG WOO HO RAYMOND
 C0064 EE CHENG LIAN VIVIAN (MRS VIVIAN NAVARATNAM)
 C0069 GAN SIH TAR MICHELE
 C0070 KONG MUN YEE CYNTHIA
 C0071 NG SOOK WAI JAIME
 C0074 SARAVANAKANNAN GANAPATHI
 C0076 LIM AI CHIA
 C0079 GOH KUI HWA
 C0081 CHAN TUCK CHEE PHILIP
 C0082 CHEN YA SHU MICHELLE
 C0087 SNG NGIAP TECK JIMMY
 C0088 SZETO YOKE KHENG GERALDINE
 C0092 SEAH MENG HWA
 C0093 YAP CHWEE PHENG
 C0095 LAM YOKE FONG
 C0096 BERNARD MACKENZIE MARIADASS JAMES
 C0098 HENG SU-YIN JACQUELINE
 C0100 HO SOO YI KAREN @ MRS KAREN SNG
 C0102 LIEW SHUH ONN DESMOND
 C0103 KOH SEE BOEY WENDY
 C0105 TAN SOH HIANG
 C0108 GENEVERE TOLIBAS-CASTRO
 C0111 TIN TINA
 C0113 KWAN POH CHUE JACLYN
 C0115 LEE TAI LOONG JOACHIM
 C0117 CLARISSA LEE MUI CHENG
 C0120 CHEONG MUN YEE
 C0122 WONG CHIEW MEE JANE
 C0124 ONG CHIN AIK KENNY
 C0126 LIM TZE CHUANG DUSTIN
 C0128 CHEN BOYU
 C0130P PONG PAO LING THERESA
 C0131P MOHAMMED ZULLKARNAIN BIN ABDUL AZIZ
 C0132 KOH AI PEI ALICIA
 C0135 CHEW YAT PENG
 C0136 ANG YEW CHUAN
 C0137 FAN KAM TONG GILBERT
 C0138 CHEE AI LAY
 C0140 SIEW CHEE KIT JONATHAN
 C0142P CHENG CHI YIN SYLVIA
 C0143P TAN CHWEE PENG AMY
 C0144 STANLEY S/O MUTHUSAMY
 C0145 YEAP HWEE LING BETTINA
 C0146 WU CHE VUN STEVEN
 C0147 CHAN GUAT CHOO
 C0150 ARATI VIDYADHAR MALI
 C0152 VANITA D/O KANESON
 C0153 KHOO SIEW BEE
 C0154P GOH SHAN SHAN VIVIEN
 C0155P FOO SOO JEN
 C0156 TAN YIH SZE
 C0157P GOH KEE CHYE LAWRENCE
 C0161P TAN SOO YUIN
 C0162P CHAN SOOK YING JACQUELINE
 C0163 SIM SIAN KIONG ELIJAH
 C0164 LEE SOCK KUAN
 C0167 HONG JOEY
 C0170 ALEX QUAH POH HOCK
 C0172 SONG POH POH ANGELINE
 C0173 KOH SIEW YEN GARY
 C0175 LIM IVAN
 C0176 DENG CHEE KWONG JEREMIAH
 C0177P JASLYN NG
 C0180 WANG YI SHING
 C0183P CHAN PENG YEW RAYMOND
 C0184 LUO PIN XUAN
 C0185 TANG AI CHING CHRISTINA
 C0188 CHEE HSIEH MEI CHARMAINE
 C0189 CHING PUI FUN
 C0191 JEFFREY LEE CHUNG YEAN
 C0192 LAI TIEN CHIN JACINTHA
 C0193P IP LEE LEE
 C0194P CHIENG YEE CHIE JOYCELYN
 C0196P ANG BEE LIN MARLENE
 C0197 SEOW KWEE YONG
 C0198 GOH MEIBO GUILINI GRACE
 C0199 TAN SIEW FOONG
 C0201P TAN MUI LEE DOREEN
 C0202 CASSANDRA CHIU
 C0204 LEE SOO PIN PAULINE ADDISON
 C0205 LAU MUI CHOO WENDY
 C0206 SUZANNA LEE SAN SAN
 C0208 HIEW YING MIN
 C0209 ONG I. WARTON
 C0210 CHEW GEOK BEE
 C0212 CHOU SHEN CHI DEBORAH NEE LIE
 C0213 LIM BEE BEE CAROLYN
 C0214 TAN HUI HONG DAWN
 C0215 SIM SIEW CHOO MABEL
 C0216 TOO MENG CHEN ELEANOR
 C0219 LOUIS HALBERT
 C0220 KOH MEI LIEN CANDICE
 C0221 NGIAM KEE PENG (YAN JUPING)
 C0226 LIM HUI KHIM HUI KHIM
 C0227P CHAN MAY PENG
 C0228 YANA BERENICE RICART DE LILLEY
 C0229 LIVINGSTON ANNA CATHERINE (CATHY)
 C0230P MITTAL VINTI
 C0231P OH WAN CHYI VALERIE
 C0232 LEONG GEOK HIOK PAULINE
 C0233P POH SHEE YEAN
 C0234 PREETI PANDIT
 C0237P LIM MUI GEK JANE
 C0238P TAN SOO YIN
 C0239 LINCOLN COLIN MICHAEL
 C0241 NOOR FARIDAH A RAHIM
 C0243 LIM PUAY ENG
 C0244 LIAU KIEN FIE ALBERT
 C0245 ROSE APPHIA RUJIAB FAQUIR
 C0246 TAY SWEE AII SUSAN
 C0247 ANGELA MAY LIN KOH
 C0248 GOH TIAN SEAH RICHARD
 C0250 CHIN YOKE MUN
 C0251 SB VIKNESAN
 C0252 YEE BOON CHEN JEANIE
 C0253 GOH SUE CHERN SUSAN
 C0254 AARTI MUNDAAE
 C0256 LIAN TAI YU AMANDA
 C0259 AGASHE MADHURA
 C0260 WANG LE FENG ANDREA
 C0262 NEO MARY
 C0263 ACHANTA SHANTI
 C0264 GRACE PHOON
 C0265 AGNES NG HWI MEOW
 C0266 STEVEN TAN WEI TECK

MEMBERS LISTING

AS AT 31st DEC 2025

C0267 ELIZA YEE FOONG WAH
 C0268 LIM BEE LIAN JUDITH
 C0270 CHUA GEK LIN GERMAINE
 C0271 THAM CHEE KIN STEVEN
 C0272P SHAMINI RAS
 C0275 BETTY LIM CHEE DING
 C0276 TAY SIOK CHOO MARGARET
 C0278 CHUNG EE-LYNN RACHEL
 C0279 FERNANDO MONICA CHRISTINE
 C0281 SOLIANO MICHELLE MONICA
 C0285 LIM SAY TECK RICHARD
 C0287 DASARI PUSHPAVATHIE
 C0288 KAH HWEE CHUA
 C0289 CELINE VASANTHA EDMUND
 C0290 CHEE SAU MUI FIONA
 C0291 CHIN YONG ANN MICHAEL
 C0293 LEONG MUN LENG JOANA
 C0297 SUKUMARAN NAIR INDU
 C0298 TAN YIK CHING ANDRINA
 C0299P LEE HUI LAN WINNIE
 C0300 CHIN MEW YAM FLORA
 C0301 LIM BEE YIAN VIVIEN
 C0304 TEO SWEE LING LENA
 C0305P CHAN LAI PENG VICTORIA
 C0306 LO HUI MIN CHRYSSTELLA
 C0308 SOH CHOON LEE
 C0309 ANG KIM SAN NORMAN
 C0310 RENA SIVADAS
 C0311 CHAN YIM PENG GRACE
 C0312 WONG MI FUNG DOREEN
 C0314 YAP XIU FEN DENISE
 C0315 LIM ZHIYI GYMY
 C0316P KOH LEE SIAN AGNES
 C0317 SOLEMAN MARGARETH
 C0318 SURIYA SANJEEVAN S/O ARUMUGAM SURIYA SANJEEVAN
 C0319P KUMARASAMY DEVIKA
 C0323 LEONG KOK KUAN TONY
 C0324 TAN LI SI DAPHNE
 C0325 WONG LIANG HONG
 C0326 C N RAJANDRAN SUGANTHI
 C0327P LEOW HOCK CHUAN JOHN
 C0328 RAJAGOPAL MALLIGHASE IVAN JOSEPH
 C0329 MAHER O'SULLIVAN FIONA
 C0330 CHAN QUEE ENG CARRIE
 C0332P YEO JASMINE
 C0333P WONG WENG KEONG
 C0335P YAP PEI SEI KAYLA
 C0337 WOO CHOO PENG MATTHEW
 C0338P CHEONG MUN KIN
 C0339 HO KOK INN
 C0340P CHEN SHIYUN CHARLOTTE
 C0341 LIANG MEI LUN ALICE
 C0343 TANG WENG FUNG PRISILLA
 C0346 AZRIN BIN ABDUL RAHIM
 C0347P CHAN YIN FUN RACHEL
 C0348 AU HOI TING
 C0349 SOOHOO MING YIM
 C0350 MANASSEH RUTH
 C0351 TOO SENG HONG DANIEL
 C0352 GUO LIH JIA
 C0353P LIM MEI IMM MAGDALENE
 C0354P CHAN HONG KHIM ALBINA
 C0355 LAU CHOE KENG TRUDY
 C0357 WENDY LIM CHIEW SHAN MRS YEAP SOON LEONG
 C0358 LIM WAN CHENG CHERYL
 C0359 CHARLEY JOYCE
 C0361 VANESSA JUANITA SAMUEL
 C0362 FOO LAI LAN PAULA
 C0363P RUSLY PAULA BEATRIX
 C0364P CHONG-TAN SEOK HWA VIVIEN
 C0366 SILVIA ISABEL CORREIA SARAIVA WETHERELL
 C0367 WONG WUN CHEE
 C0368 WESLEY SNG
 C0369 YUKA AIGA TAY
 C0370 CHAI CHIN YAUN NANCY
 C0371 LEE MUN
 C0372 CHIA HUI ERL
 C0373 SANTOSO LANNY
 C0375P SHEILA MUKHTAR KAUR
 C0376 NG POH YAIP STEVEN
 C0377 MUHAMMAD HAFIZ BIN ZAINAL ABIDIN
 C0378 HO SUM TIM, CHRISTINA
 C0380 ELYSIA EILEEN TAN SIEW SIEW
 C0381 ONG CHEN HOCK CHARLIE
 C0382P ORTIZ VIDA BANARES
 C0383 TOH MUI CHOO, GENA
 C0384 CHRISTOPHER GRESCH
 C0385 KELVYANNE TEOH LIN SIEW
 C0386 CHONG RAYMOND
 C0387 WONG POH HOON JACKIE
 C0388 KHOO SIEW ENG
 C0389 LOW YIING JIA
 C0390 ESTHER TAN TZER
 C0392 ANTHONY YEO LAI SOON
 C0393 TAN SOK NGIN
 C0394 JULIE NETANELA GOLDSTEIN
 C0396 KOH LING YING PAMELA
 C0397 NG YEW HOON (LINA)
 C0398 KWEK TECK HONG BENJAMIN
 C0399 TAN ESTHER
 C0400 CHIN GA LI
 C0401 CHIA SIEW LIAN ANITA
 C0402 TAN LIAN TUAN ALANA
 C0403 POON-LOKE FOONG PING ALICIA
 C0404P TANG WAI HARN
 C0405 DAWN KOH LI WEI
 C0407 LIM GEK TIN DONNA
 C0408 TAN WENG HUN TERENCE
 C0409 CHAN PENG MENG
 C0410 ANG BIN HUA YVONNE
 C0411 LEE EE LING JINTANA MRS JINTANA TANG
 C0412 YEO NENG SHENG DOMINIC
 C0413 TAN WEI QI, MICHELLE
 C0414 ANDREW JOHN DA ROZA
 C0415 TAN RUI PING BENJAMIN
 C0416 JIN KUAN KOK
 C0418 JOAN CHIA PUAY CHER
 C0419 NATALIE WONG CHAI LING (NATALIE WANG CAILING)
 C0420 LEE SHU HUI PRISTIN
 C0421 KAVITHA MANOKARAN
 C0422 ANSON YOO CHIN GUAN
 C0423 FATHIMA SHAFEEKA MOHAMED FARIS
 C0425 HO KOON LEE CONNIE
 C0426 CECILIA MOK HWEE BEE
 C0427 PRISCILLA SHIN HUI
 C0428 KAYLA CHNG JUN HUI
 C0429 YOONG MIN YI MELISSA
 C0431 TAY EE LENG ELAINE

MEMBERS LISTING

AS AT 31st DEC 2025

C0433 DOMINICA CANDY CHUA WENTING
 C0434 LAM WAI MUN
 C0435 NG DA XUAN
 C0436 CHOO HUA LONG JOSEPH
 C0437 CHANG XUE LI SHERRY
 C0438 HAN SHUYU
 C0439 WOON LI LIN SHIRLEY
 C0441 NEO KAH YAN DIANA RUTH
 C0442 KATHIRAYSON ANITA
 C0444 CHIAM LING LING
 C0445 PAWEENA WOOHITHA
 C0447 GOH WEI SHEN
 C0448 XIAO LI EN
 C0449 DEEPIKA D/O NARESH JAWHARMAL
 C0450 HO TZE YEE
 C0451 HSU YUK CHOR PETER
 C0453 NG WEI XIN
 C0454 KHONG AI LING MARIE
 C0455 VYTIALINGAM HELENA
 C0456 LIM POH CHENG SUZANNA
 C0457 TAN HONG KHENG
 C0458 HILTON HO BOON CHYE
 C0459 CHEW JEE SENG
 C0460 WONG KOK CHEW
 C0461 FADZILAH BINTE ABDUL RAHMAN
 C0462 KENNETH NG ZHENG AIK
 C0463 DABAS REENA
 C0464 WEE SIN TECK
 C0465 LEE PEI-EN MYLENE
 C0466 DANIEL TAN FU ANN
 C0467 YEUNG CHI KEI
 C0468 YEO CHONG YUEN
 C0469 YUYU KOW JIA QI
 C0470 NICOLE ANNE CHEW-HELBIG
 C0471 SHAMINI NEDUMARAN
 C0472 LIM HUI LING SHARON
 C0473 MELLISSA LETCHMI D/O A KRISHNAN
 C0474 LAM CHOON CHAIP BENEDICT
 C0475 WONG LIAN-YA KATRINA
 C0476 LAI WAN NING
 C0477 FABIOLA AGUSTINA KANSIL
 C0478 ONG LI LIAN
 C0479 POON OI LIN
 C0480 LIAO WENQIN, PAMELA
 C0481 LIM CHING-HWA JADELYN
 C0482 LIM FANG YAN JESSICA
 C0484 AUGUSTINE TAN KOON CHOW
 C0485 CHEN SHEAU ING
 C0486 SAM SUET CHIAN
 C0487 SHAIKH MOHAMED REZA BIN MOHAMED BAMSARI
 C0488 YAP ZHENG JIE
 C0489 CHONG LIE SAN
 C0490 CHUA LI MING ELAINE
 C0491 CHOO SIEW NOI
 C0492 BATHMAN SHERYL ANNE
 C0493 LIEW YEN HOONG
 C0494 GOH BEE SHAN
 C0495 SAPNA MATHEWS
 C0496 GIRIJA PADMANABHAN NAMBIAR
 C0497 LIM MOU NYEE
 C0498 PON KWAI LING ALICIA
 C0499 LIYANA GATOT
 C0500 HUANG MEIQI AMY
 C0501 XIE LIXIN
 C0502 CELESTINE CHUA YUN NA
 C0503 CHAN KA PO
 C0504 CHIANG SIEW WEI FRANCISCA
 C0505 CHOK JUIN HWA KAREN
 C0506 NG AI LING
 C0507 HEMA D/O SIVANATHAN
 C0508 KWOK WAI LENG
 C0509 CHONG KAIWEI
 C0510 TAN YUELING CHLOE
 C0511 TARIN ONG MEI THENG
 C0512 TAN PECK HIAN
 C0513 CINDY KONG YI HUI
 C0514 DEBORAH TAO KEXIN
 C0515 LAY KEOW LIM
 C0516 SWAIN SUKALYANI
 C0517 TAN MING CHIN
 C0518 TOH HUAT PENG BENJAMIN
 C0520 HUGGINS PAULA ELIZABETH
 C0521 YIK CHOW MENG
 C0522 LEE TSUI LING
 C0523 SIA CHONG HAO
 C0524 KWEK BAN SENG LEONARD
 C0525 LIM MENG CHIN
 C0526 TAN YUYUN
 C0527 LOY CAIHAO JASPER
 C0528 FOO CIRONG
 C0529 LEE OILEEN YONG YENG
 C0530 LIM LI ZHEN
 C0531 CHEAH GRACE
 C0532 LIM HUI YI VALERIE
 C0533 KHONG WEE LING, CINDY (KANG WEILING, CINDY)
 C0534 SUKHTANKAR NANDINI
 C0535 SOH JUN DA SHAWN
 C0536 SIEW CHAU YENG
 C0537 LIM HUI ZHI CHARMAINE
 C0538 LIM HUI THENG GRACE
 C0539 CHAN JIA HUI, CANDACE
 C0540 JENNY LIM AI LIN
 C0541 PAN MINEN ELIZABETH
 C0542 LIM TECK SENG RONALD
 C0543 FOONG CHEANG BONG WHELAN
 C0544 SANO HITOMI
 C0545 SHANNON PETER
 C0546 JEANIE SO
 C0547 PATHMA JOTHEE KESAVA KUMARAN S/O GOVINDASAMY
 C0548 NATHAN VIJAY MELWANI
 C0549 JOSHUA KOH YONG SHENG
 C0550 SOH CHIN BOON
 C0551 TEE SIM CHIE
 C0552 LIN QINGFEI
 C0553 LIM HUAY KENG KATHERINE
 C0554 CALVIN TOCK JUN FA
 C0555 MARYATI M DAHIM
 C0556 WOON VIVIEN NEE HON FOOI SIN
 C0557 LUM WAI LING PATRICIA
 C0558 HUI YOKE CHENG
 C0559 AGNES LEE MENG AI
 C0561 LEE HONG LENG JONATHAN
 C0562 YEO SU YIN EUNICE
 C0564 PHUA TIONG ENG
 C0565 THAM IM MAY
 C0566 RADHIKA HARALALKA
 C0567 PADMA JAIRAM
 C0568 SUNITA RAI

MEMBERS LISTING

AS AT 31st DEC 2025

C0569 CHUA YONG SHENG
 C0570 WONG SOO PING
 C0571 TAN TENG LIANG
 C0572 NG EEW HWONG JAQUE
 C0573 BONG YIOE LING
 C0574 LIN YUIN CHENG DEBBIE
 C0575 WONG MEI TOON
 C0576 ZARA KAUSHIK
 C0577 YEO POH CHOO WENDY
 C0578 PARADKAR VRUSHALI MANOJ
 C0579 LIU JIANCONG
 C0580 TOH JACQUELINE
 C0581 LOH LI NAH
 C0582 TAY YOK BEE MADELIN
 C0583 CHIA LAY LAY LILY
 C0584 ALVIN CHONG FOOK KIONG
 C0585 SRIDHAR SRIVIDHYA
 C0586 JENNIFER CHAN SIEW PO
 C0587 TAN SIEW YIN CHRISTINE
 C0588 YAP SIEW LING
 C0589 LIM ENG CHUAN
 C0590 CLEMENT ONG KIAN MING
 C0591 ALITHEA CHOW EN-CI
 C0592 GOH SHI YUN SOPHIA
 C0593 GOH MEI XIN
 C0594 LIM CHIN YIN
 C0595 KHOR HUI YIN
 C0596 DAVID BLAKELY
 C0597 KOH YUN QING IRENE
 C0598 CHENG PUI YOON
 C0599 LIM SIEW PENG
 C0600 LEE MUN EE MANDY
 C0601 ONG PEARLEEN
 C0602 HO WAI HON RUSSELL
 C0603 TEE HUI XIN CAROLYN
 C0604 JOCELYN CHEONG LEE BOON
 C0605 PANG SIEW YUN JULIANA
 C0606 VICKINESWARIE D/O JAGADHARAN
 C0607 LEE WAN LING CHERYL
 C0608 GOH WHYIE KIAN TONIA
 C0609 HAIER DIANA BTE HASHIM
 C0610 LOW SIEW FOONG JANICE
 C0611 VERONICA MOK
 C0612 DOSHI BEENA
 C0613 SAM BOBBY ROBERTS
 C0614 IAN ONG
 C0615 NAZIRA BEGUM BINTE ROWTHAGANI
 C0616 MUELLER ALLARD ALEXANDER
 C0617 CHENG MEI HORNG SAMANTHA
 C0618 LAU CHEW LING CYNTHIA
 C0619 ONG JENNY
 C0620 QUEK HUI LIN FIONA
 C0621 NG GIM HON
 C0622 CHARMAINE CECILIA JALLEH
 C0623 BELINDA TEO HUI-JU
 C0624 ALICE HO SHING YNG
 C0625 PEREIRA CHRISSELDA ROSE
 C0626 CECILIA YEE CHING FOONG (XI JINGFENG)
 C0627 LYLE KARLA ROSE
 C0628 FENNY SUNARDJO
 C0629 MOHAMMED ISMAIL BIN ABU BAKAR
 C0630 GOWRI ARIVALAGAN
 C0631 LIEW MAN QIN JENNY YOANNA
 C0632 ESTELLE CHIA SOCK YING
 C0633 KANG PEI YIN MARILYN
 C0634 LIM ALEX
 C0635 JACQUELYN PEH GEH KUOON
 C0636 SHAIKH LOQMAN BIN SHAIKH HASAN
 C0637 SANGEETHA MARIE VICKIRAMA
 C0638 LUCY ELIZABETH LYON
 C0639 GLORIA ING NGAH FUEN
 C0640 CHUA SHAO WEN
 C0641 CHOW KIT SEEN
 C0642 NAVROOP SOOD
 C0643 SARVESH MELVIN
 C0644 PHOON WAI YEE
 C0645 ABIGAIL CATHERINE YANG WENJIE
 C0646 DANIEL NG WAI LIT
 C0647 WEE KHENG HOE VINCENT
 C0648 BJOERG BRUUNSHOEJ PLOUGMAND
 C0649 IP KWOK CHUNG
 C0650 CHUA CHIEW PENG
 C0651 POW YIH LING
 C0652 YAP HUAY KHEM
 C0653 LEE I-LIN
 C0654 SINGH GAYATRI
 C0655 MAH EE YING WHITNEY
 C0656 TAY AIK KEONG WINSTON
 C0657 CHUA SAI HUAH
 C0658 TAN YAM MEI SANDRA
 C0659 NAGOOR MOHIDEEN FATIMAH D/O ABDUL GANI
 C0660 YANG HANNING, CHARLENE
 C0661 RENJALA BALACHANDRAN
 C0662 TAN HUEY KOON YVETTE
 C0663 JOY LEONG PUI PUI
 C0664 KONG SIEW LANG GLORIA
 C0665 TAN YIUN FONG
 C0666 KOH JO LIN JOSANDI
 C0667 SIM CHIEW WAH
 C0668 LAU YEN LI YVETTE
 C0670 BOH BOON TIONG
 C0671 LION ALEXIS MEITIAN
 C0672 TAN BEE WAH
 C0673 ANA MARIA JEREMIAH
 C0674 CHIANG MING CHERNG
 C0675 POH LIAN CHOO
 C0676 SHARINDER KAUR
 C0677 YEO CHEE KEONG
 C0678 TAN BEE LIAN ELSIE
 C0679 CINDY KOH
 C0680 WEE MIN EVONNE
 C0681 ONG SAN SAN
 C0682 AMANDA TAN
 C0683 MOK SIN LAI
 C0684 YIP YICK MO CRYSTAL
 C0685 YAP CHING KEONG
 C0686 SIO WEE SYN
 C0687 SPALVIERI LAURA
 C0688 LIM MEE FOONG NELLIE
 C0689 YAP SEOW HUI
 C0690 SAMANTHA CHONG
 C0691 PRIYA VIJAY FAFAT
 C0693 SWAMYNATHAN JANANEE
 C0694 HUAN SER FEE
 C0695 JEANNE LIN WEISI
 C0696 SIN CHEI LIANG
 C0697 LOH KAR HENG
 C0698 LEE YONG SIANG ABIGAIL

MEMBERS LISTING

AS AT 31st DEC 2025

C0699 TAN LI-PENG JULENE
 C0700 DURGA DEVI ARIVAN
 C0701 LAI LIN YEOH
 C0702 ALISON DE LA COUR
 C0703 AMALINA YAHYA
 C0704 HELEN YII TECK GEOK
 C0705 KRITSAMON LERTSUWAN @ TITAYA
 C0706 LOH PUAY TZE PAULINE
 C0707 SIM SHIANG HANN ANDY
 C0708 ALVIN TAN
 C0709 TOH MUI HUA CATHERINE
 C0710 HOGAN FAITH FELICITAS
 C0711 VANESSA BURTON
 C0712 ANDREW CHONG JEE SING
 C0713 ANG HWEE HONG
 C0714 TAI YOKE YIN
 C0715 LIU SIWAN
 C0716 TAN ENG KHIM ALAN
 C0717 LEE CHOON ENG IRENE
 C0718 CHAVONNE TAN YU WAN
 C0719 GOPAL MAHEY
 C0720 MYTHILI DEVI D/O THIRUNAVUKARASU
 C0721 TAN WEE HUANG NOEL
 C0722 LEW YEAN CHEE STEPHANIE
 C0723 JANNA PAULINA LIM LI SING
 C0724 VIVIEN TAY LIH YAN
 C0725 NG BOEY HOON
 C0726 VICNESH NICHOLAS T RAJAN VICTOR
 C0727 DONAVAN TEO ZI RONG
 C0728 CHEN YONGWEI EVANGELINE
 C0729 WINT WAH KYAW
 C0730 ISABELLE ONG GAFFNEY PEI LING
 C0731 ELSIE ANN LOW SHIEW HUAY
 C0732 LIM YUAN CHUAN JONATHAN
 C0733 SATHAR DRUSILLA WYLIN
 C0734 CHEW TING VANETA
 C0735 THUM BERFONT
 C0736 ANUSUYA DORAISINGHAM
 C0737 TAN CHUE LOON MICHELLE
 C0738 LEE WEN JUN
 C0739 NG MIN HONG KARON
 C0740 JONATHAN IAN RAMCHAND
 C0741 SHALINI CHANDOLA
 C0742 TAN KIA MUI FLORENCE
 C0743 MARTIN TUDOR ELLIS WILLIAMS
 C0744 YVONNE FOO HSIAO HWEI
 C0745 LEUNG PUI MAN
 C0746 HO PUI SAN
 C0747 QI ZHAI
 C0748 KALPALATHA THIYAGARAJAN
 C0749 WAN JUNMEI
 C0750 TAN SIU YUEH
 C0751 LIM KWONG YOONG DOMINIC
 C0752 LEE WAN HUI CAITLYN
 C0753 ERNEST CHUA SWEE LEONG
 C0754 GANESHKUMARESHAN S/O SUKUMARAN
 C0755 YVONNE NG
 C0756 TANG MUI EE
 C0757 SENG JUN MIN ALVIN
 C0758 LE DO NGA LINH
 C0759 HNGOI CHIN LING
 C0760 ANNY RODJITO
 C0761 MARC ALEXANDER VENNER
 C0762 SEUNGHEE CHUNG
 C0763 LINDA ELISA VAN LAER
 C0764 ONG KOK WAH
 C0765 HONG DOU
 C0766 LEE YONG CHING
 C0767 GIAM MUN-YE CHERYL
 C0768 YEW SWEE LIAN LENCA
 C0769 WONG ZHI XIN CHARLENE
 C0771 THONG BAI HUI DENISE
 C0772 YEO BOON THIAM STEVEN
 C0773 JOY NG MIN YI
 C0774 TAN EMILY
 C0775 LOK HOI PHING JOANNE
 C0776 DESOUZA KARL FRANCIS
 C0777 NUR HAFIZAH BINTE ZULKEPLEE
 C0778 LINDA FLORIO
 C0779 BALLKEES D/O ABDUL JABBAR MARICAR
 C0780 PHYLLIS WONG
 C0781 JENNY HIQU LAN SZE
 C0782 YEO YUL CHUAN BENJAMIN
 C0783 TONG HUI WEN
 C0784 XU HAIYAN
 C0785 ZALEHA BTE AHMAD
 C0786 GAAYATHRI D/O CHANDRAN
 C0787 CARMEN LEE CHEW HOONG
 C0788 SEDRLYN YAP
 C0789 NG YIEN LUAN
 C0790 LENA SOH KWEE KIM
 C0791 ANG KENG HOE JAMES
 C0792 HO MIN CHOO
 C0793 SIM KAR PUAY CHRISTINA
 C0794 KOH BENG HONG
 C0795 KENNETH NG WEE LENG
 C0796 KELLYJO LOUISE CONEY
 C0797 SALMON CHUNG CHER CHIANG
 C0798 CHOI YOKE MUN
 C0799 YEO ZHOU ZHEN
 C0800 GOH XIN YING
 C0801 GAURANG KISHOR BHATIA
 C0802 SUKUNA SUPPIAYA
 C0803 ADELYN TAN LOON KEOW
 C0804 CHAN EARNG HAN
 C0805 EMILY NOBLE
 C0806 LEE SU CHOON
 C0807 LOW AI LEE
 C0808 NG YOLANDA YEE PENG
 C0809 TAY SIEW HUA
 C0810 PENNY QUEK
 C0811 CHOO NELSON
 C0812 LIM TING ANN KENNY
 C0813 CHRISTINE CHOO SU-MEI
 C0814 KEERTHANA MOHAN
 C0815 PARVIN KAUR SANDHU
 C0816 KEVIN OW MOH HUAT
 C0817 CHNG WINNIE
 C0818 FAJARIAH BINTE SABAN
 C0819 HELEN LAU KA PIK
 C0820 RODNEY TAY
 C0821 QUEK WAN TING
 C0822 WONG YUN YI
 C0823 ONG BEE YONG
 C0824 CHRISTOPHER FONG
 C0825 GIAN PRAKASHWATI SHARMA
 C0826 LIM CHENG HUAT
 C0827 CAROLINE HO

MEMBERS LISTING

AS AT 31st DEC 2025

C0828 TUI GWENDOLYN
 C0829 DODANI KIRTI PRAKASH
 C0830 KOH LAY NAH
 C0831 WANG MAY SHAN PAULINE
 C0832 LEE BETTY ANIZAH
 C0833 WONG YIH LING ELIN
 C0834 LOW MEI JING
 C0835 HAROLD PETER HEE ROBERS
 C0836 VERONICA JACOB NG SIEW YIM
 C0837 LUAN LING
 C0838 YAP HUI TING
 C0839 OLIVER SILVAN ACKERMANN
 C0840 LI YAHUI
 C0841 QUAH SIANG HUI
 C0842 CHUA SI XUAN ASHLEIGH
 C0843 SHANMUGAPRIYA D/O VIJAYAN
 C0844 CHAN TIONG YAN
 C0845 APARNA SANGA
 C0846 LIM CHIOU YUIN
 C0847 TAN JEANNE KIRK
 C0848 CHING YANG WAI
 C0849 SENG HKAWN SUSAN
 C0850 JOEY CHAN KAI LI
 C0851 WONG HUI YU
 C0852 LIM POH CHENG
 C0853 GEETIKA MALHOTRA
 C0854 CLAIRE LEONG WAI YARN
 C0855 JOYCE LOW WAI CHING
 C0856 TOH HONG HWEE
 C0857 P VISHNU
 C0858 MARIYA NIKOLAEVA ANGELOVA
 C0859 TAY KHENG WEE IVAN
 C0860 CHNG HUI HONG MAGDELENE
 C0861 POH LIN
 C0862 LEE BEE KOON IRENE-RUTH
 C0863 YENG AIK LIANG
 C0864 FOO YIN DIN
 C0865 LIU XING
 C0866 NG WEI WEI
 C0867 TIMOTHY LEE
 C0868 BIJAMATI PERIYAL PAREATUMBEE
 C0869 CHAN WAN QING
 C0870 CHUANG WEI JIAN BENJAMIN
 C0871 YANG XIAOHUI
 C0872 NORAINI ABDUL HAMID ABDUL WAHAB
 C0873 NICOLE TANG SEET YEN
 C0874 LOW LIN YI LYN
 C0875 NORMAH BINTE HASAN
 C0876 ELAINE SEAH ZHU HUI
 C0877 NOORAINI BINTE SALLEH
 C0878 TOH XIAOPING
 C0879 NADIAH BINTE ZULKIFLI
 C0880 LAM MAI LENG
 C0881 HO CHOI YEE IVY
 C0882 ALEXANDRA DANIELLE BOHNEN
 C0883 SHRIYA VASHISHT
 C0884 OH CHUI HAR CRISTIN
 C0885 TAN SHIH YONG GORDON
 C0886 JOYLYNN YEO SOK CHING
 C0887 TAN TZE HOW KELVIN
 C0889 JANIS BUGANTE DELARIMAN
 C0890 WINNIE YIP WING SEE
 C0891 SHIFAN HU
 C0892 HENNY PRAYOGO
 C0893 MAIMUNAH MOSLI
 C0894 SUGANTHI D/O BALAKRISHNAN
 C0895 TAN VIN SIE
 C0896 JULIANA POH SHI MIN
 C0897 CLARICE NG SHU YI
 C0898 WEE GEOK CHING DIANE
 C0899 LAW XIN NING
 C0900 GLENNYS TAN JIA EN
 C0901 YAP KIAN HONG AMOS
 C0902 IYER NALINI VENKATACHALAM IYER
 C0903 HO PEIYING DAWN
 C0904 SAMUEL LUM MING JIE
 C0905 IE YAYAH FARIDA
 C0906 HUANG WUXIANG JASON
 C0907 KHOR HAN MEI
 C0908 SHARON XIE JIA HUI
 C0909 SUE ANNE HAN
 C0910 LIM HAO CHONG, JOEL
 C0911 ANTONY TAN BOON TIONG
 C0912 DENNIS GOH JIONG YU
 C0913 SUKVIR KAUR D/O ANGREZ SINGH
 C0914 EMANUELA KOCH
 C0915 AUDREY NG HUI SIAN
 C0916 MUHAMMAD SYZWI BIN ABDUL SHUKOR
 C0917 KWEK SHU YI VICTOIRE
 C0918 FOO JOCK LENG EMILY
 C0919 LEE JING WEN
 C0920 ETHER KUM YU LING
 C0921 KOH YONG HUI ELIZA
 C0922 MANJU ASHOK MELWANI
 C0923 CHUA MING HWEE SOLOMON
 C0924 EILEEN CHUA CHIEW HOON
 C0925 SHILA D/O SARVEISWERER NAIDU
 C0926 RUCHIRA RAJ
 C0927 CHELSEA WOO YUAN EN
 C0928 TAN SUE-ANN
 C0929 SIMA BTE TAHA
 C0930 EVONNE LEK WOON ING
 C0931 LO TING FUNG
 C0932 SHARON LAM
 C0933 HO KIT CHOY
 C0934 CHANG CELYNN
 C0936 LEE SIAT CHUN JEANNIE
 C0937 KENNETH HO JING HUI
 C0939 KENNETH KWA
 C0940 ONG SI MIN STELLA
 C0941 AVIS MARIA FONTAINE
 C0942 YUEN CHIN @ OU-YANG CHIN
 C0943 GARY OW
 C0944 HAN SHIRLEY
 C0945 CAROLINE KANTHIMATHI D/O MURUGAN
 C0946 GOMEZ DENIECE EDWINE
 C0947 CATHERINE MELLOR
 C0948 DOROTHEA YEO
 C0949 GOWRI THAMOTHARAN
 C0950 CHAN JIA MIN
 C0951 DAWN SIM MEOW CHENG
 C0952 PARVIN SINGH SACHDEV
 C0953 LIN JING
 C0954 KELANA IZRAC BIN KAMID
 C0955 ANUSHA BALASINGHAM
 C0956 NASRIN SHAH BEEVI D/O MEERASA
 C0957 CHEW HUI YEE
 C0958 TANG YUIN KAY

MEMBERS LISTING

AS AT 31st DEC 2025

C0959 TEO KIA LING JESLINE
 C0960 JAMIE SUSIE THOMAS
 C0961 LEE KAH CHIN PERONNA
 C0962 GERALDINE ONG CHOON GEK
 C0963 BIBI JAN BINTE MOHAMED AYYUB
 C0964 SOFYA AL-HAQ XIA JIAMEI
 C0965 NG BEE LING ISABELLE
 C0966 KATHLEEN CHONG PHUAY YEOK
 C0967 TAY YITING
 C0968 CHEW HUI KEONG ANDREW
 C0969 LORI ERCAN
 C0970 YU FOONG EE
 C0971 SAVRINA HSIU-YIN KAUR SHAHI
 C0972 BRIAN OOI
 C0973 JAMES CHONG
 C0974 VANNIE WU WEIQI
 C0975 EILEENA LEE
 C0976 PHUA SHI TING
 C0977 TAY SU MIN BRENDA
 C0978 ER WAN LING
 C0979 CHOO SHI PING DIANE
 C0980 JACQUELINE LEONG YU
 C0981 CINDY TISDALL-MCPHEE
 C0982 THAMARAI D/O PALANIYAPPA
 C0983 NG SU FEN
 C0984 SIAUW ANNA
 C0985 LI LIANG
 C0986 TAN KAH MIN
 C0987 LIU XIN
 C0988 NG HUI JUAN
 C0990 TENG LING
 C0991 HO WAN YENG
 C0992 ALEXANDER PRIYA JEAN
 C0993 TAN BI LING
 C0994 FREELING DUKE RUDY
 C0995 ALEXANDER DHAMMA TEH WEN YENN
 C0996 GOH YI LIN EVELYN
 C0997 YEOW BENG ZHEN
 C0998 RUTH KOMATHI THAYA NEEDI
 C0999 LATA DEVI D/O KRISHNAN
 C1000 JESMIN TAN YOKE LIN
 C1001 CHEW WAI KUEN
 C1002 FU DANFENG
 C1003 ONG ENG HOON
 C1004 MARY CHEONG POY KOON
 C1005 CHEN JING
 C1006 BARRY YEO YONG SIN
 C1007 TAN EN HUI HANNAH
 C1008 LYDIA TOH JIA HUA
 C1009 IRIS OR SIEW YONG
 C1010 CHARMAINE TANG SOOK LENG
 C1011 RAPHAEL ZHANG JIEQIANG
 C1012 ANDRE TAN WEI HAO
 C1013 PATRICIA HO PECK HAR
 C1014 MARTINE HILL
 C1015 DEBBYRINA DE THOMAS
 C1016 TAY HUI PING, PHYLLIS
 C1017 LIEW OOI HIONG @ LIEW WOI HIONG
 C1018 YEONG THIM CHUEN MICHAEL
 C1019 TEH YANG YANG
 C1020 CELIA XIULI SHI
 C1021 JAYACHITRA D/O BALASINGAM
 C1022 LIO CHIN LONG BENJAMIN
 C1023 EZZAT BIN MD MUSTASAR
 C1024 PUA SHU ZHEN
 C1025 ZHENG KAIYUN
 C1026 RENA CHUA YAR LING
 C1027 QUEK HUI BING
 C1028 MANIMUTHU MARY
 C1029 THONG SU-XIAN JEANETTE
 C1030 NURUL FAZZAH BINTE MOHD AZMI
 C1031 ZHENG HANYI
 C1032 YVONNE CHAN WAI MUN
 C1033 EDWARD HOON MOW CHIN
 C1034 JEFFREY PANG KHIA KEI
 C1035 POON SWEE HAR
 C1036 JASMIN THARA CHONG
 C1037 ANG KIAN CHUAN
 C1038 NICOLE TAN LI TING
 C1039 CLARA LEE HWEE TING
 C1040 TEY WEE KUOK
 C1041 CHAN SWEE LIM EVELYN
 C1042 CHIA ZHANG YUAN NATHANAEL
 C1043 MARIA ANNA PANOUSAKI
 C1044 CHIA GEK SHAN CHERYL
 C1045 WONG SIEW NING
 C1046 LIM YI PEI SANDRA
 C1047 HARDY SHEYLA
 C1048 JEANA WONG CHIUN TSIN
 C1049 OW KOK KIAT (OU GUOJIE)
 C1050 QUAN YEN LI VALERIE
 C1051 CHEW WAI YEE
 C1052 TAN PAULINE
 C1053 SMITHA VENKATESH
 C1054 KOHILA MANI MRS KOHILA GOVINDARAJU
 C1055 TIONG JUEN TEIN
 C1056 NATASHA ANNA MCCARROLL
 C1057 BRADLEY MATTHEW ROZARIO
 C1058 AZLITAH BINTE JAFFAR
 C1059 AW YONG HUI YAN
 C1060 KWOK CHUN KWAN ANSON
 C1061 MELISSA TEE KYE HSIN
 C1062 TAN YI SHAN
 C1063 EDNA MARIE NG SHUHUI
 C1064 SYAWAL HUSSAIN BIN ABDUR HUSSAIN
 C1065 NURULAIN BINTE RAWI
 C1066 DEBORAH KOH YU XUAN
 C1067 LEE WAN TING, ADELINE
 C1068 KARAN GURNANI
 C1069 MUHAMMAD DANIEL ASSADULLAH BIN YAKUB
 C1070 CHARLES NEW
 C1071 SEAH LIN LIN
 C1072 LEONG TZE CHOONG JAMES
 C1073 TAN HWEE SOON KELLY
 C1074 LIM SZE SZE JOUIE
 C1075 ZHENSHAN ZHONG
 C1076 NACHUM KAPLAN
 C1077 GABRIELLE DAI
 C1078 CINDY LOW
 C1079 LIM HUI KEI
 C1080 CHIN WAN TENG
 C1081 CHIA XIN NI
 C1082 TEEROU SHA MOOTIN SORNUM
 C1083 MUHAMMAD HAIRIL BIN MOHAMMED HANIFF
 C1084 LAM CHOON KHEONG EDMUND
 C1085 LIN ZEE LING
 C1086 TEO JUN RONG
 C1087 TRISHIA NG YEOK TENG

MEMBERS LISTING

AS AT 31st DEC 2025

C1088 TIONG CAI JOO KAREN
 C1089 TAN WEI FANG
 C1090 JEANETTE HOUMAYUNE
 C1091 OH CHING FEN (HU JINGFEN)
 C1092 WANG YOUQING, TULIP
 C1093 ANGELA HO NYUK YEN (ANGELA HO FERNANDO)
 C1094 DAWN YAP TIEN MING
 C1095 ATIKA SHUKLA
 C1096 TAY JIA-MIN AMANDA
 C1097 ELENA HO
 C1098 PAVITAR KAUR GILL D/O HARBHAJAN SINGH GILL
 C1099 ANG LE SHAN

PROVISIONAL CLINICAL MEMBER

D0006 BALAJI SUBHASHINI
 D0023 TAN SOOK KHUAN HELENA
 D0028 NG CHAI HOON ELSIE
 D0030 LEE TECK MING
 D0034 TAN ENG CHOON
 D0046 SURIYAVARMAN JAGADIS
 D0050 JOSEPH MARIA NATHAN IRUDAYAMARY
 D0053 DESOUZA MERLE DOLORES MERLE
 D0057 CHUA JOO LENG
 D0070 NONIS MACNEU MARTIN
 D0072 JASON NG TIO WEE (HUANG CHAOWEI)
 D0076 WONG CHOOI LING
 D0077 LEE OI WEI
 D0081 GOH LOH NAH LUONA
 D0086 SIM MUI LUANG GLADYSS
 D0092 SINGH LAXHMAN
 D0097 TAN NYUK CHOON FLORA
 D0098 SOENARYO YULIA
 D0102 LIM NGEE HUI BRENDA
 D0109 BONGARD SIMON JOHN
 D0118 ESENDEMIR SEKHON BERNA
 D0123 WOON CHIN TING
 D0124 KOH SIEW LIN ESTHER MEREDITH
 D0129 CHEN JING
 D0130 S. RAVEENDRAN
 D0134 SITI HASLINDA BINTE BADUL KARIM
 D0142 QUEK HWEE KIAN LILIAN
 D0150 SURAYA BINTI ALI
 D0151 WOON CHIN TING
 D0156 LIM DAHLIA
 D0163 LIN ZHIWEI BERNARD
 D0165 ONG AI LIN IRENE
 D0166 HOON MEI PENG JOANNE
 D0169 JAIN SHRUTI
 D0175 ONG BENG HOW STEVEN
 D0179 SEAH CHIEW KWAN
 D0181 GOH GEOK BEE SALLY
 D0187 ANG KOK POH ANDY
 D0188 WENDY KOH KIM LIAN
 D0190 SHAH KAVITA
 D0195 NIEDERBERGER DANAE ALLEN
 D0201 LAI MEI CHIN
 D0203 NISHA NARENDAR JHANGIANI
 D0210 PEH BOON LI JANICE
 D0215 RYAN JULIE DIANNE
 D0216 ONG HOCK LAM JOHNNY
 D0225 CHUA HUI YING

D0228 WONG YEONG TAY
 D0231 CHOW YEE LING
 D0232 LIM AI LEEN
 D0238 YAP MEI MEI
 D0241 CHA SIEW YOONG REECO
 D0244 SWEE FONG KHENG, JOAN
 D0245 SYJUCO MARIA MILAGROS
 D0246 SOON KIANG HONG DAVID
 D0247 OH ODELIA UTAMA
 D0252 GOH MUI WAH
 D0254 CHUA JOEL
 D0258 NGUYEN THI GIA HOANG
 D0262 SEET PEK HUA MARIA BABARA
 D0265 YEOH YUFEI
 D0271 YEO HUI YING, JAIME
 D0273 MARTHA LEE HWI CHERN
 D0275 ONG GEORGE TZE-WEI
 D0277 LIM ALEXIS
 D0278 LIU RONGWEI SHAUN
 D0279 MOK ZHIQIANG GARY
 D0281 TAY SWEE HONG
 D0284 CHEW WYE MUN SERENE
 D0289 SIM BOON WEI
 D0291 CHUA WEI WEI CALIN
 D0292 CHOO MADELINE
 D0293 CHING AMY LEE HOON
 D0294 HEILICZER ALLISON
 D0296 PARK SEONG-YOO CHRISTINA
 D0299 KOH HUI-MIN JOANNA
 D0302 WONG WAI MUN
 D0312 FATHIN AFIFAH BINTE MOHAMAD KAMBALI
 D0313 PANDITHAKORALAGE BIMALI
 D0315 ESTHER KOH GEOK LIANG
 D0320 CHERN LYE CHUA
 D0322 TAN TECK KOON
 D0323 VICTORIA RACHEL HARRIS-LITTLE
 D0325 BENJAMIN WONG YEW FEI
 D0326 HAZEL YEO CHAK ENG
 D0327 BARTHOLOMEUSZ RUWANI ANITA
 D0331 LIM JIAYI
 D0347 SANCHIA PAQUITA HUNT TOWLE
 D0349 TONG MIEN YIK
 D0352 TOH IRENE
 D0353 ONG MUI HWA
 D0354 TAY SOCK KHENG
 D0363 LEE KIM GEK MARGARET
 D0367 QUAY HONG MUI PEGGY
 D0370 NELLY DARMALI
 D0371 AISHA SHEHERYAR RASUL
 D0372 TAN- LIM HUNG LEONG KELVIN TITAN
 D0374 ATHITA BUA-IN
 D0383 SONG PIC YOKE PEGGY
 D0389 KEVIN DUNK
 D0391 ANTHEA CHUA SEI LING
 D0392 CHEN ZI LING CHERYL
 D0395 HERNIE YANTI KHAMES-MARTIN
 D0398 NITI GUPTA
 D0408 PANKURI GOEL
 D0413 SONA PRANAV KUMAR
 D0415 TAN TZE MIN NIGEL
 D0425 JACINTA TAN POH JOO
 D0428 MANOHARAN G KARTHIGASU
 D0429 RASHMI KUNZRU
 D0430 BHAAMA MANIVANNAN - RAMASWAMY IYER

MEMBERS LISTING

AS AT 31st DEC 2025

D0432 KOH PERK KEE PEGGY
 D0437 ANG KOK SIONG FREDERICK
 D0440 MORTEN JENSEN
 D0443 CHOI KIN MENG
 D0446 TANG MAY SEI MARGARET
 D0448 NEO KIM CHWEE STANLEY
 D0451 SOO KAH YENG CINDY
 D0455 SVETLANA FROLOVA
 D0456 YEO KIA KIA
 D0458 ANG PUI SAN EVINA
 D0461 FERNANDEZ CORDELIA AUDREY
 D0464 ZAHIRA BTE MASAUOOD AHMAD
 D0466 JOSEPH QUEK JIE HUI
 D0468 JAHABHER NACHIYA BINTE ABDUL WAHID
 D0475 WINNIE GOH
 D0481 LIANNE TUNG YU EN
 D0482 TAI SIEW NGEE
 D0484 CHUA SHAN YUAN EDWIN
 D0490 JAMES DAVID BUXTON PASHLEY
 D0495 SONIA REBEKAH LOUIS
 D0496 TAN HWEE PENG DERANCE
 D0498 REKHA PINKESH NAHAR
 D0499 LIN WEILIN
 D0500 BALASUBRAMANIAM S/O GARUNAHARAN
 D0501 LIN TING
 D0502 NAAZ FATHIMA
 D0505 ONG YONG HUAT DANIEL
 D0509 YEO TZE-WI
 D0510 CHITRA R SAHGAL
 D0512 JOESAPHINE SHALENE KHANISEN
 D0515 YOLANDE FERGUSON
 D0516 LEE YEN CHING
 D0518 RANA HENU
 D0520 WONG YENG YI
 D0521 LIM YEN PING JOYCE
 D0529 GLORIA TAY CHUI LIN
 D0530 CARLA JULIAN WANGSAHARDJA
 D0531 JYOTHI KOSARAJU BOSE
 D0532 CHRISTOPHER RAJAPPAN JAMES
 D0536 SRIPRIYA SUBRAMANIAN
 D0538 ARZEEN ANSAR
 D0539 SEET PEK HAR BELINDA
 D0540 WANG SUWEN
 D0541 QUINTA LEE YING YING
 D0542 LILY F. LEE
 D0544 CHNG YEE CHUAN
 D0545 TSURUOKA YURI
 D0546 MUHAMAD HAIKEL BIN MOHAMED
 D0547 INGRES
 D0554 LIU I-HSUAN
 D0556 ABDUL HAKIM BIN ADZHARI
 D0559 LEONG YONG CHEN RONALD
 D0561 CHUA MIN SIAN
 D0562 PRAGATI PRITMANI
 D0563 ANNIE LIM
 D0566 VAISHNAVI HONNAVALLI
 D0567 LIN XIUXIA
 D0576 TAN HAN CHUNG
 D0578 NOORYANTI - YAN YAHYA
 D0579 KARTHIKEYAN MANIMEKALAI
 D0581 ROXANNE YEO
 D0583 CLIFTON LERON TOKOARA
 D0584 GOH SWEE KIM AILEEN
 D0590 KRISTI STEWART MACKINTOSH
 D0591 CHEW JUN LI IONA
 D0596 JAIN ADEETI ABHINEET
 D0598 ROBERTSON ROSELYN REBECCA
 D0601 PIGAR ASESANI MAHDAR
 D0606 CHAN WEI TENG
 D0607 CHEN YI-QIN
 D0609 PEARL TAN YU XUAN
 D0611 CHIN CHUAN FEI
 D0612 SARANN JOHNSON
 D0614 NATASHA KOTTEGODA-BREDEN
 D0615 SHRUTI VERMA
 D0618 LIM SHEAU LING
 D0620 T SARANIAH
 D0622 FEI HA TAI
 D0624 TOH HUI KIONG
 D0625 AUDREY LEONG YOKE LENG
 D0628 MARATHE MANASI GAUTAM
 D0629 OH HUI HONG REBECCA
 D0632 SEE YU TING
 D0637 SOH WEI LING SARAH
 D0642 POH AI CHOO
 D0645 GERMAINE TAN
 D0646 JANET GAY
 D0648 CHAN HAO HUA
 D0651 WILLIE SOH
 D0652 LISA OAKE
 D0653 QUEK SIAU LENG AARON
 D0657 CHERIE LOH
 D0662 CHAN JIN MUN ERIN
 D0663 WONG OI LEE SUSANNA
 D0667 RACHEL CHAN WEN YEU
 D0673 CHENG WEI
 D0674 CHEUNG KA YING
 D0678 PRIKSHAT PAL SINGH
 D0681 ANG JIA RUI
 D0682 LAI CHUNJI
 D0683 TOH HUI LING SANDRA
 D0685 PREMA GOPAL
 D0686 JO LIM SZE HUI
 D0687 LIANG XINGNYU
 D0688 GOH GEK LANG CYNTHIA
 D0689 MOHAN SHALINI
 D0692 POH MAN WEI
 D0695 LEE LAY KAR LENA
 D0697 NUR BINTE ADAM AHMAD
 D0699 LOW SOCK GIM ANGELIA
 D0700 HENG SU YIN
 D0702 GUO DANDAN
 D0704 NYO WEI SHENG WILSON
 D0706 LOW SOO TECK BENNY
 D0707 ALISON LAI CHING HUA
 D0715 PNG SZE CHOONG BRENDA
 D0718 TAN SWEE LENG
 D0719 KARA LEE-WONG HUI
 D0720 KOH MIN LI EYVON
 D0721 NAUMA SHEZAD
 D0724 DEIRDRE LIM SEOK GIM
 D0726 SUSAN MATHEW
 D0727 MALTRISH KAUR
 D0729 SEOW SIEW ENG
 D0730 CHEN MENG
 D0735 NANCY TANDELA
 D0736 BHAN PARUL
 D0738 JUMH TANTRI

MEMBERS LISTING

AS AT 31st DEC 2025

D0741 ABIGAIL THIO LI MIN
 D0742 SUHAIMI NURSHAFIRAH
 D0743 MUHAMMAD DANIAL BIN AHMAD SUFYAN
 D0744 YEE POH LING
 D0745 JOSEPHINE WANG LI LING
 D0747 MUHAMMAD ABU SUFIAN BIN HANAFI
 D0748 SUDHA GANDHI
 D0750 TEO EE LENG
 D0753 THOMAS TOH TECK TAI
 D0754 JESSICA OH LI MIN
 D0758 TARIN CHOUDHURY
 D0760 DOROTHY THEODORA WONG MEI LIN
 D0763 ALYSSA ROSE FERNANDEZ
 D0764 KUDDAKACHIRA MERLYN JOSEPH
 D0766 WONG HUI CHIN ROSALIN
 D0767 LIM SIOW YAH
 D0768 AMY MAGDALENE ONG WEE PING
 D0770 CHIA MEI MEI REBECCA
 D0772 HELEN MARGARET SNOWBALL
 D0775 FAITH LEE SOO FENG
 D0776 NG HAI CHOO CECILIA
 D0777 NG JIAQI JACQI
 D0778 CHUA TOK SHENG
 D0779 AMRUTA PATKI
 D0780 SHARON LYNNE ATHERTON
 D0781 TSANG MING HWA THOMAS
 D0782 ANGELINE YEOH CHIN TINE
 D0783 LIM LI YI NICOLE
 D0784 WOO MANN-LI GLENN
 D0787 WAN MAY YAN, PRISCILLA
 D0788 CHAN SIU LING
 D0789 NG YING KEOW
 D0790 CHERN HUI YING
 D0791 CHIN YOON MEI
 D0793 LIM JIAN WEN JASPER
 D0794 DANICA TOH SHU YU
 D0795 ANITA SHEELA FREDERICK
 D0796 JAMES ABRAHAM
 D0797 CHUA XIN YUAN ANDRAL
 D0798 SOCK HONG SHARON NG
 D0799 SURIYAH BINTE MOHAMAD RAZIP
 D0800 TEJAL SAPRE JADHAV
 D0801 TAN SONG ERN
 D0802 LIM SHIHUI CANICE
 D0805 LOH YI XIN
 D0806 WENG NING
 D0809 SIM HWEE PING
 D0812 SOH CHEE SENG
 D0813 FROIS CHERYL MARIE
 D0815 SHARI TAN SAN-HU
 D0816 HELENA LIM SEEN-AI
 D0817 HINA KAZI
 D0820 KIM SOU MIN
 D0821 AIMEE JOHNSON-GODDARD
 D0822 ADELIN CHANG SEE MUN
 D0824 EDMUND SHUAN FOO
 D0825 NG SUAN CHIEW
 D0827 CHU YIN CHAN JASMIN
 D0828 LEE PAI LENG
 D0829 ALEXANDRA OH
 D0830 ONG HUI CHEN
 D0832 ZHANG JIE
 D0833 MARA PAOLA HUBANA
 D0837 BELINDA WAI KWAN NEIDHART-LAU
 D0838 ROSSARA BINTE AB JAMIL
 D0839 YAP WEI LI
 D0840 KOH SIEW ENG
 D0841 FELISE LEE LI PHENG
 D0844 CHAN CATHERINE YING SAU
 D0846 HO WAI CHENG
 D0847 VICTOR LUCAS
 D0849 LIM SWEE CHEN
 D0850 TANG YING JODY
 D0851 TAN WEI JIE
 D0852 WONG PEI FEN
 D0853 DIANA PETROV
 D0855 SEET LING SHI JAZLYN
 D0857 FOONG WAN YING DEBORAH
 D0858 CINDY GAN
 D0860 MADINAH BEGUM BINTE RAHMANSHA
 D0861 JACQUELINE LAU HUI YING
 D0863 SHERMAINE GABRIELLA TAN TECK YONG
 D0865 NANDINI GYAN NAGPAL
 D0866 JARIYASUWAN SUTTIDA
 D0867 ASHANITA APPALANAYADU
 D0872 THAMARAI RANJINI D/O VEERAPPAN
 D0874 OH HUI CHENG YVETTE
 D0875 TSOLOVA-NIGOGHOSSIAN VIOLETA
 D0876 TAN AN QI NICOLE
 D0877 ONG PEI JIA CHARMAINE
 D0878 NUR AMIRA BINTE MOHAMAD IBRAHIM
 D0879 KAYDEN PERERA
 D0880 AUSTRAL CHANG CHIN LI
 D0881 SYEDA ZEHRA ZAIDI
 D0882 IRENE CHOO LAY MIN
 D0883 EDDY OOI SENG HUA
 D0884 MA LAI SA
 D0887 LETHA KAVERI
 D0889 SHERWIN ESCALONA REYES
 D0892 ALICE CLOTHIER
 D0894 CHIA YI LONG
 D0895 SAIRA SULTANAH D/O FERAZ AHMAD
 D0896 VALERIE ISABELLE MOTET
 D0897 AISYAH BINTE ABU BAKAR
 D0898 DANIELA ONG DEHUI
 D0899 WEI WEI
 D0900 MAHEEN HAMID
 D0901 SNG SIEW LENG
 D0902 NG SHAN HONG LILY
 D0903 TOH JIA YUN ARIS
 D0904 TAN GEOK LAN (JODY)
 D0905 SIAU CHENG CHIANG JULIAN
 D0906 HO XUE TING CHERIE
 D0907 LIM SHU LEI ELAINE
 D0909 CHEW HOCK MENG
 D0910 TEO MAY CHING VANIA
 D0912 FAITH VIGNESWARI AHINO
 D0913 WONG CHEE HUEY
 D0914 SHERSTYUK JULIA
 D0915 CHOY WAI KEONG JEREMY
 D0916 ANNA WIHTOL
 D0918 ANGELINE TAN JING FANG
 D0919 YASMINE NEO
 D0920 ESTHER OON YEE WEI (MRS ESTHER OON-BYBJERG)
 D0921 PRIYAHNISHA NOORULLA
 D0922 GRAEME IAN KHALIL
 D0923 U CHIN WEI
 D0924 HSIONG EN QIANG MARK

MEMBERS LISTING

AS AT 31st DEC 2025

D0926 SIM KOK LIM
 D0928 GERALDLINE CHUA MEI PING
 D0930 SHERENE LOBO
 D0931 HO CHUN EN EUNICE
 D0932 BAGESHREE RAGHUVEER KULKARNI
 D0933 TAN MEI SEE
 D0934 CHO AI LIN
 D0935 MARIA MASHA PEREPELOVA DONNELLY
 D0938 JOANNA TAN GUAT SIAN
 D0939 ROHAN SUPPIAH
 D0940 SER MU YING
 D0941 CHEONG SHEN-LI EMIL
 D0942 SUBASHINI DAYALAN
 D0943 YANG ZIJUN WYNNE
 D0945 VANI SAMINATHAN
 D0947 GERALDINE NG ZHI XIN
 D0948 JOYOTEE RAY CHAUDHURY / JOYOTEE AJITKUMAR BANERJEE
 D0949 MONIKA VERMA
 D0950 LEE JIA JUN BENJAMIN
 D0951 YOKO MORISHITA REDDY MUNIANDY
 D0952 SUNNY LOH KIM SOON
 D0953 TEH HOOI JOO
 D0954 YEAK SIEW LUM
 D0955 SHALINI DEVINDRA
 D0957 UMA AHALYA D/O PURUSHOTHAMAN
 D0959 NG EE LUI LYNNETT
 D0960 YONG LEI FONG LOUISE
 D0961 PREETI BHATI
 D0962 ELIZABETH TEO WEI'E
 D0963 PAUL JAMES SAGE
 D0965 SHIRLEY HAN
 D0966 LEE LORLING
 D0967 JASMIN TSE LI MING
 D0968 ROUSSEAU MAGUELONNE
 D0969 CATHERINE LYE SOOK YIN
 D0972 VYJAYANTHIMALA
 D0973 LIM SHAN SHAN
 D0974 NG I PIN
 D0976 ISABELLE SURIYA CLEMANT SOOSAY
 D0978 CHEN TIN SAN TINA
 D0979 GLADYS CHAN HIANG YING
 D0980 TEO XIAO TING
 D0982 YONG SU LIN PRISCILLA
 D0983 GAVIN GOH SIAN TANG
 D0984 SANDRA TAN MEI YEE
 D0985 JOEY LIM WEI PIN
 D0987 LIM LAY LENG
 D0988 LIOW JUN WEI
 D0990 SHUBHASHREE SEN
 D0991 TAURUS YEO YEN PENG
 D0992 LYE HANYU
 D0995 KONG YUIT HOE CHRISTINE
 D0997 LEE JUN HAO MARCUS
 D0998 KONG TIAN YI
 D0999 SHANTHAPIRIYA D/O JEYARAMAN
 D1001 HO MEI WAH
 D1002 ZAINAB SHAUKAT
 D1003 HANUM BINTE AHMAD
 D1005 WINIFRED LING SUI FUNG
 D1006 JIN JING
 D1007 LEONG CHUN YU
 D1008 LIM HENG LEONG PAUL
 D1009 TEOH CHENG PING
 D1010 IRIS TAN TECK MEIN
 D1011 ONG YING YUNG
 D1012 ROSLINDA BINTE MOHAMAD NOOR
 D1014 SUMATHI BOBBY GANESAN
 D1015 LEE YING YING FLORENCE
 D1017 FERNANDA MAURER-STROH
 D1018 ANDERSEN DIANDRA STEPHANIE
 D1022 TEIW HUI QI
 D1023 LIM GEK CHING
 D1024 CHNG MAY LEE
 D1025 YANCHAO HUANG
 D1026 LAURA VOTEY CHAUDHARY
 D1027 WA WA AUNG
 D1028 JODIE TAN QIU YU
 D1029 SARASVATHY BALU
 D1030 MONISHA MANOHAR
 D1031 HO KIAT YEE JOYCE
 D1035 TEO KIM HUEY MRS KONG KUM CHEONG
 D1036 KOH JIN KIT
 D1037 YAMINI YADAV
 D1038 SASHA JAVADPOUR
 D1039 LEONG HUI JING
 D1041 SRI MEGAH
 D1042 MARJORIE KEE AIK NGEE
 D1045 NG BOON EE
 D1046 LAEL PANG
 D1047 OOI XUE LI SHERRIE
 D1049 WANG SHULING
 D1050 SUNIL KUMAR BAGARIA
 D1051 SEAH WEI NA LAVINIA
 D1053 RAQUEL FABIENNE ANG RUI QI
 D1054 YU YUE
 D1055 NADYA TAN
 D1056 PAUL YEE HAN YUEN
 D1057 GLADYS HU
 D1058 SITI ZALEHA BINTE ABDULLAH
 D1059 JEANNETTE QHEK JING TING
 D1060 HAN SHU MIN
 D1061 RACHEL LOUISE SIM-YUE FRANCIS
 D1062 CHARISSA MARIE NAIR
 D1063 KARIN NG YI-LYN
 D1065 FOO WEN HWEE
 D1066 TAN SHIRU ADRIEL
 D1068 CHUI JIA EE
 D1069 AARON CHAN KONG TUCK
 D1070 CALISTA CHU YU
 D1071 HOW SHI MIN
 D1072 SAJITHA PRADEEPKUMAR
 D1073 ANGEL CHAN
 D1074 WIING LIU PEIYING
 D1076 LIM SHI MIN ALECIA
 D1077 LEE CHUN YEOW SIMON
 D1078 YANG ENLING HANNAH
 D1079 SOH CHURN MING STANLEY
 D1080 DORIS LIM WONE HIANG
 D1081 KONG PUI SAN JOANNA
 D1082 FRANCES WARD
 D1083 LIM SHI
 D1084 HO HUI YIN SANDY
 D1085 TEO PEI TZE
 D1087 LEE ZONG HAN RYAN
 D1088 YANG JULIANNE QIULING MA
 D1089 SAMANTHA ADELINE CHAN MUN SUN
 D1090 CRYSTAL HONG FENGHUANG
 D1091 LIM JIA HUI LEVIA

MEMBERS LISTING

AS AT 31st DEC 2025

D1092 CHENG CHING CHING
 D1093 IRIS KUEK MAY HUA
 D1094 MUI JUN MIN BRENDAN
 D1095 HAN QIAO YING AMANDA
 D1096 KOH KWANG WEI
 D1097 HO KIM LENG LESTER
 D1098 GALISTAN HOMER SHAN
 D1099 AANCHAL MALHI
 D1100 BHAVNA GAHLAUT
 D1101 DIONG HUEY SY
 D1102 CHEW BEE LENG
 D1103 NAOMI MONISHA LOURDESAMY
 D1104 LAKSHMI BAI M VANUGOPAL
 D1105 SONYA NAIR
 D1106 TAN WEI JIAN DERICK
 D1107 SUTHESHNA KODEESWARAN
 D1108 HO YOON KHIONG
 D1109 GREGORY HO WAI SING
 D1111 A PREETHI DEVI
 D1112 KOH TONG WEY
 D1113 KOH BAO LING (XU BAO LING)
 D1114 TANG WEN-TIAN VANESSA
 D1115 YANG XINJIA
 D1116 PENG HUI
 D1117 VIDHYA VENKATASAMY
 D1118 LIONEL YAN TIAN YU
 D1119 NG CHONG YI TIMOTHY
 D1120 SANDHYA SAJEN ASWANI
 D1121 CHUA WEI WEI
 D1122 NG QIXUAN
 D1123 LENA KOH
 D1124 MICHELLE MILYARTI WANTASEN
 D1125 TAN LI HON KENDRA
 D1126 CHIA JIA LING TIFFANIE
 D1127 RACHEL LIM SZE YING
 D1128 PANG SU-MEI JANE
 D1129 NG JING SHAN MAY
 D1130 GERMAINE LIM HUI YI
 D1131 LEE YOU FANG DENISE
 D1132 KOH SEE HUI ROXANNE
 D1133 CHEW JIA XING
 D1134 SOH HONG PING
 D1135 TAN MAO NING CHARISSA
 D1136 PNG HWI KIANG ADRIAN
 D1137 AMRUTHA EVANGELINE MARTIN
 D1138 PREETA VIVEKANAND
 D1139 RUBY MATHUR
 D1140 HAN JIA GUANG LEON
 D1141 AUSTIN LEONG HOI KIT
 D1142 SHEETAL SINGHANIA
 D1143 CHER CHIN CHING EMILY
 D1144 BANTHIA DHONDGE PRACHEE MUKUND
 D1145 SHANMUGA PRIYA D/O SUBRAMANIAM
 D1146 GOH HIAN GUEK
 D1147 CHUA MI XUAN
 D1148 YAP SHU ER PEARLYN
 D1149 CELINE NG-CHAN
 D1150 ALLESHIA MARJORIE NORDMARK
 D1151 CHERYL ONG MAY YEN
 D1152 JEEVITHAN S/O MURALIDHARAN
 D1153 V ERIKA NISSA
 D1154 BOH YEW PIN JIMMY
 D1155 LOH SIEW MEI (LU XIUMEI)
 D1156 SITA ELEXA BURGESS
 D1157 LIM HUI XUAN CLARA
 D1158 CHEW SHI JUN
 D1159 OOI YEE FEI
 D1160 TAN TOH KHIN LOUISA
 D1161 YEO KHAN HUI
 D1162 NG HSIN YEE CAROLYN
 D1163 THAKORE CHITRANGADA
 D1164 TS AMARBIR SINGH
 D1165 YICK LI LEE
 D1166 ANDREAS OEHLER
 D1167 TAN KOK TING
 D1168 LYNDSAY RAE MATHEWS
 D1169 ELLE SARAH HO KA-SHIN
 D1170 BERYL YANG CHU JING
 D1172 LIN XIA
 D1173 THONG YAN MIN, KRISTIE
 D1174 WANG HUI TING
 D1175 SHEREEN NG
 D1176 HENG HUI BOON SHARON
 D1177 LAI PEI YEN
 D1178 ESTHER SNG MEI TING
 D1179 ESTHER CHAN JUN YING
 D1180 CHIA BOON SENG, JEBSONS
 D1181 CHAN ZHEN-LI DAPHNE
 D1182 CHEN SIYU
 D1183 LAU HWEE MIN JAYNA
 D1184 MARTA JULITA CIACH-MAHESWARAN
 D1185 DEVENDRA BISARIA
 D1186 MEETA GUPTA HARI
 D1187 CHEE WEI MING MARCUS
 D1188 SOH CHIN HENG
 D1189 WONG XIAU JIAN
 D1190 NILANGA PRIMALI HETTIARACHCHI
 D1191 MOK SWEE YUEN
 D1192 PUVANENDRAM SELVEGARANI LINZI
 D1193 AU WAI CHING LOUISE
 D1194 ZHOU XIEMIN
 D1195 LIM ENG SENG
 D1196 SOUMYA PODUVAL
 D1197 EDNA NG LING LING
 D1198 CELESTINE CHIANG FERN
 D1199 TAN HUIMING
 D1200 MOHAMMAD FAIZAL BIN MOHAMMAD NOR
 D1201 YEO MENG YING
 D1202 LIM MING SA AUDREY
 D1203 MATTHEW TJOW CHEN-LIANG
 D1204 LEE SENG HOO
 D1205 WONG CHENG HAN EMMELINE
 D1206 DOMINIQUE LIM
 D1207 HEE HUI WEN PAMELA
 D1208 RITA SHANTHINI RICHARD
 D1209 LUO MEI LIN MAUREEN
 D1210 OUYANG HUIYI
 D1211 JOSEPHINE RUTH SIM SHI LI
 D1212 ASHWINI D/O RAVENDRAN
 D1213 BEVERLY VICTORIA FOO HUEI-LING
 D1214 CHEN YUJUN JASMINE
 D1215 LAU YUN AN
 D1216 VERA HO
 D1217 GOH FENG XIANG GAVIN
 D1219 YEO NYUK PENG JOSEPHINE
 D1220 JAP REN HUEI
 D1221 NAINA BHATIA
 D1222 SARAH ELESSIA ASHIKA

MEMBERS LISTING

AS AT 31st DEC 2025

D1223 KARISA ANNE SUKAMTO
 D1233 HONG YAN RONG JOANNA
 D1234 LYDIA NG SY WEI
 D1235 EMILY MEOW XIN YI
 D1236 KRISNA RAJAN BHARVANI MALANI
 D1238 ONG LEE ENG
 D1239 TIAN YUANYUAN
 D1240 VERONICA CHIN HWEE LING
 D1241 CHEE MING FERN REBECCA
 D1242 LEE HUI FANG
 D1243 HO YAN LIN
 D1244 YONG CHOON LIAN CHARLENE
 D1245 TAN EE WA
 D1246 CECILIA TEO HWEE KIM
 D1247 TANG WEN KANG NICHOLAS
 D1248 KAREN O'DONNABHAIN
 D1249 WANG SIYING
 D1250 NG LEE CHOO CAROLINE
 D1251 POH JIE YING
 D1252 ISABELLE LEOW JAY MIN
 D1253 JITEN PITKAR NIDHI
 D1254 MUHAMMAD EFFENDY BIN IBRAHIM
 D1255 BRIDGET FERNANDEZ
 D1256 SIM YONGXIANG KEN
 D1257 PAN MIAOHUA
 D1258 JEANETTE YANG WAN YIH
 D1259 NELEENA S NAIR
 D1260 GEORGE CHAN WEE HONG
 D1261 SHARANJIT KAUR DHALI WAL
 D1262 NG JIA MIN
 D1263 TEY JING YIN
 D1264 NUR 'ZAHIRAH BINTE ABDUL RAZAK KHAN
 D1265 ELIZABETH ANNE MIRESKANDARI
 D1266 ZHENG HUIJUAN
 D1267 NURUL ASHIKIN BTE MUHD LEE
 D1268 LEOW WEI RU
 D1269 EVETTE TAN HWEE CHEN
 D1270 CHIA CHUN SIAN AARON
 D1271 WEE SIN YEE
 D1272 NEO BEN JIE BENJAMIN
 D1273 HAIQAL BIN LATIF
 D1274 BALACUA GERALDINE APOLINAR MRS DE WITT
 D1275 SABRINA CHIN SIEW LAN
 D1276 CHARLENE CHONG
 D1277 SOH CHUANYUAN ELLIOT
 D1278 KELLY TITUS
 D1279 SGE EE CHIN (YU YI JING)
 D1280 LIM SHIRLYN
 D1281 POON CHEE SHEEN ALVIN
 D1282 CHAN JIA YUN
 D1283 CHAO SHUN XIAN JASMINE
 D1284 KOH HONG HOCK
 D1285 ALARIC SEAH KERN WEE
 D1286 VIDYA RAJAGOPALAN
 D1287 LYNETTE LEE
 D1288 THAM TZE WHYE JERYL
 D1289 LOW HUI TING
 D1290 CHENG LEI
 D1291 FAUZIA SIDDIQUI
 D1292 JUDE KUNASEELAN EDWARD
 D1293 PRIONKA RAY
 D1294 SU YUNTING
 D1295 ONG SHI QING
 D1296 TAN WEE LING
 D1297 BRANDON PARADISE LIM HUANG SHENG
 D1298 ANUSHA SHANMUGANATHAN
 D1299 LIAU ZHI WEI BENJAMIN
 D1300 GAN JIA-AN TIMOTHY
 D1301 MARGARET CHYE SZE YEEN
 D1302 LOW HWEE LING JEANETTE
 D1303 PAULINE LAU SOK HIA
 D1304 CHARMAINE MARN RI HUI
 D1305 LEE CHOON YEN
 D1306 SU ZHIYING
 D1307 VIDHYA MARIA THOMAS
 D1308 VANESSA HELLEWELL
 D1309 TEE YIN LONG
 D1310 LEONG SHANG MIN CHARMIAN
 D1311 LOW SWEE XIANG
 D1312 RON YAP CHEN XIONG
 D1313 EUNICE TAN
 D1314 CALVIN LEONG JIA JUN
 D1315 LU CHUANLING
 D1316 LOH YOKE KIEEN SERENE
 D1317 ANASTASIA HAY
 D1318 SARAH GOH KAI XIN
 D1319 CINDY NG SIANG HOON
 D1320 CHEAM CHEE CHIAN
 D1321 SITI AZURA BINTE SARIPI @ JULYA
 D1322 CHAN CHING
 D1323 LOH HONG HONG
 D1324 XIE LI
 D1325 OOI YINN SHAN
 D1326 MELISSA TEY
 D1327 ROSELYN RENUKA DANIEL
 D1328 LIM ENG WEI WAYNE
 D1329 TAN SHENG WEI FILBERT
 D1330 MHAIRI JERGA
 D1331 RUTH JESSY DORIS
 D1332 LEE GIN YEN JANET
 D1333 CHEY CLARICE
 D1334 PETER CHAN TENG HONG
 D1335 SHRUTIKA KAPOOR
 D1336 LIM SHU TING BELINDA
 D1337 NURLEEN BINTE MOHAMED
 D1338 GE QIN
 D1339 JOWENA CHENG
 D1340 VENKATESH NARASIAH
 D1341 MAHLINI D/O MURUGAN
 D1342 BELUR RAMADAS ROHINI
 D1343 JAMES TONG KA PING
 D1344 ZAAKIRA MAHREEN BINTE SHAHUL HAMEED
 D1345 WENDY MORTON
 D1346 NUR HIDAYAH BINTE KUWAJAMOUINUDDIEN
 D1347 HAN QINGPEI
 D1348 HO EE MING DAVID
 D1349 EMMA KWEE JIAN HUI
 D1350 TAN SIOK CHING
 D1351 YIN FENG
 D1352 SARASVATHY D/O GOVINDASAMY ANNAMALAI
 D1353 YANG ZIQI
 D1354 TANG HUI SI
 D1355 KOH TECK SENG ANDREW
 D1356 TAN WEE KEONG
 D1357 TAN FUCHENG
 D1358 MANOHARI MARY MUNUSAMY
 D1359 CHRISTINA CHENG HENG MEI
 D1360 HAWA NITA BINTE MOHAMED RASHID

MEMBERS LISTING

AS AT 31st DEC 2025

E0060 CHEONG KUAN YEE
 E0063 LEE HONG YIAP
 E0064 RENEE BUTLER
 E0065 PHUA HWEE CHAY DERRICK
 E0066 HAAS SARAH
 E0067 YEO KE XIN
 E0070 TAN WAI HENG
 E0073 LEE KOK MENG DAVID
 E0076 VERGHESE SHOBA
 E0077 NAIR AARTHI SUBASH NAIR
 E0088 KUDARI ISAIAH THIMOTHY
 E0089 LIOW HWEE HSIANG
 E0095 VEDANTA ATTRI
 E0096 LAM WEE WOON
 E0097 LEE ZI HAO
 E0102 ANGELINE KIN
 E0106 JOSE FERREIRA FILHO
 E0108 CHEW CAI YING STEPHANIE
 E0111 STELLA TAN
 E0112 KIOK SENG
 E0115 HONG WAI LENG MICHELLE
 E0118 ABDUL HALIM BIN MUHAMAT YUSOF
 E0119 NG CHERN CHERN DIANA
 E0126 ANG JIA YI
 E0127 EVELINA ONG YI QING
 E0130 TAN MAY FUNG
 E0131 ARUL ANAND ERIC LUCIO ERUCIO DAS S/O A SUDHA ANN NANCY
 E0134 OH CHEE SIONG
 E0137 SCULLY DEBRA THERESA
 E0138 LIEW TIAN EN
 E0141 BERMONT GREGORY LAWRENCE
 E0142 ER YAN CHUI
 E0146 HO MEI LIN SERENE
 E0147 MAGHFURAH BINTE SALIMEN
 E0148 LOH JINFENG
 E0150 SHARMINI WINSLOW
 E0151 RUCHI JOSHI TALWAR
 E0152 GO ZI YI TRICIA
 E0153 GOH ZHI WEI ALVIN
 E0154 BALAJI KALPANA
 E0156 TAY WENLING ADELINE
 E0157 CHARLINA GOZALI
 E0158 AFIQAH BINTE ADZHARI
 E0159 NAJMUNNISA BINTE MOHAMED BAROKH
 E0160 TENG SIEW KIEN
 E0162 ABREE WONG
 E0163 KWOK CHING YEE
 E0164 VINCENT WONG
 E0165 ALICIA PRESCOTT
 E0167 FERNANDEZ JEAN
 E0168 JOASSEPH SOLOMON
 E0170 MUHAMMAD QAYYUM BIN NORSHAPIEE
 E0172 ALISON FORD
 E0174 CHAI HUI YEN
 E0176 ABDUL LATHEEF NAREEMAN
 E0177 ENG JING YU KRISTIE
 E0178 LIM JIA QI SAMANTHA
 E0180 SITI NURSHAFIQAH ASHUR BINTE ABDUL KADIR
 E0182 RAVINDRAN S/O SADANANDAN
 E0184 MARK TAN WEN MIN
 E0185 LIM YI JIN GENEVIEVE
 E0186 MELISSA MONTEIRO FORTES DIAS
 E0187 VARIAN MONTEIRO J J
 E0189 CHNG YEN PING
 E0190 SUGANYA D/O VIJAYAKUMAR
 E0191 LEW SHAN YAO
 E0192 PRISCILLA KUA BEE GUAT
 E0193 TAN QIAN YONG
 E0194 MOHD NAWAZ S/O MOHD HUSSAIN
 E0196 KARLA CHRISTINE REYES
 E0198 BAYANAGARI MALAVIKA
 E0199 GWEN NG PEY YNG
 E0200 CHEONG ELAINE YILING
 E0201 VIMAL SIVANESAN
 E0202 LESLIE CHE PING HSU
 E0203 RASHMI SHARMA
 E0204 LIM HUI CHERN
 E0205 WONG YUEH YII
 E0206 CHEN WEI CHIT
 E0207 OBERDAN MARIANETTI
 E0208 WEISIM HO
 E0211 XU JING
 E0212 NICHOLAS CHIA CZET LEE
 E0213 LOH WEI PING
 E0214 JOAN LIU JINGUI
 E0216 ZOA YTHA CHAN TING JIA
 E0217 XIN MIN
 E0218 MUHAMMAD ALAMIN BIN AB MAJID
 E0220 NURULAIN BTE MUSTAFA
 E0221 TEO BEE KHIM
 E0222 CHONG YEONG MAY
 E0223 NEEMIKA RAI
 E0224 WANNADWAH BINTE JA'AFAR
 E0225 XIE HUIQI AGGIE
 E0226 TEE MEI YUEN SAMANTHA GENEVIEVE
 E0227 ANNE MELLISSA JAYAWICKREMA
 E0228 LIM SOCK HWEE
 E0229 ASHIWINIE MORGAN
 E0230 ALLYSON LIU
 E0231 GAN MING KUANG
 E0232 SARA ABRAHAM
 E0233 FOO KOONG HEAN
 E0234 LIM WEIMING VINCENT
 E0235 LEE HWEE LIN
 E0236 LIM FANG YI
 E0237 CHING CHEOK HUI NICODEMUS
 E0238 NURUL INTAN BINTE RAMLEE
 E0239 GWEE CHEN TECK
 E0243 DOMINIC YEO KIAN TONG
 E0245 RAJESHWARY A/P CHANDRA KANDAN
 E0246 CARINA SIM HUI JUAN
 E0247 KIM HEE SUN JACKIE
 E0248 KAYATHRI D/O VEERAPANDIAN
 E0249 LAI CHEE WAH JASON
 E0250 SHALINI D/O S.NAIDU
 E0252 SAW PEI YIN
 E0253 WANG KIM MENG
 E0254 TAN HUI SHENG DOMINIC
 E0255 MENAKA THANKARAJU
 E0256 SELINA JANE RICHARDS
 E0257 CAROLINA SOFAL DELGADO
 E0258 LENA TAN GEK LI
 E0259 DAWN KWAN NING YU
 E0260 MAGDALENE NEW LEE CHING
 E0261 QU LI
 E0262 TAN KOG KNG
 E0263 PETER SEOW WEI KHEONG
 E0264 POH YOU ZHE IVAN

MEMBERS LISTING

AS AT 31st DEC 2025

EO265 XU FUYUAN
EO266 ANGELINE NEO
EO267 MELISSA ZEHNDER
EO268 NOORUL HAKIM BIN SURONO
EO269 FOO MEI JYE
EO270 YISHA STISKALA-YU
EO271 AZMAN BIN ANUAR
EO272 JYOTIKA OBEROI
EO273 TAN CHOON KIANG NICK
EO274 JIN JING
EO275 BETHANY XIEN WEN CHUAH
EO276 AIDAH BINTE YACOB
EO277 TAN KIM CHOO JOANNE
EO278 WILLIAM CALLUM FINLAY
EO279 XU BOYI
EO280 SMITH NICHOLAS BUCHANAN
EO281 LAU SHAO PHENG GRACE
EO282 DARREN HO JI YANG
EO283 PONNAMPALAM DENISE EDNA JEEVAN
EO284 WEE JIA HUI
EO285 AARTI CHIDAMBARAM
EO286 GAYATHRI DEVI D/O KANESON
EO287 MARIA MERTENS
EO288 TAY HONGCHENG

STUDENT MEMBER

FO013 TAN LENG YEN JACLYN
FO018 LAUG ERIC JAE
FO022 HENG YIK KUN
FO034 GAN JESLIN JIE LING
FO046 TANTECK LOONG
FO051 ZHAO JIE
FO053 COMBIN PERCY KHAMBATTA
FO076 JASMINE LAM XIN HUI
FO092 LEE SING YE, ELYSIA
FO101 LEE HUIYI
FO111 MOHAMMED NAZIM BIN RAHUMA DULLA
FO118 MARK FRANCIS MCCALLUM
FO119 WEE SEO LAY
FO127 BRIAN GAN BENG WEE
FO128 KHOH CHEN TA
FO141 CHRISTOPHER J BERNHARDI
FO143 LEE YIN YIN (LI YUNYUN)
FO144 ASRA FUAD SIDDIQUI
FO146 LOW HOU LAN
FO155 ANG LI MIN JESSICA
FO162 AMEER S/O MD MALIK
FO164 RATHI ANJALI ABHISHEK
FO165 LEE FU DE JUSTINE
FO166 WONG YEW WENG
FO167 RENUKA CHAUHAN
FO169 DENA LIM
FO180 JANA YAR
FO183 JULIAN LIM XUAN KE
FO190 JOANNE RAJ
FO194 SITI RADHIAH BINTE MOHAMED ARIFIN
FO195 LEE BING YI MELVIN
FO199 STEPHEN THOMAS MCARTHUR
FO201 CHOW YUET FOONG CYNTHIA
FO204 CHOK YEE LING
FO205 GENEVIEVE TOH YUN WEI

FO209 TOH KAI NING
FO210 MUHAMMAD ISA BIN YASMIN
FO211 LEE CELINE
FO212 WANG BI HUI
FO213 SARAH JANE WHITEN @ SARAH JANE WHYTE
FO214 ORATHAI THAMRONGRUNGROT
FO217 DURGADEVI D/O PALANIVELU MRS VINOD KUMAR
FO218 RAMA DEVI KATUKAVANUR RAJU
FO221 CHOO YUAN TING
FO222 UROOJ AMAN
FO226 VATHANA D/O SREEMURUGAVEL
FO228 AASHIMA JAIN
FO229 JUSTINA JO-ANN VERONICA QUEK
FO230 CHEONG NINA
FO234 SHANIA DEA MENANY SOPUTAN
FO237 KANG DANYANG
FO238 TAN WEI JING
FO239 AU WAI SZE
FO241 ANG KUO HSIANG JONATHAN
FO242 ANG TZE MIN ESTRINA
FO244 LIM KAI XUAN
FO245 SARASVATHI D/O SEGAR
FO246 FILBERT TONG ZHAO HAN
FO247 LUI LAY YONG
FO248 TAN HONG
FO251 TAY SHAO PIN
FO252 SUN CHIN HON
FO253 RIESAL MIKAEL IDRIES
FO254 DS VICKRAM
FO255 MEIMEI DAI
FO256 CHELSEA TONG KAI LING
FO257 GERALDINE NAH PUAY JOO
FO258 NEO BAO LONG
FO259 QIAN DI
FO260 ADINE TSU LYN LOH
FO261 LEOW EK TECK ALVIN
FO262 KANG SIEW IM GERALDINE
FO263 JAYNE STREET
FO264 ANGAD SINGH SODHI
FO265 EMMA EMMANUEL THOMAS

ASSOCIATE MEMBER

G0016 SIVARAJASINGAM MAHENDRAN
G0020 TAN HUI PING (CHEN HUIBING)
G0021 MALA C. KHARE
G0023 NG WEI-CHER GLEN
G0028 R. ALAMELU
G0033 TAN CHEW ENG
G0034 ANDRIESZ SABREENA
G0036 LAKHVINDER KAUR
G0045 IVON LONG
G0051 TOK MUI PENG ALICE
G0055 OVEREE JOSEPHINE JULIANA
G0062 NEO EE SHIANG ELEANOR
G0066 SELVATHI SAMBASIVAM
G0070 CHAN SUET FONG
G0077 CHUE LUEN SONG
G0081 NEO TECK KOON SIMON
G0086 THEVATHASAN TROY JACK
G0093 KALAVATHI RAMDASS
G0097 TAN YAK KOON

MEMBERS LISTING

AS AT 31st DEC 2025

G0101 BOEY WENG FATT
 G0104 LOEI LEE KOK JOB
 G0106 POH LING YIN
 G0108 UMA PAL
 G0109 KOH BEE PING
 G0116 LEE SEOW PING APRIL
 G0119 LUI YOOK WAI
 G0121 DEVANSHI DHIMANT SHAH
 G0123 JENNY RETIEF
 G0124 FONG KIM YEN
 G0125 GOH SIEW KHIM @ DR KHIM GOH
 G0132 TENG LEE TAT
 G0136 MARGARET CARTER
 G0138 HARBINDER KAUR
 G0139 LEE YIH CHIH SAMANTHA
 G0141 SEE KOK FUEN VERONICA
 G0144 SOONG CECILIA
 G0146 SEOW KOK PIAT
 G0156 IAN HILARY POULIER
 G0162 PONNIAH ANDREW JEYAPPAUL
 G0173 LEE YONG KANG ISAAC
 G0175 LO MUN YUE
 G0177 VANDERSTRAATEN MARIA
 G0178 SIOW THUTT MENN MICHAEL
 G0180 CHEE KIM LI LILY
 G0182 NGIEN TAI HUEN DIANA
 G0186 TENG YAO GUANG
 G0188 SANTHANA-FRANCIS MARGARET M.
 G0190 TAN PAUL
 G0194 RUCHI GOYAL
 G0195 KAN SZE HAN KELLY
 G0201 SNG GIN AI MAGDALENE
 G0207 ODETTE GRIMES
 G0241 HENG SIOW ING
 G0246 RAJOO SUSEELA
 G0251 LIEW LEE KIEN
 G0257 PATTERSON ANTOINETTE RENEE
 G0262 LOOI LI KENG
 G0265 KUMAR GURPALJEET SINGH
 G0266 GOH WENDY
 G0270 GIOTTA ADRIANA
 G0271 VERSOLATO REBECCA SIMONIS BARRETO
 G0274 FAESSLER-MORO TANJA
 G0275 GOH YILING EILING
 G0276 LIM WALTER
 G0277 LING SWEE LEONG ADRIAN
 G0278 GOH CHONG SIANG RICHARD
 G0281 KALAI SELVAN PRIYANITHA
 G0285 SU FAY MAY
 G0286 THNG WEI KUEN
 G0288 LEE CHEE TONG
 G0289 FANG AIYING
 G0292 KAUSHIKEE GHOSE
 G0298 JAYAKUMAR RAJAMANICKAM SHATISH
 G0299 ABIGAIL VICKY GOH
 G0306 SAMIRA SHAHUL HAMEED
 G0307 MICHAEL GOMEZ
 G0308 SHARON TAN HODINY
 G0311 CHEE XIANG YUN
 G0313 SANGEETHA JOSE
 G0314 WU YU NING
 G0317 ANG HWEE YANG
 G0328 TAN MEOW LAN JOYCE
 G0330 HWEE CHENG CHUA
 G0331 NATHAN HAUTEA PARRENO
 G0332 LEE MUI PINK
 G0333 EEMIN LOH
 G0337 UVARAJAN RAMA
 G0342 HIEW WEI XIAN
 G0343 SATHIVELU MANICKAM
 G0344 NATHAN NGE0
 G0346 SHANON LIM SHIEN WEN
 G0347 LOW LOON STACEY
 G0348 LIU LI
 G0349 NETASHYA BINTE MOHAMAD ESMON
 G0353 YIP EE XIU
 G0358 DOROTHY TENG YINGYING
 G0361 TEO TECK HENG STANLEY
 G0362 HELENA FOONG SIEW SHIA
 G0363 RUBY LYDIA CHAN
 G0364 LIM SHUN WEI EDWIN
 G0366 LEW YII JEN
 G0367 ANITA SHARMA
 G0368 ENG HIAP CHAI ASHER
 G0369 NORMA SIT
 G0370 NEO POEY FONG
 G0372 SEE YANG WEI
 G0373 LEE GUAT KEOW
 G0374 CECILIA TEO KIM MUI
 G0375 TEU YONG SIANG
 G0376 PREMA BALAKRISHNAN
 G0377 YANAN SHI
 G0378 JILLIAN LEONG WEI YING
 G0380 MUHAMMED ALI BIN MOHAMAD YUSOFF
 G0381 SIMRREN KAUR
 G0384 NUR HAYATI BINTE YUSOFF
 G0385 NG LI JIN
 G0386 CHEE BENG SUAN
 G0387 CHAN CHUI LING KAREN
 G0388 YANG ZHUO
 G0389 SADASIVAN ANITA JIA-WEN
 G0390 YEUNG WAI TING SANDY
 G0391 PANG KENT KENT
 G0392 OOI PAU YEN
 G0393 KAVITA PADMARAJA
 G0394 CHEO YEE WEI
 G0396 KWA SIEW MAE AILEEN
 G0397 CHNG SIEW KUAN LENA
 G0399 STEEL ANN YOM
 G0400 TIEN LI CHIH
 G0401 JEREMY YAU HEAN CHEW
 G0402 SEOW SIEW HUANG
 G0403 YIM LOCK KUM
 G0404 ELZBETH LAPUT IMMANUEL
 G0405 SUCHISMITA DO RAJENDRAN
 G0406 FOONG ZI EN NATHANIEL
 G0407 FARAH IZZAH BINTE IMRAN
 G0408 HDIDINOUS SANAA
 G0409 AU YONG YIN YIN
 G0410 JAYALAKSHMI PASUPATHINATHAN
 G0411 NAMRA USMANI
 G0412 MATTHEW JOSEPH ZAGRODNIK
 G0413 SHIN YONG KEN
 G0414 EASUDAS JASON
 G0415 TAN PIN PIN
 G0416 LILLIAN TEOH MEI KIN
 G0417 RINA ONG POH CHOO
 G0418 ENG PENG PENG

MEMBERS LISTING

AS AT 31st DEC 2025

GO419 NORIYA OZAWA
GO420 LAM JR-EARN KAREN
GO421 DIANA HC TAN
GO423 NIMISHA JAIN
GO424 KOW TUNG MOI JACINTA
GO425 GOH HUI WOON
GO426 JOSEPH SIEW PING FOOK
GO427 SHUM HIU YEUNG
GO428 TAN WAN LING
GO429 VONNIE HO CHING YEE
GO430 PANG CHARMAINE
GO431 EVETTE MEIER
GO432 ERICA LEE HWEE YEE
GO433 UNITHA D/O SUKUMAR
GO434 KONG JINJIN
GO435 PHOEBE NG KAI LIN
GO436 ALISON JANE FELLOWS
GO437 CALISTA LU LIN GOH
GO438 SOO WEI CHIEH
GO439 RUI FEN CHANG
GO440 SATHAMANGALAM VENKATAKRISHNAN GAYATHRI
GO441 CHONG SIU PING



Singapore Association for Counselling

FOR COUNSELLING
AND PSYCHOTHERAPY

This annual report is published by the Singapore Association for Counselling for distribution to its members.

Registered Office:

Address:
151 Chin Swee Road
#03-12 Manhattan House
Singapore 169876

Tel: +65 9625 1077
Email: admin@sacsingapore.org
www.sacsingapore.org

UEN no.: S83SS0024D

Secretariat & Contact Information

Senior Manager

Ms Stephanie Chin
stephanie.chin@sacsingapore.org

Assistant Manager & Secretariat

Ms Sandra Lim
sandra@sacsingapore.org

Finance

Ms Sarah Phua
finance@sacsingapore.org