



**Singapore
Association for
Counselling**

FOR COUNSELLING
AND PSYCHOTHERAPY

2021 ANNUAL REPORT

**Inclusive Practice,
Empowering Community**

CONTENTS

	Page
About SAC	3
President's Message	4 - 5
Executive Committee 2020 - 2022	6 - 8
Report of the Executive Committee 2021	9 - 16
Membership Strength	17
Financial Statements	18 - 33
Members Listing as at 28th February 2022	34 - 42
Contact Information	43

About SAC

The Singapore Association for Counselling (SAC) is the professional body representing counsellors, psychotherapists, counselling educators and students in Singapore. SAC has come a long way – pioneered in 1982 by Mr Anthony Yeo from Counselling and Care Centre together with a small group of counsellors.

Between 1996 – 1999, a Paper was developed by the EXCO to propose standards for the Recognition and Licensing of Professional Counsellors in Singapore. This Paper was presented to the then Ministry of Community Development (MCD) in 1999 but was rejected as the counsellor fraternity was considered too small.

In 1999, Constitutional amendments related to training standards for membership were approved by the Registry of Societies and implemented for new membership applications. Subsequently, the new SAC Code of Ethics was accepted at its Extraordinary General Meeting.

In the year 2000, SAC established new guidelines for the accreditation of counsellor training courses in Singapore to ensure clinical practice and supervision components were adequately in place.

SAC Register of Counsellors was established during its 20th Annual General Meeting in March 2003. The first SAC Website was launched. The SAC Constitution was amended for more clarity on its definition of a trained and qualified counsellor with emphasis on the details of training, practicum, and clinical supervision.

SAC partnered the Ministry of Community Development and Sports, and the National Council of Social Service (NCSS) to develop standard counselling courses. The First Joint Committee meeting involved SAC, NCSS, and SSTI. This was followed by MCYS, SASW and the NUS Social Work Department. The first Course Recognition Manual was launched in December 2005.

New Membership Categories were introduced, and the SAC Constitution went through a major review and update in 2013.

SAC became a full member of the National Council of Social Service (NCSS) since April 2015.

In October 2015, SAC Ethics Manual of Procedures was launched by our Guest of Honour, Minister of State for the Ministry of Health, Dr Amy Khor at our inaugural Symposium attended by 500 delegates.

In 2016, SAC's Register of Clinical Supervisors was established during our 34th Annual General Meeting. The new Clinical Supervision Standards and Procedures document was approved.

SAC also established a New Clinical Supervision Components and Standards for New Clinical Supervisor Applicants and was approved at the 35th AGM in 2017 to be in effect from June 2018.

On 03 November 2017, the new SAC Logo, Website, and Member Portal was launched by Mayor Denise Phua at the half-day 35th Anniversary Conference.

At the end of 2018, the EXCO decided to terminate the Secretariat services with the Singapore Professional Centre. From 01 January 2019, SAC started its own Secretariat services at Work Central Offices Pte Ltd with one full time staff, one part-time staff and Genesis Consulting as our financial services provider.

President's Message

The 26th Executive Committee of the Singapore Association for Counselling (SAC) is pleased to present its Annual Report 2021. The year under review was an eventful one. Global health events such as the waves of virus variants, the heightened awareness of mental health locally and the national vaccination programme, all shaped the year that has just passed.

SAC Membership

We're happy to report that much has been achieved for the Association this past year. As you will read in this report, we are growing steadily across many areas of importance to us. Our membership continues its climb, reaching 1208 as we close the year. However, the numbers of Registered Counsellor and Registered Clinical Supervisor recorded slight decrease to 377 and 114 respectively.

Our financial reserves grew in tandem to the membership growth, along with other fees collection such as advertisement and course recognition. The Association recorded a surplus of \$92,262, which is 34% more than the previous year. Our accumulated fund grew by 23.8% to \$480,188.

Recognition of Counsellor Education

In other developments, counsellor education programmes under our recognition scheme now have their recognition periods revised to between two (2) and four (4) years, depending on their review outcomes. This offers institutions and the Association greater flexibility in addressing concerns or improving programmes under the scheme.

Member-Events & Benefits

Thanks to volunteers on our three subcommittees, we held six (6) member-events throughout the year. These included new members' orientation, supervision groups, continual development workshops etc. that were conducted for our members.

A career & recruitment talk event supported by major social service agencies attracted almost 200 participants, including students from our recognised programmes. Further to that, 100 of our members attended two (2) external workshops with local and overseas speakers, courtesy of the Association for Marital & Family Therapy Singapore (AMFTS).

Overall, we recorded over 468 participants across these events, and we want to register our appreciation to our members for their support. In the same breath, I also want to highlight these professional development and networking opportunities as a key benefit of being a memb-

er of SAC. Read more about these events in the following pages of this report.

Social Media Presence & Media Engagement

During the year, you may have noticed that we have increased our presence on social media as well as mainstream media. More information is now delivered to you via our Facebook, Instagram and LinkedIn feeds. This is on top of our use of email communication and announcements released on our website. To that end, our quarterly newsletter summarises our social media posts to ensure that all members are included and kept abreast of our activities and festive greetings.

In addition, we had two (2) mainstream media engagements on two occasions – once on the growing interests of counselling education earlier in the year and a second, on a featured programme highlighting counselling as a growing profession in the later part of the year.

External Relations with Professional Associations

We have had exciting times on the external relations front as well. Furthering our relationship with fellow associations in the region, we signed an MOU with the Hong Kong Professional Counselling Association, paving the way to explore opportunities for closer collaborations going forward.

Community Engagement & Contributions

Closer to home, a representative from SAC was appointed to be part of the Steering Committee tasked to establish a Panel of Therapeutic Specialists (POTS) at the Family Justice Courts (FJC).

Adding to that, we strengthened our representation in the Ministry of Social & Family Development (MSF) led Social Service SkillsFuture Tripartite Taskforce through the addition of one more representative in the Counselling Sub-Team.

As it is said, partnership is a two-way street – we are happy to announce that both the Ministry of Education (MOE) and MSF have not only accepted our invitation but have already sent senior officers as representatives to serve on our Register of Counsellors Board – we extend our appreciation to them and welcome them aboard.

Awards & Recognition

We have our members to thank for these growing footprints in the social care and education sectors. Many have dedicated their valuable time and energy, beyond their day job, to make these happen. Joining the ranks of Ms Irene Loi and Dr Gilbert Fan, we celebrate the conferment of our very own nominee, Ms Ruth Chua, as Social Service Fellow, by the National Council of Social Service (NCSS).

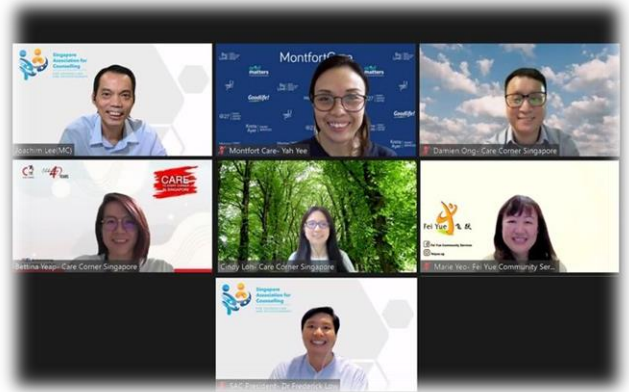


Another congratulatory note of recognition goes to Dr Gilbert Fan. He was also awarded the Outstanding Social Worker Award for his outstanding accomplishments in the social service sector. We are proud of him and all our veterans.



Stakeholders & Partnership Appreciation

I take this opportunity to thank the MSF, MOE, FJC, NCSS, AMFTS, SASW, Care Corner Singapore, Fei Yue Community Services, Montfort Care, Counselling & Care Centre, Executive Counselling & Training Academy, James Cook University, Singapore University of Social Sciences, TCA College, and all other stakeholders for their support rendered to SAC during the year.



Volunteer & Staff Appreciation

On behalf of all members, I want to thank the Chairpersons and member-volunteers of all Sub-Committees and Boards. I must also thank Ms Sarah Phua and Ms Lee Pei Yee from Genesis Consulting & Solutions and our secretariat Ms Sandra Lim and Ms Janice Choo for carrying out their roles dutifully and with pride. I thank Mr Andy Lam, Mr Dan Ng, and other colleagues on the 26th Executive Committee, whose term is coming to an end, for sharing the leadership in advancing the Association over the last two (2) years!

SAC Member Appreciation

To all members, THANK YOU for your participation and support at Association events and activities. I encourage you to take time to read the pages of this annual report – be inspired by the passion of those who have made it possible for all the progress and events that have taken place this past year. Join them, be a volunteer with SAC today!

Yours truly,

A/Prof Frederick Low
President 2020 – 2022

Executive Committee (2020 – 2022)

PRESIDENT – A/PROF FREDERICK LOW

Frederick has held many roles in counsellor education and research in the past decade. As an adjunct faculty with several institutes of higher learning, he contributes to the teaching of counselling and psychology. For those in the field, he is a supervisor, consultant and at times, a trainer. He also serves on editorial boards and scientific committees of scholarly journals and conferences in counselling and psychology.

Frederick served as the Vice President of the Singapore Association for Counselling from 2016-2020. He held the portfolio as Chairman of SAC's Course Recognition Board from 2014 – 2020 and is now working with stakeholders in the field in reviewing the local counsellor education landscape and the future of SAC's role in course recognition and regulation. Frederick is a SAC Registered Counsellor and Registered Clinical Supervisor. He is also a Chartered Psychologist and an Associate Fellow of British Psychological Society.

VICE PRESIDENT – MR ANDY LAM

Andy has worked in the social service sector for more than 10 years. His areas of expertise include the provision of casework services and clinical supervision, improving standards of practice through practice evaluation, and training and organisational development.

A SAC Registered Counsellor and Registered Clinical Supervisor, as well as a Registered Social Worker and DISC-certified human behaviour consultant, Andy is also choice theory / reality therapy certified. He was previously the Assistant Director of Viriya Community Services, a voluntary welfare organisation, focusing on practice evaluation and standards within the organisation, sectorial involvement through the participation of workgroups and training, particularly around the Code of Social Work Practice for Family Service Centres in Singapore.

Andy is currently a Senior Court Family Specialist with the Family Justice Courts, focusing on family dispute resolution work, extending from his strong belief in systemic principles.

Andy holds a degree in Master of Social Science (Counselling) from the University of South Australia and a Graduate Diploma in Social Work from the Singapore University of Social Sciences (formerly known as SIM University), in addition to a Bachelor of Science with the National University of Singapore.

2ND VICE PRESIDENT – MR DAN NG

Dan has been practising as a counsellor in various settings for the past decade. He is trained in Advance Care Planning (ACP) and has been engaging his clientele in End-Of-Life (EOL) discussion as part of his clinical work. Dan has strong interest in working with children and elderly and believes in empowering his clients.

Besides being a counselling practitioner, Dan has been providing individual, group supervision and case consultations.

Dan is a SAC registered counsellor/supervisor and a Master Clinical Member. He is also a professional member with American Counselling Association and is registered as Level 4 member/ Clinical Supervisor with Australia Counselling Association (ACA).

Currently, Dan serves as the 2nd Vice-President of the Singapore Association for Counselling and had contributed previously as Assistant Hon Secretary (2016-2018), Co-opted Member (2014-2016).

HONORARY SECRETARY – REV SAM KUNA (2020/21)

Sam Kuna is the Dean of the School of Counselling and an Associate Professor at TCA College – a multi-disciplinary Christian college pioneered by the Trinity Christian Centre, Singapore. Sam is a SAC Registered Counsellor and Registered Clinical Supervisor and immediate past President of the Singapore Association for Counselling (2016-2020). Sam was also conferred the Fellow Member status at the SAC AGM 2020 for his contributions to the counselling profession in Singapore and his many years of service in SAC.

Starting his counselling practice since the late 1980s, Sam had further training in psychology and marriage, family, and child counselling. He is a practicing family therapist, child counsellor, a sandplay practitioner, and a certified master addiction therapist. He is a clinical member of the Association for Marital and Family Therapy (Singapore), a Founding Board Member of the Asia Pacific Certification Board (APCB), which certifies addiction therapists in Asia, as Adviser to the Association for Christian Counselling (Singapore), and Board Member of the Asian Christian Counselling Association. Sam is an ordained preacher with the Assemblies of God of Singapore.

Executive Committee (2020 – 2022)

ASST HONORARY SECRETARY – MS HEMA GURNANI (2020/21) HONORARY SECRETARY (2021/22)

Hema has served in the Social Service Sector for 23 years. She was previously the Centre Head of WINGS Counselling Centre and is currently the Co-Founder and Director of AppleTree Counselling Pte Ltd. Trained in Child Psychology and Counselling, her primary areas of expertise include play, sand tray and symbol work for pre-schoolers, children, and youths. She is also well-versed in family therapy and mediation, having worked extensively with families and single parents on complex issues like divorce and separation, as well as with members of the LGBTQ+ community on existential challenges.

As a SAC Registered Counsellor & Clinical Supervisor, Hema continues to supervise interns from SAC-recognised Counselling programmes, MOE Counsellors and the Community Practitioners. She was also an adjunct lecturer at James Cook University and ECTA for the MOE Trainee Counsellors.

Since 2016, Hema has served SAC in various capacities, be it on the 'Community Counsellor Sub-Com,' the 'Counsellors Education Board', the 'Register Board' or her present role in the EXCO as Honorary Secretary.

Hema holds Masters of Counselling, a Postgraduate degree in Education and a Diploma in Child Psychology. She is an accredited play, sand tray and symbol work therapist, a registered Social Work Practitioner under Singapore Association for Social Work and has administrated Home Study Reports for the Ministry of Social and Family Development.

HONORARY TREASURER – MS AU HOI TING

Hoi Ting has 10 years of experience working in the social service sector. She has a Graduate Diploma in Counselling and Masters in Social Work. She had worked seven (7) years as a counsellor in AWWA Family Service Centre and is currently a social worker with Sengkang Family Service Centre.

Hoi Ting is both a SAC Registered Counsellor and SASW accredited Social Worker. She uses experiential approaches to enhance her work with individuals and multi-stressed families. She supports families facing challenges on various issues ranging from family conflicts, family violence, child protection, and mental health. Hoi Ting is also a volunteer with other non-profit organisations that support the wellbeing of children and youths.

ASSISTANT HONORARY TREASURER – MS LYDIA LIM

Lydia is a PEAKS People Analytics & Management Consultant with Research Communication International. With over 20 years of experience in clinical practice, counselling, management & leadership development, educational and organisational profiling, people management consulting and training, Lydia's specialty in developmental psychology is in integrating personal and professional development across the lifespan.

As a PEAKS Master-Trainer & Supervisor to PEAKS Consultants across industries, she strives to continuously expand industry and real-life applications provided by the PEAKS People Analytics & Profiling Technology – across vast spectrums of professional, educational and personal domains for positive & integrative impact on lives & communities.

Lydia's professional experience includes being a Clinical Director, Supervisor & Lecturer for local counselling degree and postgraduate programs locally, a mental health professional within hospital settings, and an educational therapist and counsellor in different clinical and community sectors. Lydia remains passionate in supporting strong clinical practicums and the training and supervision of professional counsellors and industry coaches.

Lydia is a SAC Clinical Member. Previously active on the SAC EXCO as Committee Member 2006-2008, and Honorary Secretary from 2008 – 2010, Lydia was co-opted in 2020 to serve on the SAC EXCO again as Assistant Honorary Treasurer (2020-2022).

COMMITTEE MEMBER – MS XIAO LI EN (2020/21) ASSISTANT HONORARY SECRETARY (2021/22)

Li En is a SAC registered counsellor who holds a Master in Counselling (Monash University), a degree majoring in psychology and sociology, and diplomas in special needs and dyslexia studies. Li En has experience working with people who face challenges due to family conflicts, academic stress, mental health issues, special needs, trauma, and blood cancer.

Executive Committee (2020 – 2022)

COMMITTEE MEMBER – MS CAROLYN LIM

Carolyn is a SAC registered Counsellor, a SASW registered Social Worker, and an AMFT Associate Member. She holds a Master's in Counselling (Monash University) and a Master's in Social Work (SUSS). She is currently with Care Corner Counselling Centre. Mainly supporting people in Mental Health, Trauma and Group Therapy for several years, Carolyn specialises in creative humanistic, experiential and expressive approaches that enhance the lives of people.

Prior to this, she was with Association of Women for Action and Research (AWARE) and AWWA Family Service Centre.

COMMITTEE MEMBER – MS GIAM XIUHUI, JENNY

Jenny holds a Master of Social Science (Counselling) from the University of South Australia and a Postgraduate Diploma in Psychology from James Cook University. In addition, she is a certified Professional Certified Coach with International Coach Federation. Jenny is also a SAC Registered Counsellor and Clinical Supervisor and a Registered Social Service Practitioner with SASW.

Jenny has 12 years of working experience in the social service sector. She has worked with families and individual with complex issues ranging from child protection and behavioural issues, family violence, mental health, financial and martial. At present Jenny works as a Correctional Rehabilitation Specialist at Singapore Prison Services. Jenny also volunteers with the Singapore Army Forces Volunteer Corps as an Auxiliary Counsellor.

COMMITTEE MEMBER – DR CHAN PEI SEE JOYCE

Joyce is a Master Clinical Member and Registered Clinical Supervisor with Singapore Association for Counselling (SAC). She is a Registered Social Service Practitioner with Singapore Social Work Association (SASW) and an Associate Licensed Minister with The Assemblies of God of Singapore. Joyce has over 20 years of experience working in the social sector; directly with clients and at management level. Currently she is with Singapore Prison Service. She oversees a Team supervising young offenders who are released into the community.

She started as a Youth Counsellor with Teen Challenge Singapore. Subsequently, she assumed the role as a Youth Director, followed by the Executive Director from 2010 to 2014. Besides her full-time work, she has been serving as adjunct lecturer and clinical supervisor with schools offering Post-graduate diploma and Master programmes. Joyce had previously served on the EXCO as a Committee Member and other roles.

COMMITTEE MEMBER – DR SARAVANAKANNAN GANAPATHI

Kannan has been in counselling practice for more than 13 years working in various educational settings in public service. He was appointed to various leadership roles since 2013 and is currently working in a post-secondary institution. Prior to his counselling career, he worked in operational and managerial capacity in local and multi-national engineering organisations based in Singapore.

Kannan has been a member of SAC since 2008 and has served in the School & College sub-committee for over five years previously. He is a Certified Master Solution Focused Practitioner and has a Diploma in Clinical Supervision. He is trained in facilitation of community programmes that promote dialogue across differences and has volunteered as a facilitator at various dialogue sessions including those at national events such as Harmony Works! conferences. He is a Life member of Society of Prevention of Cruelty to Animals (SPCA).

Report of the Executive Committee 2021

SINGAPORE ASSOCIATION FOR COUNSELLING

CLINICAL SUPERVISION BOARD SUMMARY REPORT FOR 2021

Term:	Jan 2021 – Dec 2021
Chairperson:	<ul style="list-style-type: none"> ▪ Dr Jessica Leong (2020 – Nov 2021) ▪ Mr Joachim Lee, PBM (Nov 2021 – Mar 2022)
Board Members:	<ul style="list-style-type: none"> ▪ Mrs Linda Wan-Koh ▪ Ms Livingston Anna Catherine ▪ Rev Sam Kuna ▪ Mr SB Viknesan ▪ Mrs Sharon Sng

The Clinical Supervision Board (CSB) received eleven (11) applications for recognition as SAC Registered Clinical Supervisors in 2021. Nine (9) applications were approved, and two (2) were rejected as applicants did not meet the three (3) year Registered Counsellor requisite.

The CSB continues to review its admission criteria to maintain its relevance to the current context and practice. In so doing, the CSB deliberated on two of the criteria – "minimum 3 years post SAC Registered Counsellor status" and "minimum 50 hours of training in clinical supervision". In summary, the CSB proposed to retain the first criteria and make recommendations for the second criteria, which will be updated in due course.

Moving forward, the CSB will continue to be apprised of international standards when reviewing its admission criteria.

Lastly, I would like to take this opportunity to express my appreciation and gratitude to my team members for their contribution and support.

Reported By:

Dr Jessica Leong, on behalf of the Clinical Supervision Board, SAC

Report of the Executive Committee 2021

SINGAPORE ASSOCIATION FOR COUNSELLING

COUNSELLORS EDUCATION BOARD SUMMARY REPORT FOR 2021

Term:	Jan 2021 – Dec 2021
Chairperson:	<ul style="list-style-type: none"> ▪ Ms Trina Tan (2020 – 2021) ▪ Mr Andy Lam (2021 – 2022)
Board Members:	<ul style="list-style-type: none"> ▪ Ms Au Hoi Ting ▪ Ms Carolyn Lim ▪ Ms Hema Gurnani ▪ Ms Irene Loi ▪ Dr Saravanakannan Ganapathi ▪ Ms Agnes Chia (SASW)

The Counsellors' Education Board (CEB) completed the review of all recognised programmes in 2021. In addition, the CEB revised its Course Recognition Manual, approved by the Executive Committee in Feb 2021. This revision introduced different recognition periods, as opposed to the standard 2-year timeframe. This was designed with the view to balance the administrative requirements for both institutes and CEB, whilst encouraging the pursuit for excellence in counselling training.

The CEB also observed heightened interest in the provision of counselling programmes in Singapore. This was evidenced by CEB's provision of consultations to five (5) potential training providers in 2021, amidst which, the CEB reviewed two (2) new applications, with one currently ongoing.

It has been almost two (2) years since the pandemic struck, forcing the counselling practice environment to continually adapt to uncertain times. The CEB is appreciative of the institutes' tenacity and creativity in coping with the dynamic environment whilst upholding the standards of training. The CEB wishes to assure the institutes that necessary support will be rendered to them, as we remain apprised of the current challenges experienced. To this end, the CEB has conducted a survey and we will be getting in touch with the institutes in due course.

Lastly, I would like to take this opportunity to express my appreciation and gratitude to my team members, the Executive Committee and Sandra, our Secretariat for their contribution and support.

Reported By:

Andy Lam, on behalf of the Counsellors' Education Board, SAC

Report of the Executive Committee 2021

SINGAPORE ASSOCIATION FOR COUNSELLING

ETHICS BOARD SUMMARY REPORT FOR 2021

Term:	Jan 2021 – Dec 2021
Chairperson:	<ul style="list-style-type: none"> ▪ Rev Sam Kuna
Board Members:	<ul style="list-style-type: none"> ▪ Mr Andy Lam ▪ Mr Benny Bong ▪ Mrs Juliana Toh ▪ Ms Mittal Vinti ▪ Ms Sophia Ang ▪ Dr Steven Tham ▪ Dr Muni Winslow (Psychiatrist) ▪ Mr Robin Lim (Lawyer)

This report is of the work undertaken by members of the Ethics Board in the year 2021.

The Ethics Board met three (3) times in 2021 and discussed various matters. In summary, the Ethics Board received two (2) complaints, but there has not been any further movement on these two cases as one did not follow up with a formal complaint, whilst the other is pending the confirmation of possible criminal proceedings.

In addition, the Ethics Board commenced the review of the SAC Ethics Manual of Procedures (2015) and hopes to present the refreshed copy in due course.

The Members of the Ethics Board are heartened that members are practising responsibly while experiencing the instability of the COVID environment and attending closely to each of their clients. This will help greatly to uphold the competencies and professionalism of counselling practitioners in Singapore, especially in the eyes of the public.

Lastly, I take this opportunity to express my appreciation and gratitude to members of the Ethics Board who served from 2020-2022 for their contributions and support.

Reported By:

Rev Sam Kuna, on behalf of the Ethics Board, SAC

Report of the Executive Committee 2021

SINGAPORE ASSOCIATION FOR COUNSELLING

REGISTER OF COUNSELLORS BOARD SUMMARY REPORT FOR 2021

Term:	Jan 2021 – Dec 2021
Chairperson:	<ul style="list-style-type: none"> ▪ Ms Giam Xiuhui, Jenny
Board Members:	<ul style="list-style-type: none"> ▪ Ms Denise Yap ▪ Ms Hema Gurnani ▪ Mr Ng Chong Chee Dan ▪ Ms Reena Goenka ▪ Ms Rose Apphia Rujiab Faquir ▪ Ms Yuyu Kow ▪ Ms Nancy Ng (MSF) ▪ Ms Malar Palaiyan (MOE)

Category	Reviewed		Approved		Numbers of meetings	
	2021	2020	2021	2020	2021	2020
Clinical Member + Registered Counsellor (New Applications)	109	69	82	41	8	8
Registered Counsellor (Renewal)	212	136	185	127		

The Register of Counsellors Board (RCB) continues to play a crucial role in upholding high professional standards amongst counsellors in Singapore – by overseeing the review of new and renewal applications of Registered Counsellors. In the year 2021, the RCB reviewed 109 new and 212 renewal applications over eight (8) meetings.

Furthermore, as part of the RCB's strategic plan, SAC has invited representatives from the Ministry of Education (MOE) and the Ministry of Social & Family Development (MSF) to the RCB. This provides a common platform for MOE, MSF, and SAC to identify and be apprised of emerging trends relating to the regulation of counsellors in Singapore. The RCB is pleased to have Ms Malar Palaiyan, Lead Specialist, Guidance Branch, MOE and Ms Nancy Ng, Director, Family Support Division, MSF as Ministry Representatives.

Moving forward, the RCB will harness the collective wisdom of the team to review and recommend enhancements to the current registration scheme. On the operational front, the RCB will continue to streamline the processes for both new and renewal applications.

Lastly, I would like to take this opportunity to express my appreciation and gratitude to my team members for their contribution and support.

Reported By:

Giam Xiuhui Jenny, on behalf of the Register Board, SAC

Report of the Executive Committee 2021

SINGAPORE ASSOCIATION FOR COUNSELLING

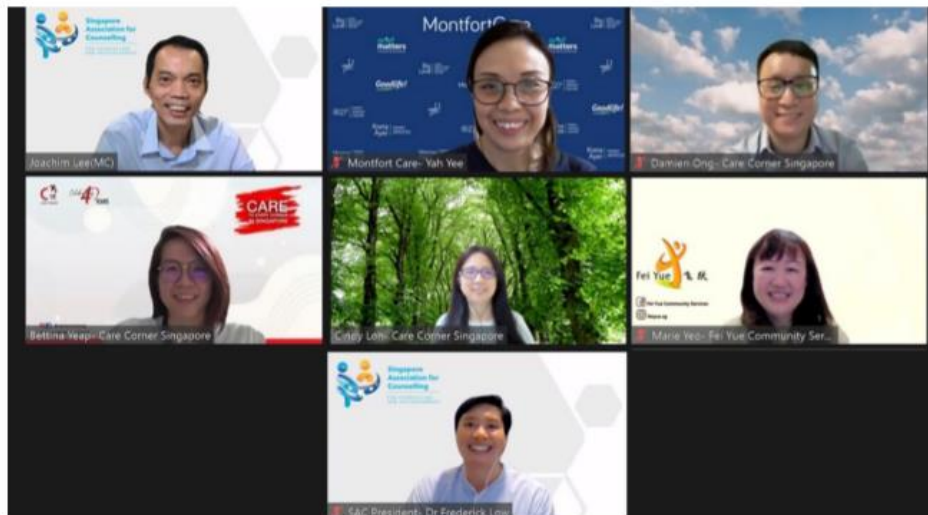
COMMUNITY COUNSELLORS SUB-COMMITTEE SUMMARY REPORT FOR 2021

Term:	Jan 2021 – Dec 2021
Chairpersons:	<ul style="list-style-type: none"> ▪ Mr Joachim Lee, PBM ▪ Ms Dawn Tan Hui Hong
Sub-Committee Members:	<ul style="list-style-type: none"> ▪ Mr Edwin Quek ▪ Ms Michele Gan ▪ Ms Sapna Mathews ▪ Ms Sukumaran Nair Indu

Community Counsellors Sub-Com has been actively exploring affordable training to upgrade skills and supervision to all members. In 2021, we have identified 2 major needs from members through the needs survey. As part of the Sub-Com's focus, we intend to identify an affordable and accessible group supervision to members.

Last year, over 190 counselling practitioners and students participated in SAC's inaugural Career Talk on 30 July 2021 which was co-hosted with Montfort Care, Care Corner Singapore, and Fei Yue Community Services. We hope to continue to support our members with new initiatives in the near future.

Career and Recruitment Exercise (CaRE) 2021



With the upcoming SAC's 40th anniversary event, we have been part of the coordinating committee in creating a meaningful milestone being part of the SAC's family.

Reported By:

Joachim Lee, on behalf of the Community Counsellors Sub-Committee, SAC

Report of the Executive Committee 2021

SINGAPORE ASSOCIATION FOR COUNSELLING

MEMBERSHIP SUB-COMMITTEE SUMMARY REPORT FOR 2021

Term:	Jan 2021 – Dec 2021
Co-Chairpersons:	<ul style="list-style-type: none"> ▪ Ms Carolyn Lim ▪ Ms Au Hoi Ting
Sub-Committee Members:	<ul style="list-style-type: none"> ▪ Ms Amy Fang ▪ Ms Celine Edmund ▪ Ms Cindy Loh ▪ Ms Julia Soh Ying Li ▪ Ms Tan Sook Khuan Helenna ▪ Ms Rose Apphia Rujiab Faquir ▪ Mr Sam Roberts ▪ Ms Xiao Li En

The 2021 highlight was our online SAC New Membership Orientation on Zoom during the pandemic on 3rd July last year. Our theme was "Journeying as a Counsellor". Different setting representatives: SAC President Dr. Frederick Low's address, Abigail from FSC, Berna from MOE, Celine from Prison, Cindy from FSS, Dan from Seniors, Rose from Private services were invited speakers to share their precious experiences to prepare our budding Counsellors for challenges and growth in this work. Members enjoyed the group interaction in break out rooms as they were better able to engage and network with each other. We welcome Atika, Benjamin, Hakim, Jeanette, Rachel to our SAC Membership Sub-Committee Team in 2022 after our Volunteer Interests Recruitment during this orientation. To date, SAC Membership Sub-Committee Team has grown to 15 members.



Thanks to Frederick, Andy, Dan, Kannan, Sam, Amy, Abigail, Julia, Berna, Celine, Rose, Cindy, Hoi Ting, Carolyn, Li En, Janice & Sandra for organizing this online SAC New Members Orientation on 3/7/2021, JOURNEYING with Counsellors during pandemic! We are not alone!

Reported By:

Carolyn Lim, on behalf of the Membership Sub-Committee, SAC

Report of the Executive Committee 2021

SINGAPORE ASSOCIATION FOR COUNSELLING

SCHOOL AND COLLEGE COUNSELLORS SUB-COMMITTEE SUMMARY REPORT FOR 2021

Term:	Jan 2021 – Dec 2021
Chairperson:	<ul style="list-style-type: none"> ▪ Mr Bernard Mackenzie
Board Members:	<ul style="list-style-type: none"> ▪ Ms Shamini Ras Ramachandran ▪ Ms Esendemir Sekhon Berna ▪ Mr Joshi s/o Chandrasenan ▪ Mr Jeffrey Lee ▪ Mr Mohammed Zullkarnain Bin Abdul Aziz ▪ Mr Teo Donavan ▪ Ms Xiao Li En

As the COVID-19 pandemic continues to challenge our lifestyle, School and College Counsellors Sub-Committee members were unable to meet face to face. Despite the challenge, the committee was committed to develop a network for our practising counsellors through a learning platform, Therefore, the team organised our 2nd Community of Practitioners (CoP) session for counsellors who are practising in academic settings.

On 25th June 2021, Mr Tony Leong, Director of Youth Work Campus Impact, shared on The Psychological Effects of Divorce on Children. The committee's hard work paid off as the team received positive feedback from the participants. The committee will continue to preserve and initiate more platforms like this, in its continuous efforts in the professional development of School and College Counsellors.



Reported By:

Bernard Mackenzie, on behalf of the School & College Counsellors Sub-Committee, SAC

Report of the Executive Committee 2021

SINGAPORE ASSOCIATION FOR COUNSELLING

RESEARCH & PUBLICATIONS STANDING COMMITTEE SUMMARY REPORT FOR 2021

Term:	Jan 2021 – Dec 2021
Co-Chairpersons:	<ul style="list-style-type: none"> ▪ A/Prof Frederick Low ▪ Dr Lee Boon Ooi
Board Members:	<ul style="list-style-type: none"> ▪ Dr Alicia Pon ▪ Dr Chan Pei See Joyce ▪ Dr Gilbert Fan ▪ Dr Kok Jin Kuan ▪ Dr Saravanakannan Ganapathi

In the year of 2021, the committee worked with authors and reviewers in the process of putting together a selection of articles for the inaugural issue of 'Counselling & Psychotherapy Review Singapore'. We are grateful to many, in academia and in practice, for coming forward to help with the peer-review process. The committee made progress in the selection of publishers – a proposal was subsequently made to the Executive Committee. I would like to thank my co-chairperson, Dr Lee Boon Ooi and colleagues on this committee, for all their efforts and hard work during this past year.

Reported By:

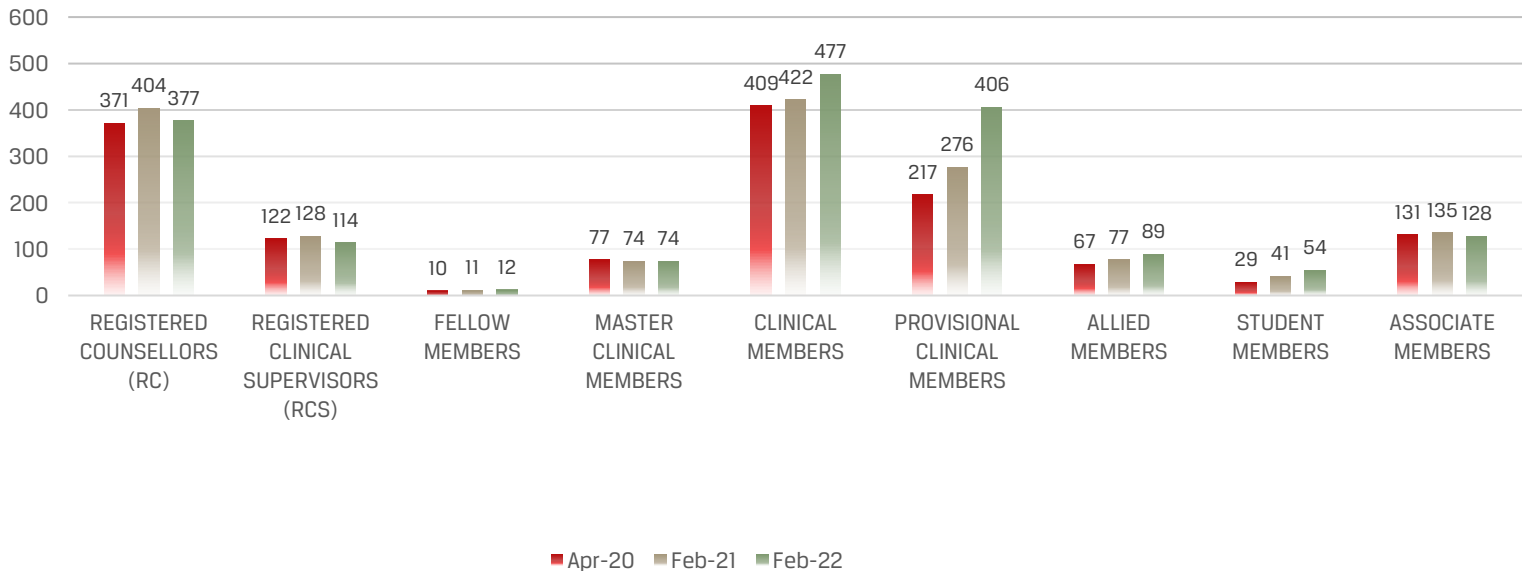
A/Prof Frederick Low, on behalf of the Research & Publications Standing Committee, SAC

Membership Strength as at 28th February 2022

Membership Categories		Apr 2020	Feb 2021	Feb 2022*
	No. of Registered Counsellors (RC)	371	404	377
	No. of Registered Clinical Supervisors (RCS)	122	128	114
Category A:	Fellow Member	10	11	12
Category B:	Master Clinical Member	77	74	74
Category C:	Clinical Member	409	422	477
Category D:	Provisional Clinical Member	202	217	406
Category E:	Allied Member	67	77	89
Category F:	Student Member	29	41	54
Category G:	Associate Member	131	135	128
TOTAL:		940	1036	1240

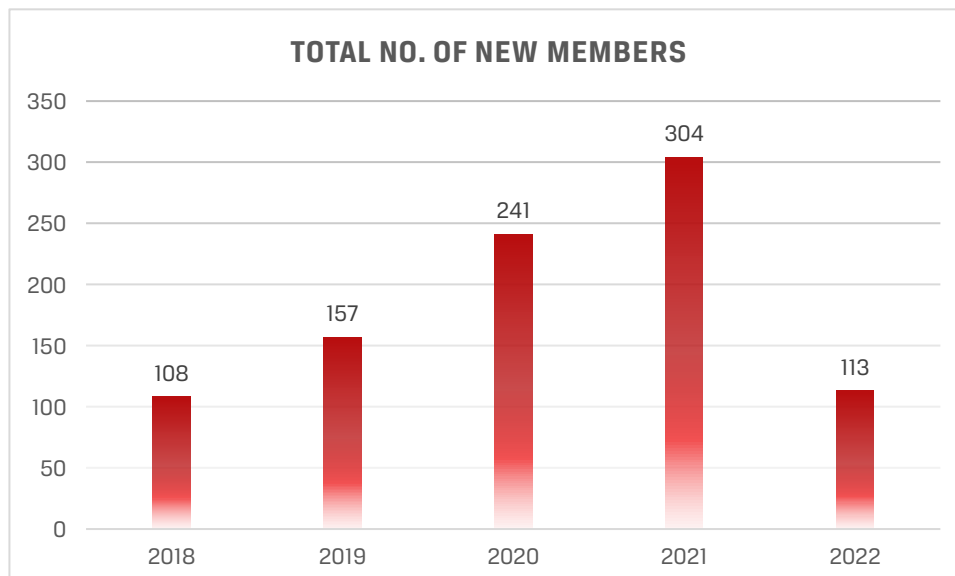
*as at 28 Feb 2022

BREAKDOWN OF MEMBERSHIP CATEGORIES



Total no. of <u>new</u> members	2018	2019	2020	2021	2022*
	108	157	241	304	113

*as at 28th Feb 2022



Financial Statements

SINGAPORE ASSOCIATION FOR COUNSELLING

(Co. Reg. No: S83SS0024D)

AUDITED FINANCIAL STATEMENTS FOR THE FINANCIAL YEAR ENDED 31 DECEMBER 2021

Financial Statements

SINGAPORE ASSOCIATION FOR COUNSELLING
S83SS0024D
General Information

Executive Committee Members

A/Prof Frederick Low	<i>President</i>
Mr Andy Lam	<i>Vice President</i>
Mr Ng Chong Chee Dan	<i>2nd Vice President</i>
Ms Au Hoi Ting	<i>Hon. Treasurer</i>
Ms Hema Gurnani	<i>Hon. Secretary</i>
Mrs Lim Cheng Ern, Lydia	<i>Asst. Hon. Treasurer</i>
Ms Xiao Li En	<i>Asst. Hon. Secretary</i>
Ms Carolyn Lim	<i>Member</i>
Dr Chan Pei See Joyce	<i>Member</i>
Ms Giam Xiuhui	<i>Member</i>
Dr Saravanakannan Ganapathi	<i>Member</i>

Registered Office

190 Clemenceau Avenue
 #06-01, Work Central Offices
 Singapore 239924

Index	Page
Statement of the Executive Committee	1
Report of the Auditor to the Members	2
Statement of Income and Expenditure	3
Statement of Financial Position	4
Statement of Changes in Accumulated Fund	5
Statement of Cash Flows	6
Notes to the Financial Statements	7 - 14

Financial Statements

SINGAPORE ASSOCIATION FOR COUNSELLING
S83SS0024D
STATEMENT OF THE EXECUTIVE COMMITTEE
FOR THE FINANCIAL YEAR ENDED 31 DECEMBER 2021

The Executive Committee is pleased to present their statement to the members together with the audited financial statements of Singapore Association For Counselling (the 'Association') for the financial year ended 31 December 2021.

1. Opinion of the Executive Committee

In the opinion of the Executive Committee,

- (a) the financial statements of the Association are drawn up so as to give a true and fair view of the financial position of the Association as at 31 December 2021 and the statement of income and expenditure, changes in accumulated fund and cashflows of the Association for the year then ended; and
- (b) at the date of this statement, there are reasonable grounds to believe that the Association will be able to pay its debts as and when they fall due.

2. Executive Committee

The Executive Committee of the Association in office at the date of this statement are:

A/Prof Frederick Low
 Mr Andy Lam
 Mr Ng Chong Chee Dan
 Ms Au Hoi Ting
 Ms Hema Gurnani
 Mrs Lim Cheng Ern, Lydia
 Ms Xiao Li En
 Ms Carolyn Lim
 Dr Chan Pei See Joyce
 Ms Giam Xiuhui
 Dr Saravanakannan Ganapathi

On behalf of the Executive Committee,



A/Prof Frederick Low
 President



Ms Au Hoi Ting
 Hon. Treasurer

Singapore
 4 March 2022

Financial Statements

SINGAPORE ASSOCIATION FOR COUNSELLING
S83SS0024D
STATEMENT OF THE EXECUTIVE COMMITTEE
FOR THE FINANCIAL YEAR ENDED 31 DECEMBER 2021

1. INTERNAL AUDITOR'S OPINION STATEMENT

I have examined the Balance Sheet of the Singapore Association for Counselling as of 31 December 2021 and the related statement of income and changes in accumulated fund for the year ended 31 December 2021.

My examination was made in accordance with my general knowledge of the accounts and accordingly included such tests of the accounting records as I considered necessary in the circumstances.

In my opinion, the accompanying accounts present fairly the financial position of the Singapore Association for Counselling as of 31 December 2021 and is the revenue collected and expenses paid for the said period.



Lai Lan

**Honorary

INTERNAL AUDITOR (without qualification)

Singapore
4 March 2022

** An objective examination and evaluation of the Singapore Association for Counselling to make sure that the financial records are a fair and accurate representation of the transactions claimed to represent.

Financial Statements

SINGAPORE ASSOCIATION FOR COUNSELLING
S83SS0024D
STATEMENT OF THE EXECUTIVE COMMITTEE
FOR THE FINANCIAL YEAR ENDED 31 DECEMBER 2021

	Notes	2021 S\$	2020 S\$
INCOME			
Membership subscriptions (incl RC & CS fees)		163,912	125,796
Course Recognition Fees		16,389	15,000
Advertising Income		18,001	10,135
Other Income		203	452
Members activities/projects	4	615	1,600
Total Trade Income		199,120	152,983
OTHER INCOME			
Interest Income	5	1,022	1,522
Government Grants		6,604	10,418
Total Income		206,746	164,923
EXPENDITURE			
Administrative support		-	-
Accounting fees		7,690	7,690
Bad debt expense		160	681
Bank charges		127	227
Computer expenses & software		-	400
CPF contribution		9,370	6,018
Depreciation		7,598	7,100
General expenses		424	387
Fines & penalties		-	112
Internet/website		10,019	11,385
Insurance		3,744	2,496
Meeting expenses - Exco & Subcomm		394	867
Meeting expenses - AGM		-	400
Plaques		209	
Office & equipment rental		7,223	6,861
Postage and courier		218	166
Printing and stationery		400	2,209
Refreshments		372	66
Reviewer fees for course recognition		600	6,600
Salaries		55,117	35,400
Skill development fund		121	82
Subscriptions		1,700	1,369
Telephone		318	862
Transportation		78	360
Total Expenditure		105,882	91,738
Net Surplus/(Deficit)		100,864	73,185
Income tax expense	6	8,602	4,447
Total Surplus/(Deficit) after tax		92,262	68,738

The accompanying accounting policies and explanatory information form an integral part of the financial statements.

SINGAPORE ASSOCIATION FOR COUNSELLING
S83SS0024D
STATEMENT OF THE EXECUTIVE COMMITTEE
FOR THE FINANCIAL YEAR ENDED 31 DECEMBER 2021

	Notes	2021 S\$	2020 S\$
ASSETS			
Fixed assets	7		
Computer Equipment		498	1,692
Less: Acc Dep on Computer Equipment		(498)	(1,692)
Systems & Software		21,300	21,300
Less: Acc Dep on Systems & Software		(21,300)	(14,200)
		-	7,100
Current assets			
Cash and cash equivalents	8	536,815	414,611
Trade receivables	9	6,631	2,384
Deposits		602	602
Prepayments		768	2,439
Other receivables	10	-	1,250
		544,816	421,286
Total assets		544,816	428,386
ACCUMULATED FUND AND LIABILITIES			
Accumulated fund		480,188	387,926
Current liabilities			
Income tax payables		14,254	5,653
Trade payables	11	-	3,689
Other payables	12	50,374	31,118
		64,628	40,460
Total accumulated fund and liabilities		544,816	428,386

The accompanying accounting policies and explanatory information form an integral part of the financial statements.

SINGAPORE ASSOCIATION FOR COUNSELLING
 S83SS0024D
 STATEMENT OF THE EXECUTIVE COMMITTEE
 FOR THE FINANCIAL YEAR ENDED 31 DECEMBER 2021

	2021 S\$	2020 S\$
	S\$	S\$
Balance at the start of the year	387,926	319,188
Surplus/(Deficit) for the period after taxation	92,262	68,738
Balance at the end of the year	480,188	387,926

The accompanying accounting policies and explanatory information form an integral part of the financial statements.

SINGAPORE ASSOCIATION FOR COUNSELLING
S83SS0024D
STATEMENT OF THE EXECUTIVE COMMITTEE
FOR THE FINANCIAL YEAR ENDED 31 DECEMBER 2021

	2021 S\$	2020 S\$
Cash flows from operating activities		
Profit before tax	100,864	73,185
Adjustment for:		
Dep of Property, plant and equipment under s19a	7,598	7,100
Operating profit before working capital changes	108,462	80,285
Changes in working capital :		
Trade receivables	(4,247)	(1,658)
Other receivables and prepayments	2,921	10,801
Trade and other payables	15,566	(26,595)
Cash generated from operations	122,702	62,833
Income tax paid	-	(6,506)
Net cash flows from operating activities	122,702	56,327
Cash flows from investing activities		
Acquisition of property, plant and equipment	(498)	-
Net cash flows used in investing activities	(498)	-
Cash flows from financing activities		
Net cash flows used in financing activities	-	-
Net increase in cash and cash equivalents	122,204	56,327
Cash and cash equivalents at beginning of financial year	414,611	358,284
Cash and cash equivalents at end of financial year	536,815	414,611

The accompanying accounting policies and explanatory information form an integral part of the financial statements.

SINGAPORE ASSOCIATION FOR COUNSELLING
S83SS0024D
STATEMENT OF THE EXECUTIVE COMMITTEE
FOR THE FINANCIAL YEAR ENDED 31 DECEMBER 2021

These information form an integral part and should be read in conjunction with the accompanying unaudited financial statements.

1 General

The Association (UEN. No. S83SS0024D) is registered in Singapore under the Societies Act, Cap 311 with its registered office and principal place of business at 190 Clemenceau Avenue #06-01, Work Central Offices Singapore 239924.

The Singapore Association for Counselling is a professional body representing the interests of counsellors and psychotherapists in Singapore, including generating knowledge sharing and establishing best practice standards, to generate continued growth of the profession to meet the interests of clients.

2. Summary of significant accounting policies

2.1 Basis of preparation

The financial statements of the Association have been drawn up in accordance with Singapore Financial Reporting Standards ("FRS"). The financial statements have been prepared on the historical cost basis except as disclosed in the accounting policies below.

The financial statements are presented in Singapore Dollars (S\$), which is the Association's functional currency.

2.2 Adoption of new and revised standards

The accounting policies adopted are consistent with those of the previous financial year except in the current financial year, the Association has adopted all the new and revised standard which are relevant to the Association and are effective for annual financial periods beginning on or after 31 December 2021. The adoption of these standards did not have any material effect on the financial statements.

2.3 Standards issued but not yet effective

A number of new standards, amendments to standards and interpretations are issued but effective for annual periods beginning after 31 December 2021, and have not been applied in preparing these financial statements. The Association does not plan to early adopt these standards.

SINGAPORE ASSOCIATION FOR COUNSELLING
S83SS0024D
STATEMENT OF THE EXECUTIVE COMMITTEE
FOR THE FINANCIAL YEAR ENDED 31 DECEMBER 2021

2. Summary of significant accounting policies (Continued)

2.3 Standards issued but not yet effective (Continued)

The following standards that have been issued but not yet effective are as follows:

Description	Effective for annual periods beginning on or after
Amendments to FRS 109 Financial Instruments, FRS 39 Financial Instruments: Recognition and Measurement, FRS 107 Financial Instruments: Disclosures, FRS 104 Insurance Contracts, FRS 116 Leases: Interest Rate Benchmark Reform- Phase 2	1 Jan 2021
Amendments to FRS 16 Property, Plant and Equipment: Proceeds before Intended Use	1 Jan 2022
Amendments to FRS 37 Provisions, Contingent Liabilities and Contingent Assets: Onerous Contracts – Cost of Fulfilling a Contract	1 Jan 2022
Annual Improvements to FRSs 2018-2020	1 Jan 2022
Amendments to FRS 1 Presentation of Financial Statements: Classification of Liabilities as Current or Non-current	1 Jan 2023
Amendments to FRS 110 Consolidated Financial Statements and FRS 28 Investments in Associates and Joint Ventures: Sale or Contribution of Assets between an Investor and its Associate or Joint Venture	Date to be determined

The Executive Committee accepts that the adoption of the standards above will have no material impact on the financial statements in the period of initial application.

2.4 Property, plant and equipment

All items of property, plant and equipment are initially recorded at cost. Subsequent to recognition, property, plant and equipment are measured at cost less accumulated depreciation and any accumulated impairment losses. The cost of property, plant and equipment includes its purchase price and any costs directly attributable to bringing the asset to the location and condition necessary for it to be capable of operating in the manner intended by management. Dismantlement, removal or restoration costs are included as part of the cost of property, plant and equipment if the obligation for dismantlement, removal or restoration is incurred as a consequence of acquiring or using the property, plant and equipment.

Depreciation is calculated using the straight-line method over their estimated useful lives. Depreciation is recognised from the date that the property, plant and equipment are installed and are ready for use, or in respect of internally constructed assets, from the date that the asset is completed and ready for use.

SINGAPORE ASSOCIATION FOR COUNSELLING
 S83SS0024D
 STATEMENT OF THE EXECUTIVE COMMITTEE
 FOR THE FINANCIAL YEAR ENDED 31 DECEMBER 2021

2. Summary of significant accounting policies (Continued)

2.4 Property, plant and equipment (Continued)

The estimated useful lives are as follows:

	<u>Useful lives</u>
Assets below S\$2,000	12 months
Assets above S\$2,000	36 months

2.5 Financial instruments

a) Financial assets

Initial recognition and measurement

Financial assets are recognised when, and only when, the Association becomes a party to the contractual provisions of the financial instrument. The Association determines the classification of its financial assets at initial recognition.

When financial assets are recognised initially, they are measured at fair value, plus, in the case of financial assets not at fair value through profit or loss, directly attributable transaction costs.

De-recognition

A financial asset is derecognised when the contractual right to receive cash flows from the asset has expired. On de-recognition of a financial asset in its entirety, the difference between the carrying amount and the sum of the consideration received and any cumulative gain or loss that has been recognised in other comprehensive income is recognised in profit or loss.

b) Financial liabilities

Initial recognition and measurement

Financial liabilities are recognised when, and only when, the Association becomes a party to the contractual provisions of the financial instrument. The Association determines the classification of its financial liabilities at initial recognition.

All financial liabilities are recognised initially at fair value plus in the case of financial liabilities not at fair value through profit or loss, directly attributable transaction costs.

**SINGAPORE ASSOCIATION FOR COUNSELLING
S83SS0024D
STATEMENT OF THE EXECUTIVE COMMITTEE
FOR THE FINANCIAL YEAR ENDED 31 DECEMBER 2021**

2. Summary of significant accounting policies (Continued)

2.5 Financial instruments (Continued)

b) Financial liabilities (Continued)

De-recognition

A financial liability is de-recognised when the obligation under the liability is discharged, cancelled or expires. When an existing financial liability is replaced by another from the same lender on substantially different terms, or the terms of an existing liability are substantially modified, such an exchange or modification is treated as a de-recognition of the original liability and the recognition of a new liability, and the difference in the respective carrying amounts is recognised in profit or loss.

2.6 Cash and cash equivalents

Cash and cash equivalents comprise cash at banks and on hand and are subject to an insignificant risk of changes in value.

2.7 Provisions

Provisions are recognised when the Company has a present obligation (legal or constructive) as a result of a past event, it is probable that an outflow of resources embodying economic benefits will be required to settle the obligation and the amount of the obligation can be estimated reliably.

2.8 Government grants

Government grants are recognised when the grant is received and all attaching conditions are complied with.

2.9 Employee benefits

a) Defined contribution plans

The Association makes contributions to the Central Provident Fund scheme in Singapore, a defined contribution pension scheme. Contributions to defined contribution pension schemes are recognised as an expense in the period in which the related service is performed.

b) Short-term employee benefits

Short-term employee benefit obligations are measured on an undiscounted basis and are expensed as the related service is provided. A liability is recognised for the amount expected to be paid if the Association has a present legal or constructive obligation to pay this amount as a result of past service provided by the employee, and the obligation can be estimated reliably.

SINGAPORE ASSOCIATION FOR COUNSELLING
S83SS0024D
STATEMENT OF THE EXECUTIVE COMMITTEE
FOR THE FINANCIAL YEAR ENDED 31 DECEMBER 2021

2. Summary of significant accounting policies (Continued)

2.10 Revenue recognition

Revenue is recognised to the extent that it is probable that the economic benefits will flow to the Company and the revenue can be reliably measured, regardless of when the payment is made. Revenue is measured at the fair value of consideration received or receivable, taking into account contractually defined terms of payment and excluding taxes or duty.

a) Rendering of services (Advertising & Course Recognition)

Revenue from rendering of services is recognised when the services have been confirmed or performed and rendered, and when there is transfer of significant risks and rewards of the services rendered to the customer. Revenue is not recognised to the extent where there are significant uncertainties regarding recovery of the consideration due, associated costs or the cancellation of services.

b) Membership subscriptions

Membership subscriptions are recognised upon the approval of membership subscriptions. Membership subscription fees are not recognised to the extent where there are significant uncertainties regarding recovery of the consideration due.

c) Member activities/projects

Income from member activities/projects are recognised at net of collections (if any), less direct expenses incurred on such activities/projects.

d) Interest income

Interest income is recognised on a time proportion basis using the effective interest method.

2.11 Taxes

a) Current income tax

Current income tax assets and liabilities for the current and prior periods are measured at the amount expected to be recovered from or paid to the taxation authority. The tax rates and tax laws used to compute the amount are those that are enacted or substantively enacted at the reporting date.

3. Significant accounting judgments and estimates

The management is of the opinion that there are no significant judgments made in applying accounting estimates and policies that have a significant risk of causing a material adjustment to the carrying amounts of assets and liabilities within the next financial year.

SINGAPORE ASSOCIATION FOR COUNSELLING
S83SS0024D
STATEMENT OF THE EXECUTIVE COMMITTEE
FOR THE FINANCIAL YEAR ENDED 31 DECEMBER 2021

4. Members' Activities/Projects

The net income/(deficit) from members' activities/projects were as follows:

Activities	Income S\$	Expenses S\$
2021		
Group Supervision Session	1,815	(1,200)
Net income/(deficit) from activities/projects		615
2020		
Group Supervision Session (via Zoom)	1,600	-
Net income/(deficit) from activities/projects		1,600

5. Interest Income

Interest income is earned from short-term fixed deposits placed with DBS and Maybank. The interest rate on these short-term fixed deposits range from 0.04%-0.05% (2020: 0.15%-2.0%) per annum.

6. Income tax expense

The major components of income tax expense recognised in profit or loss for the years ended 31 December 2021 and 2020 were:

	2021 S\$	2020 S\$
Current income tax		
- Current year	8,602	5,653
- Under/(over)provision in respect of prior years		(1,206)
	8,602	4,447

Relationship between tax expense and accounting profit

A reconciliation between tax expense and the accounting profit multiplied by the applicable corporate tax rate for the financial years ended 31 December 2021 and 2020 were as follows:

	2021 S\$	2020 S\$
Profit before tax	100,864	73,185
Income tax using the statutory tax rate of 17%	17,146	12,441
Tax effects of:		
Non-deductible expenses	1,292	1,226
Full/partial exemption of income	(9,452)	(6,502)
Non-taxable income	(384)	(1,512)
Under/(over)provision in respect of prior years	-	(1,206)
Income tax expense recognised in profit or loss	8,602	4,447

SINGAPORE ASSOCIATION FOR COUNSELLING
S83SS0024D
STATEMENT OF THE EXECUTIVE COMMITTEE
FOR THE FINANCIAL YEAR ENDED 31 DECEMBER 2021

7. Property, plant and equipment

	Computer Equipment S\$	Systems & Software S\$
Cost		
At 1 January 2021	1,692	21,300
Additions	498	-
Disposals	-	-
At 31 December 2021	2,190	21,300
Accumulated Depreciation		
At 1 January 2021	1,692	14,200
Depreciation	498	7,100
Disposals	-	-
At 31 December 2021	2,190	21,300
Carrying amount		
At 31 December 2021	-	-
At 31 December 2020	-	7,100

8. Cash and cash equivalents

	2021 S\$	2020 S\$
Cash at banks	536,815	167,810
Fixed deposits	-	246,801
	536,815	414,611

9. Trade receivables

	2021 S\$	2020 S\$
Trade receivables		
Third parties	1,125	200
Members	5,666	2,865
	6,791	3,065
Less: Allowance for expected credit losses	(160)	(681)
	6,631	2,384

Trade receivables are non-interest bearing and are generally on 30 days' terms.

SINGAPORE ASSOCIATION FOR COUNSELLING
S83SS0024D
STATEMENT OF THE EXECUTIVE COMMITTEE
FOR THE FINANCIAL YEAR ENDED 31 DECEMBER 2021

10. Other receivables	2021	2020
	S\$	S\$
Unbilled Course recognition renewal fees	-	1,250
11. Trade payables	2021	2020
	S\$	S\$
Trade payables to:		
Third parties	-	1,103
Members	-	2,586
	<u>-</u>	<u>3,689</u>

These amounts are non interest-bearing. Trade payables are normally settled on 30-60 days' terms.

12. Other payables	2021	2020
	S\$	S\$
Sundry creditors	8,280	3,902
CPF payable	3,133	2,233
Accrued expenses	490	490
Professional indemnity premium payable	19,902	14,285
Unearned course recognition fees	18,569	10,208
Unearned interest income	-	-
	<u>-</u>	<u>-</u>

13. Significant related party transactions

There were no related party transactions nor compensation made to any key management personnel during the current nor preceding year.

14. Financial risk management

The key financial risk is credit risk. The exco reviews and agrees on policies and procedures for the management of this risk, which are executed by the team.

Credit risk refers to the risk that the counterparty will default on its contractual obligations resulting in a loss to the Association. The Association's exposure to credit risk arises primarily from trade receivables.

The Association performs regular reviews of its aging trade receivables to manage its credit risk; any members who default on payments for more than 90 days are evaluated for recoverability and terminated if such defaults on payments persist.

Members Listing

as at 28th February 2022

FELLOW MEMBERS

D'rozario Vilma
Jim Bin Ismail Omar Bek
Khoo Molly
Kuna Sam
Nair Elizabeth Nee Chacko
Ng Tiat Khuan Jonathan
Ong Teck Hong
Syn Margaret
Tan Swee Yee Joyce
Thio-Ho Twa Moi Vicky
Toh-Chua Juliana Swee Lin
Yeoh Gueh Kwang

MASTER CLINICAL MEMBERS

Ang Teck Ee
Ang Ting Ting Sophia
Anna Maria Low
Bong Benny
Bung Theresa (Tan Lee)
Chan Lai Cheng Jessica
Chan Pei See Joyce
Chan Teck Yoong Theresa
Chen Xiao Ming Jean
Cheong Wah Loong Alvin
Cho Chia Min
Chua Wang Soon Ruth
Chung Yee Lin Ada
Diana Chandra
Goh Song Eng
Guee Chai Koong Andy
Gupta Suhrita (Rita)
Hema Gurnani
Ho Geok Choon Danny
Ho Kar Yue Benjamin
Ho Swee Min Laurence
Hogan, Debbie (Deborah Cannon Hogan)
Joseph John
Joshi s/o Chandrasenan
Kew Choi Foong Sutrisno
Koay Li May Michelle
Koh Ai Jin
Koh Ai Sim Linda
Koh Choo Choo Sharon (Mrs Sharon Sng)
Koh Hwee Lin Evelyn Rochelle
Kok Lee Fong
Kong Seet Mui
Lam Kee Soon Andy
Lau Hon Shin
Lee Boon Ooi
Lim Beng Khuan Christine

Lim Peng Ann Adrian
Lim-Choy Puay Wun
Lim-Teo Lek Mei Charlene
Loh Bee Chin Cindy
Loi Irene
Loke Keng Choong
Lo-Tan Li Ching Rebecca
Low Teck Keong
Lu Winny
Mack Wing Hung Wilson
Moong San Hwee Leonard
Ng Bee Eng Debbie
Ng Carolyn
Ng Chong Chee Dan
Nisha Rani d/o Rugnath
Ong Chooi Seng
Ong Kie Wee Tony
Ong Kwee Hiong Clare
Ow Yong Lai Meng
Pushpalatha Sheena Jebal
Quek Jwee Leng Edwin
Raj Nur Farha Qaiyishah @Sunita Devi
Ram Dubey Narain
Saradha Ramachandran
Shen Shuyliang Bryan Crucis
Sim Yih Shyang Andy
Tan Boon Huat
Tan Chin Yeow Augustine
Tan Kay San Wilson
Tan Li Lian Trina
Teo Lak Kwang William
Toh Hwee Boon
Virginia De Souza
Wong Mee Yin (May)
Yap Lay Khoon Doris
Yeo Kong Leong Alan
Yeo See See Lynette
Yoo Siew Foong Florence

CLINICAL MEMBERS

Agashe Madhura
Alicia Pon
Alicia Poon-Loke Foong Ping
Alpana Pal
Alvin Chong Fook Kiong
Ang Bee Lin Marlene
Ang Bin Hua Yvonne
Ang Kim San Norman
Anna Catherine Livingston
Arati Vidyadhar Mali
Au Hoi Ting

Au Kum Ying Jennifer
Azrin Bin Abdul Rahim
Bernard Mackenzie (Benz)
Bong Yioe Ling
Castro, Genevere Tolibas.
Celestine Chua Yun Na
Chai Chin Yaun Nancy
Chan Guat Choo
Chan Hong Khim Albina
Chan Jia Hui Candace
Chan Ka Po
Chan Lai Peng Victoria
Chan May Peng
Chan Peng Yew Raymond
Chan Quee Eng Carrie
Chan Sook Ying Jacqueline
Chan Tuck Chee Philip
Chan Wai Kuen Adelina
Chan Yim Peng Grace
Chan Yin Fun Rachel
Chang Cheng Ern Lydia (Lim C.E Lydia)
Chang Choy Ling Florence
Chang Xue Li Sherry
Charley Joyce
Chee Ai Lay
Chee Hsieh Mei Charmaine
Chee Sau Mui Fiona
Chen Boyu
Chen Pui Shan
Chen Sheau Ing
Chen Shiyun Charlotte
Chen Ya Shu Michelle
Cheng Chee Seng
Cheng Chi Yin Sylvia
Cheong Mun Kin
Cheong Mun Yee
Chew Geok Bee
Chew Hwee Min
Chew Jee Seng
Chew Yat Peng
Chia Hui Erl
Chia Kwok Ying
Chia Lay Lay Lily
Chia Lee Meng Pauline
Chia Puay Cher Joan
Chia Siew Lian Anita
Chia Wen Chien
Chiam Ling Ling
Chiang Siew Wei Francisca
Chieng Yee Chie Joycelyn
Chin Ga Li

Members Listing

As At 28th February 2022

Chin Hui Shin
 Chin Mew Yam Flora
 Chin Yoke Mun
 Chin Yong Ann Michael
 Ching Pui Fun
 Chiu Mei Mei Cassandra
 Chng Jun Hui Kayla
 Chng Sock Wah Paulina
 Chok Juin Hwa Karen
 Chong Evelyn
 Chong Kaiwei
 Chong Kum Wah Raymond
 Chong Lie San
 Chong-Tan Seok Hwa Vivien
 Choo Hua Long Joseph
 Choo Siew Noi
 Chooi Mei Sin
 Chou Shen Chi Deborah nee Lie
 Chow Oi Har
 Chua Gek Lin Germaine
 Chua Hock Leng Timothy
 Chua Kah Hwee
 Chua Li Ming Elaine
 Chua Yong Sheng
 Chung Ee-Lynn Rachel
 Cindy Kong Yi Hui
 Colin Michael Lincoln
 da Roza Andrew John
 Daniel Tan Fu-Ann
 Dasari Pushpavathie
 Deepika Naresh Jawharmal Mulchandani
 Deng Chee Kwong Jeremiah
 Devika d/o Kumarasamy
 Dominica Candy Chua Wenting
 Duraipandi Angeline Jayanthi
 Edmund Celine Vasantha
 Ee Cheng Lian Vivian
 Evans Patricia
 Fabiola Agustina Kansil
 Fadzilah Binte Abdul Rahman
 Fan Kam Tong Gilbert
 Fathima Shafeeka Bte Mohamed Faris
 Fernando Monica Christine
 Fiona Herbert
 Fiona Maher O'Sullivan
 Fong Yun Ling Ellen
 Foo Cirong (Fu Cirong)
 Foo Lai Lan Paula
 Foo Mui Leng
 Foo Soo Jen
 Foong Cheang Bong Whelan

Gan Sih Tar Michele
 Ganapathi Saravanakannan
 Giam Xiuhui
 Girija Padmanabhan Nambiar
 Go Kim Hong Monica
 Goh Bee Shan
 Goh Kee Chye Lawrence
 Goh Kui Hwa
 Goh Meibo Guilini Grace
 Goh Shan Shan Vivien
 Goh Siew Kim Wendy
 Goh Sue Chern Susan
 Goh Tian Seah Richard
 Goh Wei Shen
 Grace Cheah Lean Cheng
 Grace Phoon
 Guo Lih Jia
 Haji Agus Bln Abdullah
 Han Shuyu
 Hema D/O Sivanathan
 Heng Su-Yin Jacqueline
 Hiew Ying Min
 Ho Boon Chye Hilton
 Ho Kok Inn
 Ho Koon Lee Connie
 Ho Soo Yi Karen @ Mrs Karen Sng
 Ho Sum Tim Christina
 Ho Tze Yee
 Holmes, Claire Ruth
 Hong Joey
 Hsi Kay Tee Timothy
 Hsu Yuk Chor Peter
 Huang Meiqi Amy
 Hui Yoke Cheng (Von)
 Ip Lee Lee
 Jacqueline Toh Bee Hoon
 Jasmine Yeo Meiluan
 Jenny Lim Ai Lin
 Jewitt, Amanda Lea
 Joshua Koh Yong Sheng
 Julie Netanela Goldstein
 Kan See Mun
 Kang Chun Yong Dave
 Kathirayson Anita
 Kaushik Zara
 Kavitha d/o Manokaran
 Kelvyanne Teoh
 Kenneth Ng Zheng Aik
 Khong Ai Ling Marie
 Khong Wee Ling Cindy (Kang Weiling Cindy)
 Khoo Siew Bee

Khoo Siew Eng
 Khoo Siew Lynn Lynette
 Koh Ai Pei Alicia
 Koh Bee Hoon Belinda
 Koh Bee Ling Majorie
 Koh Chin Mei Diana
 Koh Hong Wue Jessica
 Koh Karmen Audrey
 Koh Lee Sian Agnes
 Koh Li Wei Dawn
 Koh Ling Ying Pamela
 Koh Mei Lien Candice
 Koh See Boey Wendy
 Koh Siew Yen Gary
 Koh Yoke Sim Grace
 Koh, Angela May Lin
 Kok Jin Kuan
 Kong Mun Yee Cynthia
 Kwan Poh Chue Jaclyn
 Kwek Ban Seng Leonard
 Kwok Wai Leng
 Lai Tien Chin Jacintha
 Lai Wan Ning
 Lam Choon Chaip Benedict
 Lam Wai Mun
 Lam Yoke Fong
 Lanny Santoso
 Lau Choe Keng Trudy
 Lau Mui Choo Wendy
 Lee Chung Yean Jeffrey
 Lee Ee Ling Jintana
 Lee Hong Leng Jonathan
 Lee Hui Lan Winnie
 Lee Meng Ai
 Lee Mui Cheng Clarissa
 Lee Pedjoe, Patrice Catherine
 Lee Pei-En Mylene
 Lee San San Suzanna
 Lee Shu Hui Pristin
 Lee Sock Kuan
 Lee Soo Pin Pauline Addison
 Lee Tai Loong Joachim
 Lee Tsui Ling
 Lee Yong Yeng Oileen
 Lee-Lek Siew Ling Yvonne
 Leong Geok Hiok Pauline
 Leong Kok Kuan Tony
 Leong Mun Leng Joana
 Leong Woo Ho Raymond
 Leow Hock Chuan John
 Lian Tai Yu Amanda

Members Listing

as at 28th February 2022

Liang Mei Lun Alice	Lum Wai Ling Patricia	Png Peck Cheong Robin
Liao Wenqin, Pamela	Luo Pin Xuan	Png Tiang Hsia Michelle
Liau Kien Fie Albert	Mariambee Binte Abdul Hamid	Poh Shee Yean
Liew Shuh Onn Desmond	Mary Neo	Pong Pao Ling Theresa
Liew Yen Hoong	Maryati M Dahim	Poon Oi Lin
Lim Ai Chia	Mellissa Letchmi d/o A. Krishnan	Preeti Pandit
Lim Bee Bee Carolyn	Mendis Mahesika Dilani	Quah Poh Hock Alex
Lim Bee Lian Judith	Michael Pillai	Raden Chitra Liyana binte Gatot Gunantoro
Lim Bee Yian Vivien	Miranda Ledesma	Radhika Haralalka
Lim Chee Ding Betty	Mittal Vinti	Rafeah Bte Buang
Lim Chiew Shan Wendy	Mohajer Mozhdeh	Rajagopal Mallighase Ivan Joseph
Lim Ching-Hwa Jadelyn	Mohammed Zullkarnain Bin Abdul Aziz	Ramachandran Shamini Ras
Lim Eng Chuan	Mok Hwee Bee Cecilia	Reena Dabas
Lim Fang Yan Jessica	Mok Nellie	Reena Goenka
Lim Gek Tin Donna	Moody Ian Andrew	Rena Sivadas
Lim Huay Keng Katherine	Muhammad Hafiz Bin Zainal Abidin	Ricart Yana Berenice
Lim Hui Khim	Mundae Aarti	Rokiah Binte Samsudin
Lim Hui Ling Sharon	Nah Kiat Yong	Rose Apphia Rujiab Faquir
Lim Hui Theng Grace	Nathan Vijay Melwani	Roy Angshuman
Lim Hui Yi Valerie	Neeta Kapoor	Ruth Manasseh
Lim Hui Zhi Charmaine	Neo Kah Yan Diana Ruth	Sabala Maslowska Beata Grazyna
Lim Lay Keow	Ng Ai Ling	Sam Suet Chian
Lim Li Zhen	Ng Da Xuan	Sano Hitomi
Lim Mei Imm Magdalene	Ng Eew Hwong Jaque	Sapna Mathews
Lim Meng Chin	Ng Hwi Meow Agnes	SB Viknesan
Lim Mou Nyee	Ng Poh Yaip Steven	Seah Lay Kian
Lim Mui Gek Jane	Ng Siang Kiat Vivienne	Seah Meng Hwa
Lim Poh Cheng Suzanna	Ng Siew Siew Jaslyn	Seow Kwee Yong
Lim Puay Eng	Ng Sook Wai Jaime	Shaikh Mohamed Reza bin Mohamed Bamasri
Lim Say Teck Richard	Ng Wei Xin	Shamini Nedumaran
Lim Teck Seng Ronald	Ng Yew Hoon Lina	Shanti Achanta
Lim Tze Chuang Dustin	Ngiam Kee Peng	Sheila Mukhtar Kaur
Lim Wan Cheng Cheryl	Nicole Anne Chew	Sheryl Anne Bathman
Lim Weng Kee Ivan	Noor Faridah A Rahim	Shin Hui Priscilla
Lim Zhi Xiang Benedict	Oh Wan Chyi Valerie	Sia Chong Hao
Lim Zhiyi Gymy	Ong Chai Cheong	Siew Chau Yeng
Lim-Tan Guay Neo Florence	Ong Chen Hock Charlie	Siew Chee Kit Jonathan
Lin Qingfei	Ong Chin Aik Kenny	Silvia Wetherell
Lin Yuin Cheng Debbie	Ong I. Warton	Sim Sian Kiong Elijah
Liu Jiancong	Ong Li Lian	Sim Siew Choo Mabel
Lo Hui Min Chrystella	Ong Mei Theng Tarin	Sng Ngiap Teck Jimmy
Loh Kooi Keng Joselyn	Ortiz Vida Banares	Sng Wee Kiang Wesley
Loh Li Nah	Padma Jairam	So Yin Nei Jeanie
Loo Florence Ruth	Pan Minen Elizabeth	Soh Chin Boon
Louis Halbert	Paradkar Vrushali Manoj	Soh Choon Lee
Louis, John Philip	Pathma Jothee Kesava Kumaran s/o Govindasamy	Soh Guan Heng Steven
Louis, Karen McDonald	Paula Beatrix Rusly	Soh Jun Da Shawn
Low Poi Kee Frederick	Paula Elizabeth Huggins	Soleman Margaret
Low Yiing Jia	Paweena Woothitha	Soliano Michelle Monica
Loy Caihao Jasper	Peter Shannon	Song Poh Poh Angeline
Lui Hah Wah Elena	Phua Tiong Eng	SooHoo Ming Yim

Members Listing

As At 28th February 2022

Sophian Kayat
 Srividhya Sridhar
 Stanley s/o Muthusamy
 Suganthi d/o C N Rajandran
 Sukhtankar Nandini Vijaykumar
 Sukumaran Nair Indu
 Sunita Rai
 Swain Sukalyani
 Szeto Yoke Kheng Geraldine
 Tan Chwee Peng Amy
 Tan Hong Kheng
 Tan Hui Hong Dawn
 Tan Jun Fa
 Tan Koon Chow Augustine
 Tan Lay Bee Naomi
 Tan Li Si Daphne
 Tan Lian Tuan Alana
 Tan Ming Chin
 Tan Mui Lee Doreen
 Tan Peck Hian
 Tan Rui Ping Benjamin
 Tan Siew Foong
 Tan Siew Siew Elysia Eileen
 Tan Siew Yin Christine
 Tan Soh Hiang
 Tan Sok Har Esther
 Tan Sok Ngim
 Tan Soo Yin
 Tan Soo Yuin
 Tan Soon Choon Henry
 Tan Teng Liang
 Tan Tzer
 Tan Wei Qi Michelle
 Tan Wei Teck Steven
 Tan Weng Hun Terence
 Tan Yen Ling Adeline
 Tan Yew Ngee Andre
 Tan Yih Sze
 Tan Yik Ching Andrina
 Tan Yueling
 Tan Yuyun
 Tang Ai Ching Christina
 Tang Sook Fong
 Tang Wai Harn
 Tang Weng Fung Prisilla
 Tan-Moh Yoke Lan Janice
 Tao Kexin
 Tay Aiga Yuka
 Tay Ee Leng Elaine
 Tay Jin Lu Jean
 Tay Meng Hock Sunny

Tay Siok Choo Margaret
 Tay Swee Aii Susan
 Tee Sim Chie
 Teo Swee Ling Lena
 Teo Wei Pin Edmund
 Teoh Tan Ping Angeline
 Tham Chee Kin Steven
 Tham Im May
 Tin Tina
 Toh Huat Peng Benjamin
 Toh Mui Choo Gena
 Toh Quee Yong Joanne
 Too Meng Chen Eleanor
 Too Seng Hong Daniel
 Vandana Khanna
 Vanita d/o Kaneson
 Vytialingam, Helena
 Wang Hui Min Regina
 Wang Le Feng Andrea
 Wang Yi Shing
 Wee Boon Choon
 Wee Sin Teck
 Wong Chai Ling Natalie
 Wong Chiew Mee Jane
 Wong Kok Chew
 Wong Liang Hong
 Wong Lian-Ya Katrina
 Wong Mei Toon
 Wong Mi Fung Doreen
 Wong Poh Hoon Jackie
 Wong Poh Ping
 Wong Soo Ping
 Wong Teck Boon Anthony
 Wong Weng Keong
 Wong Wun Chee
 Woo Choo Peng Matthew
 Woon Li Lin Shirley
 Woon Vivien nee Hon Fook Sin
 Wu Che Vun Steven
 Xiao Li En
 Xie Lixin
 Yap Chwee Pheng
 Yap Pei Sei Kayla
 Yap Xiu Fen Denise
 Yap Zheng Jie Joseph
 Yeap Hwee Ling Bettina
 Yee Boon Chen Jeanie
 Yee Foong Wah Eliza
 Yeo Chong Yuen
 Yeo Lai Soon Anthony
 Yeo Neng Sheng Dominic

Yeo Poh Choo Wendy
 Yeo Su Yin Eunice
 Yeung Chi Kei
 Yik Chow Meng
 Yoo Chin Guan Anson
 Yoong Min Yi Melissa
 Yuyu Kow Jia Qi

PROVISIONAL CLINICAL MEMBERS

Abdul Hakim bin Adzhari
 Abigail Catherine Yang Wenjie
 Aisha Sheheryar Rasul
 Alexandra Danielle Bohnen
 Alice Ho Shing Yng
 Alison Elizabeth De La Cour
 Allard Alexander Mueller
 Amanda Tan
 Amy Ching Lee Hoon
 Ana Maria Jeremiah
 Ang Keng Hoe James
 Ang Kian Chuan
 Ang Kok Poh Andy
 Ang Kok Siong Frederick
 Ang Poon Sek
 Ang Pui San Evina
 Annie Lim
 Anthea Chua
 Aparna Sanga
 Arzeen Ansar
 Athita Bua-in
 Audrey Ng Hui Sian
 Balaji, Subhashini
 Balasubramaniam s/o Garunaharan
 Beena Doshi
 Belinda Tan Saw Yin
 Benjamin Wong Yew Fai
 Bhaama Manmnan - Ramaswamy Iyer
 Bijamati Periyal Pareatumbie
 Bimali Iyanthi Kumari Pandithakoralage
 Bjoerg Bruunshoej Plougmand
 Bongard Simon John
 Carla Julian Wangsahardja
 Carmmen Lee Chew Hoong
 Cathy Martina Casey
 Cecilia Yee Ching Foong
 Cha Siew Yoong Reeco
 Chan Mei Fen
 Chan Wan Qing
 Chan Wen Jie
 Charlotte Madeleine Stiffell
 Charmaine Tang Sook Leng

Members Listing

As At 28th February 2022

Chen Jing
 Chen Lai Lin
 Chen Zi Ling Cheryl
 Cheng Eng Hui
 Cheng Mei Horng Samantha
 Cheng Mui Hong Mabel
 Cheong Lee Boon Jocelyn
 Chern Lye Chua Andrew
 Chew Jun Li Iona
 Chew Wye Mun Serene
 Chia Zhang Yuan, Nathanael
 Ching Lai Mui
 Ching Yang Wai
 Chng Yee Chuan Leon
 Choi Kin Meng
 Choi Yoke Mun Sandra
 Chong Kim Chai Sherine
 Choo Madeline
 Chriselda Rose Pereira
 Christina Khoo-Sim Kar Puay
 Christopher Rajappan James
 Chua Chiew Hoon Eileen
 Chua Geok Choo Doreen
 Chua Hui Ying
 Chua Joo Leng
 Chua Min Sian
 Chua Ming Hwee Solomon
 Chua Sai Huah
 Chua Shan Yuan Edwin
 Chua Wei Ming Joel
 Chua Wei Wei Calin
 Clarice Ng Shu Yi
 Clifton Tokoara
 Coney Kelly-Jo Louise
 Daniel Ong
 Debbyrina de Thomas
 Desouza Merle Dolores
 Dhillon Rubendev Singh
 Dodani Kirti Prakash
 Drabu Sukriti
 Du Mingqi
 Durga Devi Arivan
 Dyana Robbins
 Emily Faye Noble
 Eske Foerschner
 Fadilah binte Jasmani
 Fafat Priya Vijay
 Faith Felicitas Hogan
 Fathin Afifah Binte Mohamad Kambali
 Fernandez Cordelia Audrey
 Fontaine Avis Maria

Foo Wen Huee Adrian
 Foo Yin Din
 Foong Pooi Yin
 Giam Mun-Ye, Cheryl
 Gloria Tay Chui Lin
 Goh Boon Ping Adelene
 Goh Loh Nah Luona
 Goh Mui Wah
 Goh Swee Kim Aileen
 Goh Whye Kian Tonia
 Harris-Little Victoria Rachel
 Heiliczzer Allison
 Helen Yii Teck Geok
 Heng Cher Hoon
 Heng Sock Yeng (Jessie)
 Henny Prayogo
 Hernie Yanti Khames-Martin
 Ho Choi Yee Ivy
 Ho Kit Choy
 Ho Wai Hon Russell
 Ho Wan Yeng
 Hong Dou
 Hu Shifan
 Ian Ong
 Ie Yayah Farida
 Ingres
 Iris Or Siew Yong
 Irudayamary Joseph Maria Nathan
 Isobel Barclay
 Iyer Nalini Venkatachalam
 Jacinta Tan Poh Joo
 Jahabher Nachiya
 Jain Shruti
 James Chong
 Janna Paulina Lim Si Ling
 Jeana Wong Chiun Tsin
 Jeanette Houmayune
 Jennifer Chan Siew Po
 Jennifer Isabelle Ong Pei Ling
 Jenny Hiou Lan Sze
 Jhangiani Nisha
 Joanna Ashwinni Manasseh
 Joesaphine Shalene Khanisen
 Joey Chan Kai Li
 Jonathan Ian Ramchand
 Jonathan Lim Yuan Chuan
 Joseph Quek Jie Hui
 Joylynn Yeo Sok Ching
 Julene Tan Li-Peng
 Julia Soh Ying Li
 Juliana Poh Shi Min

Jyothi Kosaraju
 Kaas Line
 Kang Geok Sue Elisa
 Karthikeyan Manimekalai
 Katina Halkas
 Kenneth Kwa Wee Bin
 Kenneth Ng Wee Leng
 Kevin Dunk
 Khor Han Mei
 Koh Geok Liang, Esther
 Koh Hui-Min Joanna
 Koh Jo Lin Josandi
 Koh Kim Lian Wendy
 Koh Lay Nah
 Koh Perk Kee Peggy
 Koh Siew Lin Esther Meredith
 Kong Siew Lang Gloria
 Kristi Stewart Mackintosh
 Kyaw Wint Wah
 Lai Mei Chin
 Lee Hwee Ting Clara
 Lee I-Lin
 Lee Kim Gek Margaret
 Lee Martha
 Lee Mei Ying Marilyn
 Lee Mun Foong Timothy
 Lee Oi Wei
 Lee Su Choon
 Lee Teck Ming
 Lee Wan Ling Cheryl
 Lee Wan Ting Adeline
 Lee Wen Jun
 Lee Yen Ching
 Lee Ying Ying
 Lee Yong Ching
 Leong Yong Chen Ronald
 Lew Yean Chee Stephanie
 Lianne Tung Yu En
 Lily Faidi
 Lim Ai Leen
 Lim Alexis
 Lim Chiou Yuin
 Lim Dahlia
 Lim Jiayi
 Lim Ngee Hui Brenda
 Lim Poh Cheng
 Lim Shu Jing
 Lim Yen Ping Joyce
 Lim Yujun
 Lin Ting
 Lin Weilin

Members Listing

As At 28th February 2022

Lin Xiuxia
 Lin Zhiwei Bernard
 Linda Elisa Van Laer
 Lion Alexis, Meitian
 Liong Kilyn
 Liu I-Hsuan
 Liu Rong Wei Shaun
 Liu Siwan
 Liu Xing
 Loh Kar Heng
 Low Ai Lee
 Low Chooi Peng
 Low Junsheng Johnsen
 Low Siew Foong Janice
 Lydia Toh Jia Hua
 Mah Ee Ying Whitney
 Maniesha Priyajie Blakey
 Manimuthu Mary
 Manoharan G Karthigasu
 Maria Milagros Syjuco
 Martin Tudor Ellis Williams
 Masayu binte Hairoman
 Mazlina Binte Salim
 Mendoza Lorita Ramirez
 Mohamed Ismail Bin Abu Bakar
 Mok Ham-Lock Jeanette
 Mok Zhiqiang Gary
 Monika Narayanan
 Morten Jensen
 Muhamad Haikel Bin Mohamed
 Naaz Fathima
 Nagoor Mohideen Fatimah d/o Abdul Gani
 Nasrin Shah Beevi
 Navroop Sood
 Nazira Begum Binte Rowthagani
 Nelly Darmali
 Neo Hui Min Melissa
 Neo Kim Chwee Stanley
 Ng Chai Hoon Elsie
 Ng Gim Hon
 Ng Hui Juan
 Ng Min Hong
 Ng Tio Wee Jason
 Nguyen Thi Gia Hoang
 Niederberger Danae Allen
 Nigel Mckenzie Edwards
 Nigel Tan
 Niti Gupta
 Nonis Macneu Martin
 Nooraini Binte Salleh
 Nooryanti - Yan Yahya

Nur Hafizah binte Zulkeplee
 Oh Boon Tai
 Oh Odelia Utama
 Ong Ai Lin Irene
 Ong Beng How Steven
 Ong Eng Hoon
 Ong Hock Lam Johnny
 Ong Kian Ming Clement
 Ong Kok Wah
 Ong Mui Hwa
 Ong San San
 Ong Siew Lan Jenny
 Ong Tze-Wei George
 Pang Siew Yun
 Pankuri Goel
 Park Seong-Yoo Christina
 Pashley James David Buxton
 Peh Boon Li Janice
 Phua Shi Ting
 Poh Lian Choo
 Poon Swee Har Tricia
 Pow Yih Ling
 Pragati Pritmani
 Quan Yen Li Valerie
 Quay Hong Mui Peggy
 Quek Hui Bing
 Quek Hui Lin Fiona
 Quek Hwee Kian Lilian
 Quek Wan Ting
 Rana Henu
 Rashmi Kunzru
 Ree Colin Gerard
 Rejini Boss
 Rekha Pinkesh Nahar
 Roberts Sam
 Rodney Tay
 Roxanne Yeo
 Ruth Komathi d/o Thaya Needi
 Ruwani Anita Bartholomeusz
 Ryan Julie Dianne
 S Manjushree
 S. Raveendran
 Sahgal Chitra R
 Sanchia Paquita Hunt-Towle
 Sarvesh Melvin
 Seah Chiew Kwan
 Seet Pek Har Belinda
 Seet Pek Hua Maria Babara
 Sekhon Berna Esendemir
 Seng Hkawn Susan
 Seow En Hui Amadea

Seow Si Min (Xiao Simin)
 Seunghee Chung
 Shah Kavita
 Shalini Chandola
 Sharinder Kaur
 Shila d/o Sarveiswerer Naidu
 Shriya Vashisht
 Sim Boon Wei
 Sim Shiang Hann Andy
 Simon Parkin
 Sin Chei Liang
 Singh Gayatri
 Singh Laxhman
 Siti Haslinda Binte Badul Karim
 Siti Salmi binte Mubari
 Soenaryo Yulia
 Sofya Al-haq Xia Jiamei
 Sona Pranav Kumar
 Song Pic Yoke Peggy
 Sonia Rebekah Louis
 Soo Kah Yeng Cindy
 Soon Kiang Hong David
 Spalvieri Laura
 Sripriya Subramanian
 Stephen Patrick Soloman
 Suganthi d/o Balakrishnan
 Suraya Binti Ali
 Suriyavarman Jagadis
 Svetlana Frolova
 Swamynathan Jananee
 Swee Fong Kheng Joan
 Tai Siew Ngee
 Tai Yoke Yin
 Tan Bee Wah
 Tan Chue Loon Michelle
 Tan Eng Choon
 Tan Eng Khim
 Tan Han Chung
 Tan Hui Chin
 Tan Hwee Peng Derance
 Tan Jeanne Kirk
 Tan Keng Yan
 Tan Kia Mui Florence
 Tan Nyuk Choon Flora
 Tan Sheng Guo Jackson
 Tan Sook Khuan Helenna
 Tan Teck Koon
 Tan Yam Mei Sandra
 Tan Yi Shan
 Tan Youyi Alvin
 Tang May Sei Margaret

Members Listing

as at 28th February 2022

Tan-Lim Hung Leong Kelvin Titan
 Tara Michelle Dear
 Tay Aik Keong Winston
 Tay Siew Hua
 Tay Sock Kheng
 Tay Swee Hong
 Tay Yok Bee Madelin
 Tee Hui Xin Carolyn
 Teo Zi Rong Donavan
 Thong Bai Hui Denise
 Tiong Cai Joo Karen
 Toh Hong Hwee
 Toh Irene
 Toh Mui Hua Catherine
 Toh Yue Lai Grace
 Tong Mien Yik
 Trueman Victoria Louise Sutherland
 Tsuruoka Yuri
 Tui Gwendolyn
 Vaishnavi Honnavalli
 Vanessa Burton
 Venner Marc Alexander
 Veronica Mok
 Veronica Tang Sok Siah
 Vicnesh Nicholas T Rajan Victor
 Vivien Tay Lih Yan
 Wan Junmei
 Wang Shiow Mei
 Wang Suwen
 Winnie Goh
 Wong Chooi Ling
 Wong Wai Mun
 Wong Yeng Yi
 Wong Yeong Tay Derrick
 Wong Zhi Xin, Charlene
 Woon Chin Ting
 Yan Lin Heng (Wang Yanling)
 Yang Hanning Charlene
 Yap Huay Khem
 Yap Kian Hong Amos
 Yap Mei Mei
 Yap Siew Ling
 Yee Ling Chow
 Yeo Chak Eng Hazel
 Yeo Chee Keong
 Yeo Hui Ying Jaime
 Yeo Kia Kia
 Yeo Tze-Wi Calvin
 Yeoh Oon Bee
 Yeoh Phay Yee
 Yew Swee Lian Lenca

Yip Wing See
 Yip Yick Mo Crystal
 Yolande Ferguson
 Yong Lai Cheng
 Yuen Chin @ Ou-Yang Chin
 Zahira bte Masauood Ahmad
 Zheng Kaiyun

ALLIED MEMBERS

Aarthi Subash Nair
 Abdul Halim Bin Muhamat Yusof
 Alison Moore
 Ang Jia Yi
 Angeline Kin
 Arul Anand Eric Lucio Erucio Das s/o A Sudha Ann Nancy
 Azlilah Jaffar
 Belen, Joan Alaine Casuncad
 Chai Bin Hua
 Chan Chee Keong
 Chan Hao Hua
 Cheong Kuan Yee
 Cheong Ming Han Edmund
 Chew Cai Ying Stephanie
 Chiang Ming Cherng
 Choo Nelson
 Chow Kit Seen
 Clarice Chey Pei Jun
 Darshini M Sambanthan
 Desouza Karl Francis
 Diviyaah d/o Balakrishnan
 Evelina Ong Yi Qing
 Fong Yow Foong
 Gayatri Saikia
 Goh Kiat Foong
 Haas Sarah
 Haier Diana Bte Hashim
 Hong Wai Leng Michelle
 Jagadharan Vickineswarie
 Jordan Paterson
 Jose Ferreira Filho
 Koch Emanuela
 Kudari Isaiah Timothy
 Lam Wee Woon
 Lam Yuet Meng Rachel
 Lau Yen Li Yvette
 Lee Hong Yiap
 Lee Kok Meng David
 Lee Pheng Hua Ray
 Lee Yong Siang Abigail
 Lee Zi Hao
 Lim Kai Kok Zeb

Lim Ming Chu Sharon
 Lim Yan Chern Gretchen
 Liow Hwee Hsiang
 Long Shi Yun
 Lui Jean Zhen Yi
 Mohamed Sulaiman Haja Navaz
 Moroni Claudio
 Muhammad Arif Bin Osman
 Ng Chern Chern Diana
 Ng Yee Peng Yolanda
 Ng Zi Hui Zanthé
 Noraliza Bte Abdul Rahim
 Nurleen binte Mohamed
 Oh Chee Siong
 Oh Chui Har
 Ong Lee Lian Wang Lilian
 Ong Wei Chong
 Pallot Bush Joanna Margaret
 Phua Hwee Chay Derrick
 Pooja Banerjee
 Poon Soo Yiang Amy
 Punithavathi d/o Elengovan
 Quek Yong Wee
 Renee Butler
 Scully Debra Theresa
 Selvan Sureintheramoorthi
 Shahrul Bahriyah bte Rhazaly Noentil
 Sharon Teo
 Sio Wee Syn Elvis
 Song Yanda James
 Stella Tan
 Su Yunting
 Tan Chee Shien
 Tan May Fung
 Tan Wai Heng
 Tan Yi Ling Berlinda
 Tan Yong Hao Andy
 Tang Chow Kheng
 Teo Kiok Seng
 Tong Hui Wen
 Treena Tan
 Vedanta Attri
 Verghese Shoba
 Xu Hai Yan
 Yap Ching Keong
 Yeo Ke Xin
 Yeoh Lai Lin

ASSOCIATE MEMBERS

Abigail Vicky Goh
 Adriana Giotta

Members Listing

as at 28th February 2022

Andriesz Sabreena
 Ang Hwee Yang
 Athavan Shanmugam
 Atika Shukla
 Boey Weng Fatt
 Carter, Margaret
 Chan Suet Fong
 Chee Kim Li Lily
 Chee Xiang Yun
 Chia Lai Ping Jane
 Chien Chiew Piang Willie
 Chua Hwee Cheng (Cai Huiqing)
 Chue Luen Song
 Desieree Elisabeth Makalew
 Eemin Loh
 Faessler-Moro Tanja
 Fang Aiying Amy
 Fong Kim Yen
 Foo Mei Fang Grace
 Francis Carmen
 Goh Chong Siang Richard
 Goh Chye Hong Wendy
 Goh Jing Yao
 Goh Siew Khim @ Dr Khim Goh
 Goh Yiling Eiling
 Goyal Ruchi
 Grimes, Odette
 Heng Siow Ing
 Ho Fook Cheong Vincent
 Hsu Su-Fen
 Ip Chi Keung John
 Jaikumar
 Jayakumar Rajamanickam Shatish
 Jeyapaul, Ponniah Andrew
 Kalai Selvan Priyanitha
 Kalavathi, Ramdass
 Kan Sze Han Kelly
 Kaur, Harbinder
 Kaur, Lakhvinder
 Kaushikee Ghose
 Khare, Mala C.
 Koh Bee Ping
 Koh Liang Kwan Daniel
 Koh Siew Eng
 Kumar Gurpaljeet Singh
 Lala Gwen Thomas
 Laura Wee May Ying
 Lee Chee Tong
 Lee Choon Eng Irene
 Lee Gek Hoon June
 Lee Mui Pink

Lee Seow Ping April
 Lee Yih Chih Samantha
 Lee Yong Kang Isaac
 Leong Wai Yarn Claire
 Liberty Margate
 Liew Lee Kien
 Lim Walter
 Ling Swee Leon Adrian
 Lo Mun Yue
 Loei Lee Kok Job
 Long Ivon
 Looi Li Keng
 Low Bee Hoon Emily
 Lui Sieu Yeng Anne Marie
 Lui Yook Wai
 Marina Salmond
 Michael Gomez
 Mohamed Harith Bin Mohamed Kassim
 Monisha Manohar
 Mrunmayee Milind Garole
 Naina Bhatia
 Nathan Hautea Parreno
 Neale
 Neo Ee Shiang Eleanor
 Neo Teck Koon Simon
 Ng Kim Bee
 Ng Wei-Cher Glen
 Ngien Tai Huen Diana
 Ong Fen Fen Melissa
 Overee Josephine Juliana
 Padgen Natalia Rachel
 Pal, Uma
 Patterson Antoinette Renee
 Poh Ling Yin Cyndi
 Poulier, Ian Hilary
 Quek Swee Hee
 R. Alamelu
 Rajoo Suseela
 Retief, Jenny
 Sambasivam, Selvathi
 Samira Shahul Hameed
 Sangeetha Jose
 Santhana-Francis Margaret M.
 See Kok Fuen Veronica
 See Siang Hua
 Seow Kok Piat
 Shah, Devanshi Dhimant
 Sharon Tan Hodiny
 Sim Peng Yam Kenneth
 Siow Thutt Menn Michael
 Sivarajasingam Mahendran

Sng Gin Ai Magdalene
 Soong Cecilia
 Stephanie Goh Swee Moi
 Su Fay May
 Tan Boon Chye
 Tan Chew Eng
 Tan Hui Ping
 Tan Meow Lan Joyce
 Tan Paul
 Tan Yak Koon
 Teng Lee Tat
 Teng YaoGuang
 Thevathasan, Troy Jack
 Thng Wei Kuen
 Tok Mui Peng Alice
 Tung Foong Yee Derry
 Vanderstraaten Maria
 Vanessa Hellewell
 Venkataraman Sasi Rekha
 Versolato Rebecca Simonis Barreto
 Vincent Wong
 Wong Yoke Ling Alice
 Wu Yu Ning
 Yap Wei Li

STUDENT MEMBERS

Anna Wihtol
 Anna-Murie Doyle
 Anusha Balasingham
 Balkees d/o Abdul Jabbar Maricar
 Belinda Cabanes
 Bethany Xien Wen Chuah
 Cheng Wei
 Chin Chuan Fei
 Ching Cheok Hui Nicodemus
 Combin Percy Khambatta
 Ether Kum Yu Ling
 Foo Jock Leng Emily
 Foong Zi En Nathaniel
 Gan Jeslin Jie Ling
 Hardy Sheyla
 Heng Yik Kun
 Hina Kazi
 Ho Shuen
 Jasmine Lam Xin Hui
 Jayachitra d/o Balasingam
 Karan Gurnani
 Keerthana Mohan
 Koh Beng Hong
 Laug Eric Jae
 Law Audrey

Members Listing

as at 28th February 2022

Lee Huiyi
Lee Sing Ye Elysia
Lim Hwee San
Lin Jing
Lisa Mary Oake
Loh Cherie
Mohammed Nazim Bin Rahuma Dulla
Ng Suan Chiew
Ong Si Min Stella
Ong Soh Chin
Ow Kok Kiat (Ou Guojie)
Qi Zhai
Quek Siau Leng (Aaron)
Rachel Chan Wen Yeu
Robertson, Roselyn, Rebecca
Sarann Johnson
Subashini Dayalan
Tan Leng Yen Jaclyn
Tan Pauline
Tan Teck Loong
Tatianna Nasr
Tay Hsing-Li Sharon
Tsolova-Nigoghossian Violeta Asenova
Vannie Wu Weiqi
Wang Youqing Tulip
Willie Soh
Yang Zijun Wynne
Ye Chen
Zhao Jie

Contact Information

Registered Office:

Singapore Association for Counselling
c/o Work Central Offices Pte Ltd
190 Clemenceau Avenue
#06-01 Singapore Shopping Centre
Singapore 239924

Tel: +65 6708 8292 | **Email:** admin@sacsingapore.org

Website: www.sacsingapore.org

UEN No.: S83SS0024D

Email Contacts:

A/Prof Frederick Low	President	president@sacsingapore.org
Ms Hema Gurnani	Honorary Secretary	secretary@sacsingapore.org
Ms Sandra Lim	Assistant Manager & Secretariat	admin@sacsingapore.org
Ms Janice Choo	Senior Executive	janice@sacsingapore.org
Ms Sarah Phua	Finance	finance@sacsingapore.org

SAC BOARDS AND SUB-COMMITTEES

CLINICAL SUPERVISION BOARD

Chairperson: Dr Jessica Leong (2020/21)
Mr Joachim Lee, PBM (2021/22)

Members: Mrs Linda Wan-Koh
Ms Livingston Anna Catherine
Rev Sam Kuna
Mr SB Viknesan
Mrs Sharon Sng

REGISTER OF COUNSELLORS BOARD

Chairperson: Ms Jenny Giam

Members: Ms Denise Yap
Ms Hema Gurnani
Mr Ng Chong Chee Dan
Ms Reena Goenka
Ms Rose Apphia Rujiab Faquir
Ms Yuyu Kow
Ms Malar Palaiyan (MOE)
Ms Nancy Ng (MSF)

RESEARCH & PUBLICATION STANDING COMMITTEE

Co-Chairperson: A/Prof Frederick Low

Co-Chairperson: Dr Lee Boon Ooi

Members: Dr Alicia Pon
Dr Chan Pei See Joyce
Dr Gilbert Fan
Dr Kok Jin Kuan
Dr Saravanakannan Ganapathi

COUNSELLORS EDUCATION BOARD

Chairperson: Ms Trina Tan (2020/21)
Mr Andy Lam (2021/22)

Members: Ms Au Hoi Ting
Ms Carolyn Lim
Ms Hema Gurnani
Ms Irene Loi
Dr Saravanakannan Ganapathi
Ms Agnes Chia (SASW)

COMMUNITY COUNSELLORS SUB-COMMITTEE

Chairperson: Mr Joachim Lee, PBM

Co-Chairperson: Ms Dawn Tan Hui Hong

Members: Mr Edwin Quek
Ms Michele Gan
Ms Sapna Mathews
Ms Sukumaran Nair Indu

SCHOOL & COLLEGE COUNSELLORS SUB-COMMITTEE

Chairperson: Mr Bernard Mackenzie

Members: Mr Donavan Teo

Ms Esendemir Sekhon Berna
Mr Joshi s/o Chandrasenan
Mr Jeffrey Lee
Mr Mohammed Zulkarnain Bin Abdul Aziz
Ms Shamini Ras Ramachandran
Ms Xiao Li En

ETHICS BOARD

Chairperson: Rev Sam Kuna

Members: Mr Andy Lam
Mr Benny Bong
Ms Mittal Vinti
Ms Sophia Ang
Mr Steven Tham
Mrs Toh- Chua Juliana Swee Lin
Dr Muni Winslow (Psychiatrist)
Mr Robin Lim (Lawyer)

MEMBERSHIP SUB-COMMITTEE

Chairperson: Ms Carolyn Lim

Co-Chairperson: Ms Au Hoi Ting

Members: Ms Amy Fang
Ms Celine Edmund
Ms Cindy Loh
Ms Tan Sook Khuan Helenna
Ms Rose Apphia Rujiab Faquir
Mr Sam Roberts
Ms Vinti Mittal
Ms Xiao Li En

This page has been intentionally left blank

This page has been intentionally left blank



**Singapore
Association for
Counselling**

FOR COUNSELLING
AND PSYCHOTHERAPY

This annual report is published by Singapore Association for Counselling for distribution to its members

Registered Office:

Singapore Association for Counselling
c/o Work Central Offices Pte Ltd
190 Clemenceau Avenue
#06-01 Singapore Shopping Centre
Singapore 239924

Tel: +65 6708 8292 | **Email:** admin@sacsingapore.org

Website: www.sacsingapore.org

UEN No.: S83SS0024D